

*bejon*

*ni yer space*

*st ninians*

*wakefield*

*nantwich*

*everyman*

*family*



*Feailley-Caisht  
ny Clóieghyn*


*22nd - 28th  
Mayrnt 2008*


# hats off to a great performance



At Bradford & Bingley International we pride ourselves in offering consistent and competitive interest rates combined with a quick, accurate and personal service to all our customers.

Our speciality is providing Sterling, Dollar and Euro savings products to the Expatriate, International and Manx communities. So it's no wonder we're one of the leading offshore deposit takers.

 30 Ridgeway Street, Douglas

 695000

 [enquiries@bbi.co.im](mailto:enquiries@bbi.co.im)

[www.bbi.co.im](http://www.bbi.co.im)

Bradford & Bingley<sup>®</sup>  
International

Licensed by the Isle of Man Financial Supervision Commission to conduct Banking Business.

# heritage homes



## Apartment living Island wide

### Spectrum Apartments, Douglas

All apartments with allocated parking

Studio apartments from £112,500

One bedroom apartments from £149,500

Two bedroom apartments from £189,950

### Empress Apartments, Douglas

Only two remaining both with allocated parking

One bedroom apartment - £214,950

Two bedroom apartment - £239,950

### Queens Pier Apartments, Ramsey

Two bedroom apartment with parking - £189,950

### Castle Court - Castletown

All apartments with allocated parking

One bedroom apartment - £161,950

One bedroom with study - £188,950

Two bedroom apartment - £227,500

## built to lift your dreams . . .

### Heritage Homes

Sales & Marketing Suite

22 - 24 Victoria Street, Douglas

Tel: 615000

Email: [salesoffice@dandara.com](mailto:salesoffice@dandara.com)

[www.dandara.com](http://www.dandara.com)



Prices correct at time of going to press



# Feailley~Caisht ny Cloieghyn

## Easter Festival of Full Length Plays 2008

Saturday, 22nd March	'The Caretaker' by Harold Pinter Bejou Productions, Westcliff-on-Sea, Essex.
Sunday, 23rd March	'Be My Baby' by Amanda Whittington In Yer Space, Blackpool
Monday, 24th March	'Visiting Hour' by Richard Harris St. Ninian's Players, Newton Meards, Scotland.
Tuesday, 25th March	'Brassed Off' by Paul Allen Wakefield Little Theatre, Wakefield.
Wednesday, 26th March	'Separate Tables' by Terence Rattigan Nantwich Players, Middlewich, Cheshire.
Thursday, 27th March	'Juno and the Paycock' by Sean O'Casey Everyman Productions, Sligo, Eire.
Friday, 28th March	'One Big Blow' by John Burrows Romiley Little Theatre, Manchester.

# Ny Aundyryn

## The Awards

Final Adjudication and presentation of the Awards will take place after the play on Friday, 28th March.

The Awards will be presented by His Excellency the Lieutenant Governor  
Vice Admiral Sir Paul Haddacks KCB

The F.M. Cubbon Trophy - Best Play

The Dick Craine Cup - First Runner Up

The Jack Lynch Cup - Second Runner Up

**The Vanda Lambert Award** Best Female Performance (Memento Donated by Jean Webb)

**The Edward S. Benn Award** Best Male Performance (Memento Donated by Mark Cill)

**The June Edge Cup** Most Promising Performance under 21

**The Mollie Corkill Award** Best Female Performance in a Supporting Role

**The David Kennaugh Award** Best Male Performance in a Supporting Role

**The Olga Gray Adjudicator's Award** Outstanding Contribution

**The John Bryan Award** For Audience Appreciation

**The Michael J. Lees Award** For Drama (Donated to mark Golden Jubilee Festival Year)

**The Richard Harris Memorial Trophy** For Ensemble Acting (Donated by Group Theatre, London)

**The Jackie Banner Award** For Comedy

**The J & B Green Award** For Costume and Make - up

**The Raven Players Award** Best Producer / Director

**The Frances Isaac Award** Best Performance over the age of 60

We are grateful to the Olga Cowell Bequest Fund  
which provides the mementos presented to each participating team.



## Y Taighyranne Ain Our President



John Blowing, President MADF

Good evening ladies and gentlemen and a hearty welcome to the 2008 Easter Festival of Plays. Although Easter falls exceptionally early this year, we trust that the warmth of our welcome will more than make up for any shortcomings of the early spring weather!

We welcome back as our adjudicator, Paul Fowler, GODA, who has previously adjudicated our Easter festival. We hope he enjoys adjudicating once again in our historic Gaiety Theatre.

To our visiting teams, whether old friends or new, we say a big thank you: first for making the

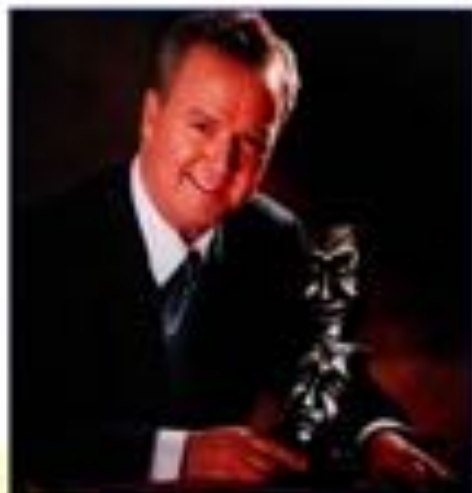
major commitment to travel to the Isle of Man and secondly for entering challenging and interesting plays. This enables us, the organisers, to present a varied and entertaining programme.

Finally to you, the audience, we thank you for your support of amateur theatre. Some of you have been coming to the Festival for many years, others are newcomers. I hope that many of you, if you have enjoyed the week, will take that extra step and become Friends of the Festival. You will find you will be joining a friendly and enthusiastic band of theatre supporters.

This year you will have the added benefit of an extra festival - the NDFA All-Winners Festival at the end of July, which promises to be another exciting occasion.

I wish you all an enjoyable week and look forward to meeting many of you at the theatre or afterwards at the Festival Club.

## Y Caairfiagh Ain Our Chairman



Michael J. Lees, Chairman MADF  
Chairman NDFA

It gives me much pleasure to welcome you all to our 57th Festival of Plays. This Easter we see a different mixture of teams and plays. Some of our stalwarts, Tudor Players, Martello and Sedgefield, were unable to secure diary dates to attend this year. Following our usual tradition, we have two teams who have not been to our island before, Nantwich Players and Romley Little Theatre and we especially welcome them and hope they enjoy the special magic that the 'Gaiety' experience brings. It is also lovely to welcome back Everyman Productions from Sligo who last visited us in 2004.

I especially welcome back our Adjudicator Paul Fowler GoDA, who was last here in 2003.

I have continued in my role as National Chairman of the National Drama Festivals Association (NDFA), part of the work being to improve festivals and offer support throughout the British Isles.

I was particularly pleased to be invited last October to be the lay person on a panel of three adjudicators who were examining candidates who wished to be considered as potential adjudicators. This was a two day course which I found fascinating and such an insight into what makes an adjudicator.

I am very proud that the 35th British All Winners Festival will take place at the Gaiety from the 19th - 25th July and should be a highlight of our three year planning. Our MADF Treasurer Aalin Cunningham was elected to our Council as Treasurer in July 2007 and I am delighted to have her very capable support.

The Young Actor of Mann competition continues to thrive and I am grateful to Judy Arnold of Travel Services and David Creane of Cowley Groves for their sponsorship in 2008.

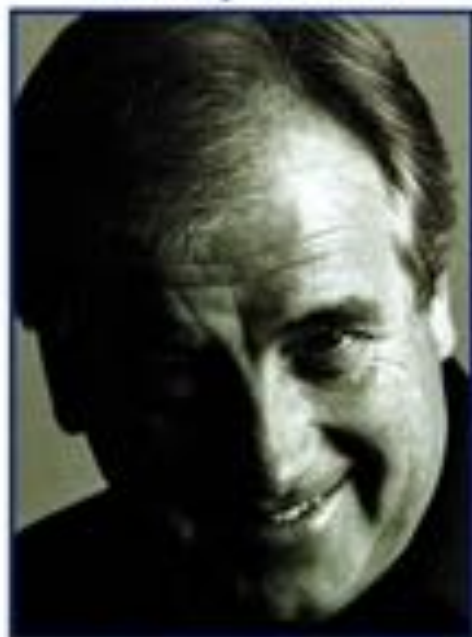
The Officials and Committee of the Manx Amateur Drama Federation organise many events during the year, besides the Easter Festival, including the Young Actor of Mann, the One Act Play Festival and drama courses as well as being the umbrella organisation for Drama and Musical theatre throughout the island. I am deeply indebted for their work and loyalty to me. We are also the organising body for the Friends of the Festival.

Without the financial support of the Isle of Man Arts Council, Patrick Taylor (who I am glad to report is making good progress after a very unwell winter), Bradford & Bingley and many smaller supporters, this festival would not be possible; my committee and I are very appreciative.

I wish you all a Happy Easter and a relaxing time, whether you are visiting our island for the first time or as an 'old hand'.



## *V Briw Ain* Our Adjudicator



*Paul Fowler GoDA*

Paul Fowler is absolutely delighted to be making a return visit to the Isle of Man to adjudicate his second Easter Festival of plays.

Paul has been involved in the amateur theatre all his adult life, spending over 30 years as an actor, director and stage manager, company committee member, chairman and festival organiser.

A journalist, broadcaster and public relations consultant by profession, Paul has worked for newspapers, magazines, television and radio stations all over the world, specialising in his other great passion – motorsport – and in particular, motorcycle racing.

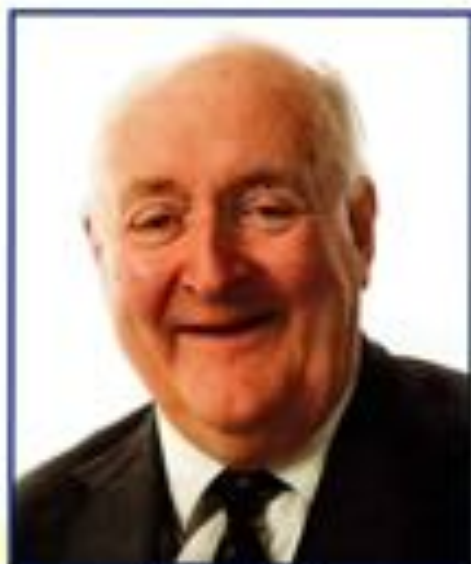
He has been a well-known commentator on top level motorcycle racing and therefore a frequent visitor to the Isle of Man TT Races, PR spokesman for the motorcycle industry and a tutor in television and radio presentation courses in Westminster, aimed at helping politicians, public service employees and top level businessmen deal with the electronic media.

Recently Paul took a break from his career and graduated from the University of Essex with an Honours Degree in Drama and Literature. He is currently a study skills lecturer at schools and colleges all over the UK.

Paul is an inveterate playgoer to both professional and non-professional theatre and an avid reader of scripts and other theatrical literature. He is also a reviewer for the theatre website [www.uktw.co.uk](http://www.uktw.co.uk)

Notable recent festival experiences have included trips to the Welwyn, Cambridge, Swindon and the RAF Theatre Association one act festivals, as well as full length festivals at Felixstowe, Fleetwood and Hertford and visits to Ulster to adjudicate at Portadown, Larne and Newtownabbey.

Paul is a member of the GoDA Governing Council where he holds the post of Information Officer.



*Mr Patrick Taylor*

We have heard of the illness of our major sponsor, Mr Patrick Taylor.

Mr Taylor has been in hospital in England for some time now but we are glad to hear that his health is improving.

The Manx Amateur Drama Federation wishes Mr Taylor a speedy recovery and hope he is able to return to the Island soon.

It is with great sadness that MADF have to pass on news of the death of Simon Caine, in May 2007. Simon was involved with MADF for many years, as a Rep for the Service Players and latterly as Vice Chairman. Simon was happiest working 'behind the scenes' and was always keen to help in any way. He is sadly missed.

## *Conastey Drama* *Amateyragh Vannin* The Manx Amateur Drama Federation

(Affiliated to NDFA)

### Patrons

*His Excellency The Lieutenant Governor*  
*Vice Admiral Sir Paul Haddacks KCB*  
*& Lady Haddacks*

### President

*Mr. John Bowring*  
**Chairman**

*Mr. Michael J. Lees*

**Vice Chairman**

*Mr. Mark Cliff*

**Hon. Treasurer**

*Mrs. Aalin Cunningham*

**Hon. Secretary**

*Mrs. Olga Gray*

**Easter Festival Co-ordinator**

*Mrs. Jan Percival*

### Committee Representatives from:

*The Albany Theatre Group*

*Arbory Players*

*Dramatis Personae*

*Friends of the Easter Festival*

*Friends of the Gaiety*

*The Gilbert & Sullivan Society*

*The Legion Players*

*The Manx Operatic Society*

*The Rushen Players*

*The Service Players*

### Life Members

*Mr. J. Bowring*

*Mrs. A. Cunningham*

*Mrs. O. Gray*

*Mrs. J. Hall*

*Mr. M.J. Lees*

*Mrs. J. Percival*

*Mrs. R. Savage*

*Mrs. J. Webb*

*Mr. S. Whittam*

*Mr. J. Wright*



Black

Grace

Cowley

CHARTERED SURVEYORS  
ESTATE AGENTS & VALUERS

**Wishes all the competitors the  
very best for a successful week**

## *Cloieder Aeg Vannin* Young Actor of Mann Award 2008



*The Finalists. From left to right: Natasha Torin; Kate Holland; Nicola Logan; Christopher Lodge (kneeling); Michael Lees, Chairman MADF; Mike Tilbury; GoDA; Baillie Watterson (kneeling); Jacqui Hawkes - Organiser of the YAOM; Emily Biggart & Jenny Callister*

During the Festival, seven of the Island's leading drama students will be bidding to follow in the footsteps of Emma Sayle, who was last years winner of the award.

This years event was again organised by Jacqui Hawkes, who also runs the Stage One Drama School. The 2008 finalists were chosen during the One Act Festival by Mike Tilbury GoDA. In fact, Mike was so impressed by the extremely high standard of the performances, that he could not separate out anyone not to be included in the next round! This will certainly give

our Adjudicator, Paul Fowler GoDA, a difficult task at the final, which takes place on Wednesday 26th March at 2pm in the Studio Theatre at Ballakermeen High School, Douglas. It would be nice if as many of our patrons as possible could be present to support the young people.

All our finalists will be presented with certificates to mark the occasion while the winner, as part of their Travel Services/Cowley Groves sponsorship, will attend the Thrift Drama Summer School in Gloucestershire.



### 34TH MANANAN INTERNATIONAL FESTIVAL

15TH TO 29TH JUNE 2008

### MANANAN OPERA FESTIVAL

7TH SEPTEMBER TO  
11TH SEPTEMBER 2008



FOR INFORMATION ON OTHER EVENTS AT THE ERIN ARTS CENTRE,  
VISIT OUR WEBSITE:

[WWW.ERINARTSCENTRE.COM](http://WWW.ERINARTSCENTRE.COM)

THE ERIN ARTS CENTRE  
VICTORIA SQUARE, PORT ERIN  
BOOKING OFFICE 01624 832662  
(TUESDAY TO FRIDAY 1.30 TO 4.30PM)



*Feailley Cloieahyn Un Aght*  
 Manx Amateur Drama Federation 2008 One Act Play Festival - The Awards



Mark Clift Trophy  
 Best Male Performance  
 Bernard Doyle as Nicolas in  
 'One for the Road' Balally Players



Jean Webb Trophy  
 Best Female Performance  
 Beth Espey as Tracy in  
 'That Old Black Magic' The Service Players



Northern Arts Rose Bowl for Best Play 'One for the Road'  
 Balally Players, Dublin



Rushen Players Presidents Trophy  
 Best Supporting Male  
 Ian Galloway as Bernard in  
 'Last Tango in Port Rushen'  
 The Rushen Players



The Personal Choice Ltd Award  
 for Best Supporting Female  
 Lisa Krenskey as Donna in  
 'Babysitting Galin' The Service Players  
 Collected by Lisa Creighton, Director



The Caine Family Trophy Best Director  
 Wesley Scully for 'One for the Road' Balally Players, Dublin





*The John Bowring Trophy (Runner Up) 'Babysitting Calvin'  
The Service Players*



*The Nadine Talbot Award  
Best Dramatic Moment  
Bernard Doyle  
'One for the Road' Balally Players*



*The Sure Mobile Trophy  
Best Use of Sound & Lighting  
Wesley Scully  
'One for the Road' Balally Players*



*Daphne Clark Memorial Trophy Best Comedic Moment:  
Chris and Howard Caine 'Babysitting Calvin' The Service Players*



*President's Cup (Adjudicator's Award)  
Marx National Youth Theatre  
for Perseverance Under Adversity  
'The Merchant of Venice'  
Collected by Susie Beswick*



*Cyril Spencer Award  
Best Performance under 21  
Dan Palmer from the Marx National  
Youth Theatre for his role as Shylock  
in 'The Merchant of Venice'  
The Award was collected on his  
behalf by  
Susie Beswick*

## Tomorrow's colour printing technology - today!

Who else can print, collate, envelope, despatch and deliver?

Brochures, letters, menus, invitations and business cards

- Latest high quality digital print
- No minimum quantities or hidden extras
- Great personal service at great prices

To find out more  
or for a quote call  
**(01624) 698444**

Isle of Man  
**Post**  
Ellen Vannin

Tel  
**(01624) 698444**

Email  
[ims@iompost.com](mailto:ims@iompost.com)

Web  
[www.iompost.com](http://www.iompost.com)



## Bejou Productions

### The Players

Bejou were formed in 2003, when some like-minded people got together to perform high-quality plays for discerning audiences. We have performed one full-length play a year since then.

This is our second year in the Isle of Man Festival and we are delighted to have been invited to perform again in this prestigious event.

### The Play

Into his derelict household shrine, Aston brings Davies, a tramp – but a tramp with pretensions, even if to the world he may be a pathetic old creature. All that is left of his past now is the existence in Sidcup of some papers; papers that will prove exactly who he is and enable him to start again. Aston, too, has his dreams: he has always been good with his hands and there is so much to do in the house. Aston's hopes are tied to his flash brother Mick's; he has aspirations to live in a luxurious apartment. Human nature is a great spoiler of plans, however .....

This is classic Pinter at his best.

## Jesarn 22nd Mayrnt 'The Caretaker' by Harold Pinter

### The Cast and Crew

Mick  
Aston  
Davies

Jeremy Battersby  
Richard Foster  
Jonathon Peters

Director  
General Dog's Body

John White  
Debbie Brady

Act One  
Act Two  
Act Three

A night in winter  
A few seconds later  
A fortnight later

Time – circa 1960

Place – a shabby room in a derelict house in London

The Play will run for approximately 2 hours.  
In addition, there will be an interval of 15 minutes.

Mark Clift is happy to sponsor this page

*The Sefton Hotel offers the perfect pre and post Theatre treat.*

*You can choose from an elegant 3-course pre-theatre meal  
in our Award-Winning Gallery Restaurant  
or simply relax and enjoy an informal bar meal in Sir Norman's.*

**Make it Special; Make it 'The Sefton'**



*The  
Gallery  
Restuarant*



**Sefton Hotel**



*After the Theatre come back to  
Sir Norman's for wine and  
cocktails for the perfect end to  
your night.*

*Food served until 11pm*

*Harris Promenade,  
Douglas, Isle of Man IM1 2RW*



*Sir  
Norman's  
Bar*



*For more information please telephone **01624 645500** or visit [www.seftonhotel.co.im](http://www.seftonhotel.co.im)*



## In Yer Space

### The Players

In Yer Space was set up in 1999 specifically for a two-handed version of Marlowe's *Dr Faustus* at the Edinburgh Fringe Festival. Since that time productions of Stephen McDonald's *Not About Heroes*, Miller's *A View From the Bridge*, Pinter's *The Birthday Party*, Neeson-Williams's *Body*, Alan Bennett's *Talking Heads*, Terence Rattigan's *Spoonface Steinberg*, Stephen Dirdale's *Novels of Eve*, Mary Jones' *A Night in November*, Mark O'Rourke's *Howie the Rookie*, Debbie Holt's *The Woman Who Cooked Her Husband*, Jim Cartwright's *I Liked a Slag's Deviant*, John Russell's *Warwick and Emma*, Onda O'Brien's *Oliver Pigs*, have been performed at the fringe often with productions stopping off at the Buxton Festival Fringe prior to Edinburgh.

A number of productions have been Festival winners at major national Drama Festivals such as Gairdrieudubh Wells, Hertford Wakefield, Felicitous and the Isle of Man. Productions of *A Night in November*, *The Woman Who Cooked Her Husband* and *Crysal Clear* have been selected for the British All Winners Festival with *A Night in November* being the runner up in 2003 and *The Woman Who Cooked Her Husband* and *Crysal Clear* the Festival winners in 2004 and 2005 respectively. In 2003 *A Night in November* was selected for the National Student Drama Festival in Scarborough.

Productions have toured to other venues including the Theatre by the Lake, Warwick, the Brewery Arts Centre, Kendal, the Penwith Playhouse, Penwith, the Lawrence House Studio Theatre, the Grand Theatre Blackpool, the Grange Arts Centre, Oldham, Stockport, Manchester and the Cottesloe Theatre at the Royal National Theatre, London.

*IN YER SPACE* has successfully embarked on its *IN YER SPACE* In yer local pub tour of the Isle of Man with *A Night in November*, *Howie the Rookie* and *I Liked a Slag's Deviant*, which received funding from the Isle of Man Arts Council. The company is made up of past and present students of Arnold School, Blackpool, many of whom go on to either University Drama Departments or Drama Schools including: RADA, LAMDA, The Royal Welsh College of Music and Drama, East 15 Theatre School, the Arts Educational Schools, London, the Central School of Speech and Drama, the Webber Douglas Drama Academy of Dramatic Art, Mountview Academy of Theatre Arts, Manchester Metropolitan School of Theatre, The Royal Scottish Academy of Music and Drama, Hull University Drama Department and Hull University Scarborough Campus, the University of Birmingham Drama Department and Royal Holloway College, University of London, the University of Warwick, the University of Chester and the University of Glasgow. In fact twenty four students have gone on either to Drama School or University Drama Departments in the last nine years, including two to RADA.

### The Play

Set in mid-sixties England, Amanda Whittington's bittersweet play tells the story of Mary, a seventeen year old girl who is single and seven months pregnant. Bundled off to St. Saviour's, a Church of England-run mother and baby home, by her 'concerned' mother who has arranged for the baby to be adopted after it's born. Mary finds comfort and friendship with the other girls at the home, but ultimately, like them, has to face up to her tragic situation alone.

Featuring the uplifting sounds of the 60's girl groups such as The Shangri-La's and The Ronettes, *Be My Baby* is a moving and poignant story of how youthful fantasies of romance and marriage are inexorably turned to outrage by powerless adulthood.

## Jedoonee 23rd Mayrnt

### 'Be My Baby' by Amanda Whittington

#### The Cast and Crew

Mary  
Dolores  
Queenie  
Norma  
Matron  
Mrs Adams

Sophie Coulon  
Rebecca Jones  
Sophia Bayjoo  
Charlotte Jones  
Hannah Wildsmith  
Sarah Spiro

Director  
Sound and Lighting  
Stage management  
Choreography

Colin Snell  
Andrew Gray  
Emily Oldroyd  
Sophie Coulon

by arrangement with Nick Hern Books

The Play will run for approximately 90 minutes.

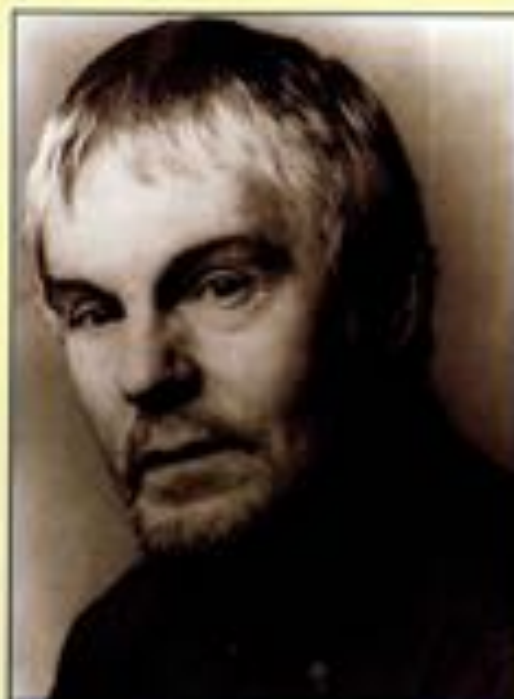
There will be no interval.

Jenny and Brian Green are happy to sponsor this page





# National Drama Festivals Association



## ***35th British All Winners Festival***

**Gaiety Theatre, Douglas**

**Saturday 19th July 2008**

to

**Friday 25th July 2008**

at 7.30pm each evening

**Adjudicator: Colin Dolley GoDA**

**Your chance to see the Best of British Amateur Theatre**

**Friday  
25th July 2008**

**An Evening with**

**Sir Derek Jacobi**

(Subject to Confirmation)

Followed by the Award Ceremony

**Two Workshops with  
Tony Rushforth GoDA**



## St. Ninian's Players

### The Players

St Ninian's Players have been established for over 15 years.

We are a flexible company having performed plays, musicals and pantomime.

Our productions to date have included well known pieces such as "The Boyfriend", "Joseph and his Amazing Technicolor Dreamcoat", "The Prime of Miss Jean Brodie", "Steel Magnolias", "Once a Catholic" and "Stepping Out".

We performed at the Easter Festival of Plays last year with "A Parking Lot in Pittsburgh". The ages of the group range from 20 to 70, with children performing in pantomimes and musicals.

We generally perform 2 - 3 shows each year with the full involvement of the company.

Our aims are:  
To promote drama in the community.

To provide a variety of entertainment to a wide and varied audience.

To provide entertainment of a high standard.

### The Play

Five interlinked plays set in a National Health hospital during visiting hour. Alternatively funny and sad - with elements of comedy, pathos, satire and nostalgia - there is something for everyone. Each play is about ordinary people, patients and visitors alike and although some characters are somewhat larger than life, we have no difficulty in identifying with them and their particular situations.

"Visiting Hour" is packed with sharp lines and cruel characterisation and provides a most enjoyable evening's entertainment.

## Jefune 24th Mayrnt 'Visiting Hour' by Richard Harris

### The Cast and Crew

	PLASTER		GOING HOME
Eric	John Cuthbertson	Cheryl	Lorraine Lewis
Helen	Lorraine Lewis	Tricia	Lorna Sinclair
		Hazel	Christine Shearer
		Eileen	Valerie Rodgers
		Visitor	Jim Crawford
Pauline	Joyce Maxwell	Husband	Jon Cuthbertson
Old Woman	Alva Caldwell		
			MAGIC
		Naomi	Joyce Maxwell
		Fiona	Jim Crawford
		Darbo	Lorna Sinclair
		Male Nurse	Christine Shearer
		Maureen	Jon Cuthbertson
		Julia	Lorraine Lewis
		Son-in-Law	Valerie Rodgers
		Critic	Lorraine Lewis
		Daughter	Lorraine Lewis

Director	Joyce Maxwell
Director - Keeping Mum	Jim Crawford
Stage Manager	Margaret Arrol
Stage Crew	Michael Meehan Eamonn Rodgers

The Play will run for approximately 2 hours

In addition, there will be an interval of 15 minutes

Jenny and Brian Green are happy to sponsor this page



# Clear thinking



Our range of bespoke investment and tax planning products has been clearly developed to meet the needs of both private and corporate investors in the United Kingdom, Isle of Man, Channel Islands and Hong Kong. We understand that superior service is key to our customers and we are therefore committed to providing top quality administration and technical support.

To find out more call our dedicated IFA Sales Support Team on **01624 681893**  
or visit **[www.spila.com](http://www.spila.com)**

*This is not a consumer advertisement. It is intended solely for use by intermediaries.*

SCOTTISH  
**PROVIDENT**  
INTERNATIONAL

[www.spila.com](http://www.spila.com)

Scottish Provident International Life Assurance Limited is a provider of investment, life assurance and retirement planning products. Scottish Provident International Life Assurance Limited is regulated by the Isle of Man Government Insurance and Pensions Authority. Registered Office: Provident House, Ballacottier Business Park, Coil Road, Douglas, Isle of Man, British Isles IM2 2SP. Telephone: 01624 681681. Telephone calls may be recorded. Fax: 01624 677336 or Website: [www.spila.com](http://www.spila.com). Registered in the Isle of Man Number 053002C. A Member of the Association of International Life Offices.



# Wakefield Little Theatre

## The Play

Local mining communities suffered incredible hardship due to the attack on their industry by the Thatcher and Major governments. The 1984 miner's strike effectively destroyed trade union power in the British coal mining industry. 'Brassed Off' is set in 1994, during the reign of John Major, when Michael Heseltine presided over a huge programme of pit closures, as President of the Board of Trade. Resistance to the closures, which had been so strong in 1984, had been replaced by resignation and a spirit of hopelessness, but one man saw a chance to restore pride in the community through its music.

Gloria has been sent to her old hometown of Grimley to determine the profitability of the pit. She joins the local brass band, made up of miners and must conceal her work. She renews a childhood romance with Andy which soon leads to complications. Faced with the imminent closure of the pit, the community begins to unravel and the passionate band leader, Danny, finds he is fighting a losing battle to keep the rest of the band members committed.

## Lofthouse 2000 Brass Band

Lofthouse 2000 Band was reformed in 1999 and has gone from strength to strength. It is currently in the fourth section and has 'lofty' aspirations. The band has a busy concert schedule, taking to the stage in towns all over the country: Wakefield, Leeds, York, Cirencester, to name a few and has an exciting and challenging repertoire of several styles of music, from Wagner to Lloyd Webber, classical overtures to pop ballads. The aim of the band is to keep brass banding alive through the youth of today and to have some fun along the way - members range from 8 years old to grandparents! Weekly rehearsals are on Saturday mornings from 10.00 am to 12.00 noon (unless the band has an engagement) at Lofthouse Methodist Church, where you are always welcome to go along and listen and have a cup of tea.

## Lofthouse 2000 Brass Band

Musical Director:	Andrew Whitaker
Principal Cornet:	James Whitaker
Soprano Cornet:	Peter Andrews
Solo Cornet:	Luke Whitaker
Solo Cornet:	Dan Watson
Solo Cornet:	Lauren Bell
Repiano Cornet:	Catherine Reid
2nd Cornet:	Georgina Mann
2nd Cornet:	Louise Saynor
3rd Cornet:	Thomas Bindon
3rd Cornet:	Beverley Brough
Flugel Horn:	Janet Reid
Solo Horn:	Natalie Kershaw
1st Horn:	Belinda Humphrey
2nd Horn:	Mark Lazenby
2nd Horn:	Jane Hearson
1st Baritone:	James Higham
2nd Baritone :	John Ellis
1st Trombone:	Richard Brearley
2nd Trombone:	Bill Brownridge
2nd Trombone:	Joshua Wingfield
Bass Trombone:	Amanda Drake
Euphonium:	Jane Klejnow
Euphonium:	Dave Kitson
Euphonium:	David Flatman
EEb Bass:	Frank Feltell
EEb Bass:	David Brown
BBb Bass:	Mell Waring
BBb Bass:	Graham Reid
BBb Bass:	Terry Ellis
Percussion:	Matthew Good
Percussion:	David Richards

# Jemayrt 25th Mayrnt 'Brassed Off' by Paul Allen

## The Cast and Crew

Shane	Callum Austin
Danny, his grandad	Keith Priest
Phil, Danny's son	Paul Haley
Sandra, Phil's wife	Maxine Mahon
Jim	Andy Reece
Vera, Jim's wife	Audrey Egarr
Harry	Keith Watson
Rita, Harry's wife	Helen Watson
Andy	Simon Reece
Gloria	Sarah Millns
Nurses & Pit Women	Mon Haley
Rozi Afferson	Shelia Priest

## Produced and Directed by Paul Haley

Lighting	Chris Evms
Stage Manager	Gail Rogers
Costume	Rozi Afferson
	Helen Watson
Properties	Shelia Priest
Crew	Paul Taylor
	Edmund Bell
	Carlton Greasley

The Play will run for approximately 2 hours 20 minutes

In addition, there will be an interval of 15 minutes

Bob and Trish Brown are happy to sponsor this page



Take your company's printed  
image to  
new heights



We are also the home to the Isle of Man's leading publications  
**MANX LIFE • MONEY MEDIA • MANX TAILS**

## **MANNIN PRINTING**

Media House Cronkbourne Douglas Isle of Man IM4 458 Tel: 01624 696578 Fax: 01624 625623  
Email: [mail@manningmedia.co.im](mailto:mail@manningmedia.co.im) Website: [www.manningmedia.co.im](http://www.manningmedia.co.im)

The Art of Communication





## Nantwich Players

### The Players

In October 1927 the first meeting of the Nantwich Play Reading Circle was held at the home of a local doctor. In October 1928 the possibility of staging plays was discussed and the general opinion was against the idea. This changed in 1931 when the first stage performance took place. In 1935 the Nantwich Players were formed alongside the play reading circle and it was only in 1973 that the overall name became Nantwich Players. In 1978 an opportunity arose to purchase a building that had been used as a scenery store. It had been a friends Meeting House which was considered an eyesore by the local Council who had plans for a large car park adjacent to the building. However, an offer was made to purchase the building for conversion into a little theatre and work began in 1980.

It was October 1983 that the Theatre opened with 'The Good Companions'. In 2002 other major work was carried out to give us the Theatre we have today with a capacity of 82 in tiered cinema-type seats. We run 7 nights, present 5 plays each season plus a youth production. We usually play to full houses each night. On most Tuesday evenings we have a member's night with play readings, workshops, cheese and wine evening, visit to a skittle alley etc. Our membership is just over 100 with a youth section restricted to 20. The main problem we have is lack of sufficient storage space, although we do have a costume store. We do, of course, have a bar! What little theatre could manage without this facility?

### The Play

This is one of Terence Rattigan's most popular plays, first performed in 1954, when he was at the height of his powers. The play is set in a general private hotel which caters for the most part for its long term residents. It is the relationships between these retired gentlefolk that the author depicts so brilliantly. The characters are richly drawn and as the action unfolds, the tension lying beneath the polite surface are gradually revealed and there are many surprises.

After the arrival of John Osborne's 'Look Back In Anger' in 1956, which signalled the arrival of so-called 'kitchen sink drama', Rattigan's style fell out of favour. However, recent years have seen a substantial revival of the work of Terence Rattigan. New productions have been greeted with surprised delight that the acknowledged master of the 'well-made play' can continue to provide powerful emotions. As he himself wrote: "I believe that the best plays are about people and not about things".

## Jecrean 26th Mayrnt

### 'Separate Tables' by Terence Rattigan

#### The Cast and Crew

Charles Stratton  
Jean Tanner  
Mrs Railton-Bell  
Lady Matheson  
Miss Meacham  
Mr Fowler  
Mabel  
Doreen  
Mrs Anne Shankland  
Miss Cooper  
John Malcolm  
Major Pollock  
Sibyl Railton-Bell

Neil Hodges  
Angela Young  
Helen Gresty  
Charlotte Lightbody  
Moirá Hignett  
Brian Rushbrooke  
Judy Naden  
Rachel Dennis  
Virginia Meir  
Linda Evans  
Ken Riley  
Tom Brookes  
Linda Storey

Director  
Stage Manager  
Property Mistress  
Set Design  
Set Building and Painting  
Lighting

Thelma Eastwood Angus  
Lou Lockett  
Ruth Lodge  
Richard Thompson  
Nantwich Players  
Ian Lightbody

The play is set in the Dining-room and the Resident's Lounge of the Beauregard Private Hotel, in the mid 1950's

#### TABLE No. 1

Scene 1 - the Dining-room, about 7 o'clock  
Scene 2 - the Lounge, immediately after dinner  
Scene 3 - the Dining-room, next morning

#### TABLE No. 2 (18 months later)

Scene 1 - the Lounge after tea  
Scene 2 - the Dining-room, that evening

The Play will run for approximately 2 hours.  
In addition, there will be an interval of 15 minutes.

Olga and Michael Gray are happy to sponsor this page





**TRAVEL SERVICES ISLE OF MAN**



**Manx Amateur Drama Federation  
Easter Drama Festival 2008**

Travel Services (IOM) offer competitive sea and air travel prices combined with Guest-House and Hotel accommodation.

Self-Catering holidays and car hire are also available.

To book your Travel and Accommodation package for next years Easter Drama Festival Contact Travel Services (IOM)

**RESERVATIONS 01624 661177**

Email: [iomts@manx.net](mailto:iomts@manx.net)

Web Site: [www.isleofmantravel.com](http://www.isleofmantravel.com)

Travel Services IOM, 12b The Village Walk, Onchan, IM3 4EB  
We are proud to be the Joint Sponsors of this years Young Actor of Mann



# Everyman Productions

## The Players

Founded in 1982 by the late Liam McKinney - Everyman Productions - Sligo have striven to bring the highest quality theatre to the widest possible audience. To date they have achieved this by staging a diverse body of work such as 'One Flew Over the Cuckoo's Nest', 'Playboy of the Western World', 'Death of a Salesman', 'Philadelphia Here I Come' and 'Of Mice and Men' to name but a few.

In 2001 they brought 'Twelve Angry Men' to the Manx Festival and the following year they won the festival with their production of 'The Mai' which then went on to win the British All Winners Finals in Hertfordshire. They have since visited the Festival with 'Therese Raquin' and hope to continue their association with this wonderful festival for many years to come.

## The Play

Set against the backdrop of the devastation of the Irish Civil War in 1922, Sean O'Casey's masterpiece 'Juno and the Paycock' tells the story of the Boyle family whose day to day life in inner city Dublin is one of mere existence and constant, grinding poverty. When the death of a distant relative results in their inheriting a substantial sum of money, it seems as if all their troubles are over. Unfortunately elation soon turns to disaster and the ultimate destruction of the family unit. Although a tragedy, O'Casey uses some of his best known, colourful and complex characters together with the beauty of his language and unforgettable comedic situation, to weave this rich tapestry of great Irish literature.

# Jerdain 27th Mayrnt

## 'Juno and the Paycock' by Sean O'Casey

## The Cast and Crew

Mary Boyle  
Johnny Boyle  
'Juno' Boyle  
Gerry Devine  
'Captain' Jack Boyle  
'Joxer' Daly  
Charles Bentham  
Maisie Madigan  
Mrs. Tancred  
'Neddies' Nugent  
1st Irregular  
1st Furniture Removal Man  
2nd Furniture Removal Man  
2nd Irregular

Directed by  
Stage Manager  
Assisted by

## Set Design & Construction

Costumes  
Lighting Design

Sarah Burns  
Dermot Ryan  
Denise Burns  
Micky Murray  
Gerry Ryan  
John Caheny  
Ronan Brennan  
Meg Leahy  
Siobhan Terry  
Dessie Hughes  
Kevin Boyle  
Gerry Norman  
Liam Cunningham  
Vincent Holla

Aine Gilmore  
Anne McElhone  
Jean McConnell  
Frances Ryan  
John Scott  
Dessie Hughes  
Eamon Dowdican  
Alan Harte  
Bernie Norman  
Nick McCall

Setting : Dublin Tenement 1922

Main Interval between Act 1 and Act 2 Short Interval between Act 2 and Act 3

The Play will run for approximately 2 hours.

In addition, there will be an interval of 15 minutes.

Ailin is happy to sponsor this page

'The Horwath team have given me the time to concentrate on my creative calling.'



For further information please visit [www.horwath.co.im](http://www.horwath.co.im) or call Roger Barrs on 627335.



Victory House, Prospect Hill, Douglas, Isle of Man, IM1 1EQ.  
Telephone: 01624 627335 Facsimile: 01624 677225  
E - Mail: [mail@horwath.co.im](mailto:mail@horwath.co.im)

Horwath  
Clark  
Whitehill LLC



# Romiley Little Theatre

## The Players

Romiley Little Theatre is based in South Manchester and has been in existence for over 60 years, during which time it has produced a wide variety of plays and musicals. More recently it has gained a reputation for performing premieres, which have included John Godber's 'Unleashed', Alan Ayckbourn's 'House/Garden', Jim Cartwright's 'Eight Miles High' and Bob Carlton's 'Return to the Forbidden Planet'.

The theatre group has also, in the last couple of years, started to embrace new writing, working with Manchester based writer Rob Johnston on a series of plays, one of which, 'Taking Stock', was premiered by RLT in our usual venue, Hyde Festival Theatre. It was subsequently selected to be one of 21 plays for Manchester's 24:7 Theatre festival in 2006.

Recently several of our members have gone on to train at drama school, both in acting and stage management and are now working professionally.

## The Play

Pre-dating 'Brassed Off' by about 10 years, 'One Big Blow' is set in a coal mining village in the 1980's, showing two sides of the miners' lives; the tough conditions under which they work and the effect this has on their health and their escape from this when they play in the colliery brass band. Even this is tainted when Wally, the lead cornet player, begins to suffer from pneumoconiosis and can play no more - the search is on to find a replacement.

It features original music by Rick Lloyd, all sung acapella and even the brass band is done with voices. 25 years ago the innovative 7:84 Theatre Company toured village halls, particularly pit villages with this production. In 1982 it was televised by Granada Television. The play isn't published and RLT have been dealing directly with the writer, John Burrows. We have also been granted access by John McGrath's (the founder of 7:84) widow to all the original production notes, which are now held in the library at Cambridge University.

One other interesting note is that all six actors in the original production went on to form 'The Flying Pickets' acapella group who charted in the 1980's.

# Jeheiney 28th Mayrnt 'One Big Blow' by John Burrows

## The Cast and Crew

Wack/Mike	Martin Vernon
Jock/Duncan Vigar	Chris Williams
Taff/Psycho	Vince Bowers
Stanley/Yorkie	Ches Talbot
Geordie/Jimmy	Adam Urey
Kid/Wally	Shaun Penton

Director	Peter Wright
Musical Director	Paul Lawton
Assistant Musical Director	Shaun Penton
Choreographer	Hayley Hohnson
Stage Manager	John Hale
Lighting Design	Peter Wright
Lighting Operator	Paul Wilson
Wardrobe	Gill Thomas
	Julian Thomas

The Play will run for approximately 2 hours.  
In addition, there will be an interval of 15 minutes.

Emma Percival is happy to sponsor this page



# JOHN WRIGHT LEGAL CONSULTANT

Manx Advocate  
English Solicitor  
Notary

Public Accredited Mediator

Specialist legal services on a personal level, tailored payment plans, personal attention.

For an overview visit my websites or write, call, fax or e-mail me.

Thinking and advice "outside the box" to deliver the results you want at fees you can afford.

Wills on line.

Alternative Dispute resolution a speciality.

16 Willowbrook Gardens  
Douglas  
Isle of Man IM2 2QQ

Tel: 00 44 1624 611999

Fax: 00 44 1624 627344

Mobile: 00 44 7624 494640

[www.johnwright.co.im](http://www.johnwright.co.im)  
[www.manxmediation.co.im](http://www.manxmediation.co.im)  
[www.manxwills.co.im](http://www.manxwills.co.im)

## SITGES APARTMENTS



All year round availability. 2 stunning apartments in Sitges, 20 minutes south of Barcelona. Both apartments are less than 5 minutes from the beach and the railway station (trains to Barcelona and Airport every 15 minutes). They each have full air conditioning, central heating, fully equipped kitchens and laundries, balconies and UK Free Sat TV in the living area and master bedroom.

Each has an En suite master and a separate second bathroom.

Apartment 1 has two double, one twin and one bunk bed room and can be viewed at  
[http://www.lovingisitges.com/Sitges\\_apartment\\_6860.html](http://www.lovingisitges.com/Sitges_apartment_6860.html)

Apartment 2 has two doubles, a twin and a double sofa bed and can be viewed at  
[http://www.lovingisitges.com/Sitges\\_apartment\\_6865.html](http://www.lovingisitges.com/Sitges_apartment_6865.html)

Check availability on line and then 'phone 611999 to obtain up to 25% Manx resident's discount

### Catalan Country Farm House

40 miles inland from Sitges. 4 double bedrooms, three bathroom's, two large living and dining areas, two kitchens, two large patios, Jacuzzi and pool. One acre fruit garden. Can be divided and used as two separate, two bedroomed, units. Fully air conditioned and centrally heated. Car essential, nearest village 5 miles with restaurant, bread shop and General Store and Grocers/butchers.

Low Season 600/400 Mid 750/500 High 1,000/600 per week in Euros.









# Friends of the Easter Festival

In association with the Manx Amateur Drama Federation

Proudly Presents

## 2008 FESTIVAL LUNCH

Guest Speaker

**Paul Fowler GODA**

**"An A to Z of the Drama Festival"**

to be held at the

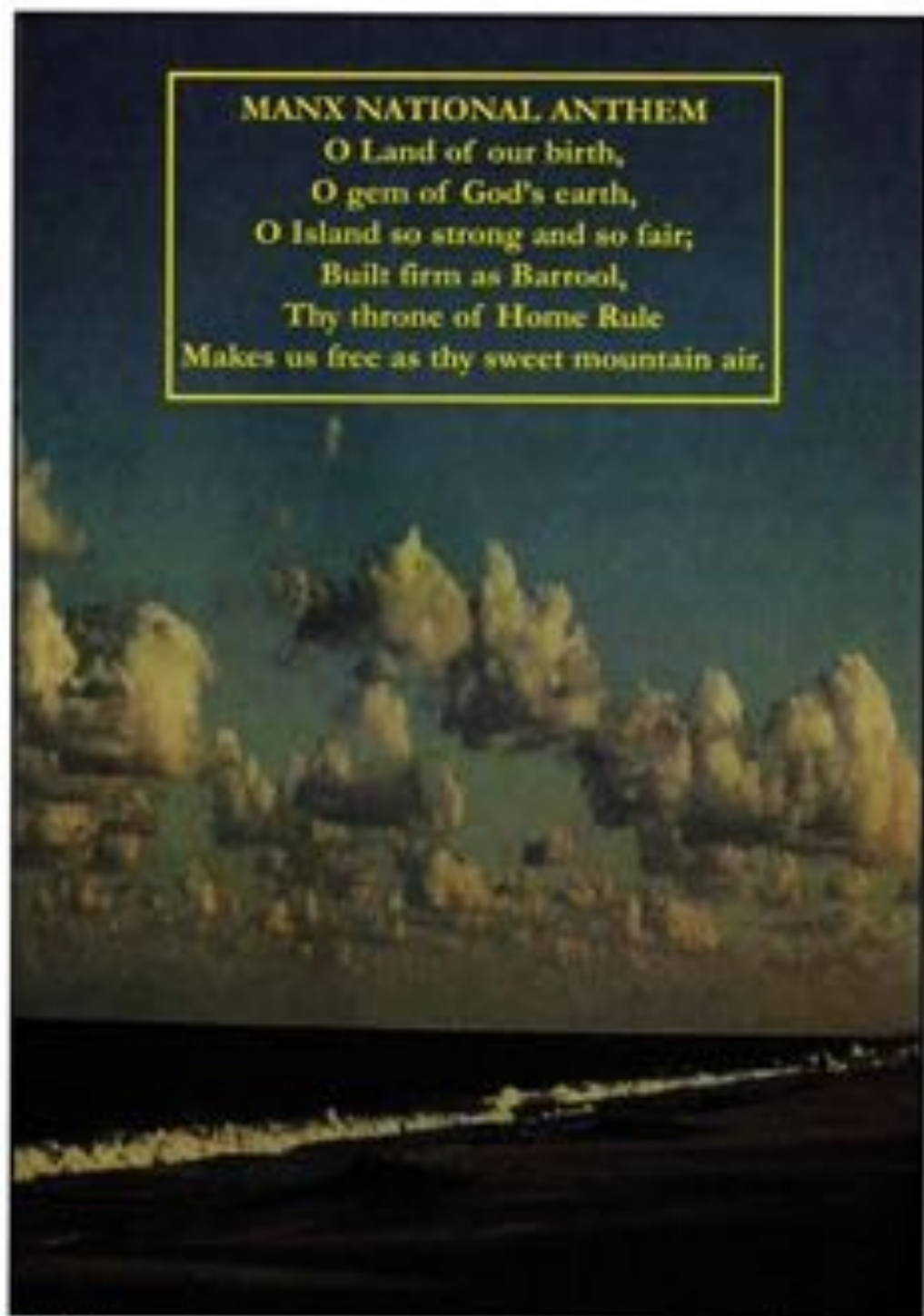
**Empress Hotel, Central Promenade**

**Easter Monday 24th March  
at 12noon for 12.30 pm**

To Book Please Contact Vivienne Hague Tel: 674868

**£15.95 including Buffet Lunch**

MANX NATIONAL ANTHEM  
O Land of our birth,  
O gem of God's earth,  
O Island so strong and so fair;  
Built firm as Barrool,  
Thy throne of Home Rule  
Makes us free as thy sweet mountain air.





## *Cosneyderyn Roie yn Feailley Ain* Previous Festival Winners

1950 The Thirteen Players, Bristol - 'Canaries Sometimes Sing'  
1951 Phoenix Theatre Group, Dublin - 'Michaelmas Eve'  
1952 Phoenix Theatre Group, Dublin - 'Lovers Meeting'  
1953 Withington Players, Manchester - 'The Tudor Wench'  
1954 The Thirteen Players, Bristol - 'Candlelight'  
1955 The Thirteen Players, Bristol - 'Frolic in April'  
1956 Withington Players, Manchester - 'The Gentle Arm'  
1957 Theatre One, Edinburgh - 'Dark of the Moon'  
1958 Theatre One, Edinburgh - 'Don't Listen Ladies'  
1959 Theatre Arts Club, Edinburgh - 'All My Sons'  
1960 Theatre Arts Club, Edinburgh - 'Diary of Anne Frank'  
1961 Cairde Fail, Dublin - 'Twilight of a Warrior'  
1962 Rushen ADS, Isle of Man - 'Ladies in Retirement'  
1963 Tudor Players, Manchester - 'Love and Lunacy'  
1964 Withington Players, Manchester - 'Billy Liar'  
1965 Fylde Coast Players, St Annes - 'The Rehearsal'  
1966 No Competition  
1967 Fylde Coast Players, St Annes - 'Fallen Angels'  
1968 Tudor Players, Manchester - 'Castle of Deception'  
1969 Litherland Dramatic Group - 'Oedipus Rex'  
1970 Green Room Players, Blackpool - 'Spring and Port Wine'  
1971 Legion Players, Isle of Man - 'Angels in Love'  
1972 Tudor Players, Manchester - 'Relatively Speaking'  
1973 Blackpool College Theatre Group - 'Home'  
1974 Formby Theatre Group - 'Ghosts'  
1975 Tudor Players, Manchester - 'Plaza Suite'  
1976 No Competition  
1977 Tudor Players, Manchester - 'The Price'  
1978 Dilys Guite Players, Sheffield - 'Blythe Spirit'

1979 Theatre One, Thornton - 'Home'  
1980 The Players, Cheadle Hulme - 'Table Manners'  
1981 Abbey Actors, Belfast - 'Echoes'  
1982 Group Theatre Company, London - 'Rashomon'  
1983 Theatre One, North Fylde - 'Exit the King'  
1984 Parkside Players - 'Da'  
1985 Tudor Players, Manchester - 'Bedroom Farce'  
1986 Tudor Players, Manchester - 'Accrington Pals'  
1987 Clarence Players, Belfast - 'The Goodbye People'  
1988 Martello Productions, Wicklow - 'Children of a Lesser God'  
1989 Group Theatre Company, London - 'Hard Times'  
1990 Martello Productions, Wicklow - 'Agnes of God'  
1991 Sedgefield Players, Co. Durham - 'Stepping Out'  
1992 Sedgefield Players, Co. Durham - 'Woman in Mind'  
1993 Group Theatre Company, London - 'September in the Rain'  
1994 St. James' Players, Burnley - 'Last Tango in Whitby'  
1995 Sedgefield Players, Co. Durham - 'Dancing at Lughnasa'  
1996 Tryst Theatre, Falkirk - 'Under Milk Wood'  
1997 Brigstow Theatre Company - 'Driving Miss Daisy'  
1998 Tudor Players, Manchester - 'Hindle Wakes'  
1999 Tryst Theatre, Falkirk - 'Cemetery Club'  
2000 Tudor Players, Manchester - 'The Curious Savage'  
2001 Bovindon Players, Bovington - 'Abigail's Party'  
2002 Everyman Productions, Sligo - 'The Mai'  
2003 In Yer Space, Blackpool - 'A Night in November'  
2004 Tudor Players, Manchester - 'The Prisoner of Second Avenue'  
2005 Tudor Players, Manchester - 'Humble Boy'  
2006 Cytringan Players, Kettering - 'Right Mother'  
2007 Cytringan Players, Kettering - 'Peggy for Your'



## *Eivrtys* Results

This page is for you to record the winners.

Breakdown of Marking: Acting 40 points;  
Production 35 points; Stage Presentation 15 points;  
Originality, Effort & Attainment 10 points

Best Play - The F.M. Cubbon Trophy

First Runner Up - The Dick Craine Cup

Second Runner Up - The Jack Lynch Cup

The Vanda Lambert Award Best Female Performance.  
(Replica Trophy Donated by Jean Webb)

The June Edge Cup Most Promising Performance under 21

The Edward S. Benn Award Best Male Performance.  
(Replica Trophy Donated by Mark Clift)

The Mollie Corkill Award Best Female Performance in a Supporting Role

The David Kennaugh Award Best Male Performance in a Supporting Role

The Olga Gray Adjudicator's Award Outstanding Contribution

The John Bryan Award For Audience Appreciation

The Michael J. Lees Award For Drama  
(Donated to mark the Golden Jubilee Festival Year)

The Richard Harris Memorial Trophy For Ensemble Acting  
(Donated by Group Theatre Company, London)

The Jackie Banner Award for Comedy

The J & B Green Award For Costume and Make - up

The Raven Players Award Best Producer / Director

The Frances Isaac Award Best Performance over the age of 60



## For the Gaiety

### Front of House

Heritage Manager  
Mervin Stokes MBE

Operations Manager  
Brian Murray

Front of House Duty Managers  
Neill Cowin and John Foster

Housekeeper  
Derek Hibbert

Ticket Office  
Villa Marina Reception  
and  
Isle of Man Welcome Centre

### Back Stage

Technical Manager  
Seamus Shea

Stage Manager  
Graham Bayliss

Theatre Technician  
Alex Davidson

Asst. Theatre Technician  
Carl Crellin

Asst. Stage Manager  
Ted Faragher

## For MADF

Stage Manager  
Emma Percival

Asst. Stage Manager  
Tony Eccles

Stage Crew  
Helen Clarke  
Jan Percival  
Mike Percival  
Louisa Thomas  
Fiona Quayle

Ably Assisted by  
representatives from  
Albany Theatre Group  
Dramatis Personae  
Friends of the Festival  
Friends of the Gaiety  
Legion Players  
Rushen Players  
Service Players  
and  
Members of the  
Manx Amateur  
Drama Federation

## Emergency Evacuation Procedures

If you are asked to evacuate the building, please do so as quickly as possible and leave by the nearest exit to which you are directed by the Staff.

In the event of an emergency which by necessity requires that this Theatre be evacuated, you as a member of the audience are requested to co-operate by paying strict attention to any instructions, either by announcement from the stage, or given verbally by a member of Staff at this Theatre.

**DO NOT PUSH OR RUSH**

**DO NOT** turn back or stop to collect any personal belongings.

**DO NOT** re-enter the building for any reason unless told to do so.

**DO NOT** act in a manner that could cause obstruction to emergency services attending the building to deal with the emergency.

**N.B.**

- All gangways, passages and aisles shall be kept entirely free from chairs or any other obstruction.
- Persons shall not be permitted to stand in any gangway or aisle.
- The safety curtain shall at all times be maintained in working order and shall be lowered and raised during the time of the performance.

**FOR YOUR OWN SAFETY**  
**PLEASE OBSERVE THESE INSTRUCTIONS**





**THE EMPRESS HOTEL  
MADF HEADQUARTERS  
FESTIVAL GREEN ROOM**

**22ND MARCH TO 28TH MARCH**

**SATURDAY, 22ND MARCH  
TO  
MONDAY 24TH MARCH  
THE EMPRESSES RESIDENT PIANIST**

**THURSDAY 27TH MARCH  
PURT L'NINJA CEILIDH BAND  
TRADITIONAL CELTIC MUSIC**

**LIGHT SNACKS AVAILABLE EVERY NIGHT  
NO BOOKING REQUIRED**

*G.H. Corlett*

ESTABLISHED 1835

**High Class Jeweller and Watchmaker  
Trophy Specialist and Engraving Service**

Suppliers of:

CITIZEN Accurist ROYAL LONDON & TIMEX Watches

Telephone: (01624) 676762 Fax: (01624) 661779

email: ghcorlett@enterprise.net www.ghcorlett-iom.com

4 & 6 Castle Street, Douglas, Isle of Man. IM1 2EU

MEMBER OF THE NATIONAL ASSOCIATION OF GOLDSMITHS

*Maneline*

**Unisex Hair Studio**

**1a Palatine Road, Douglas  
For all your Hairdressing needs**

**Telephone Jenny Green on  
01624 624263**

**to discuss your requirements**

*...helping  
you move*

**Success!**

**Sold** Subject to Contract

**COWLEYGROVES ● COM**



# A star performance every time

For over seventy years Conister Trust has been a proud member of the Isle of Man  
business community.

Through times of great change we have resolutely retained our independence and  
maintained our standing as a true Isle of Man company.

A constant throughout Conister's history has been our determination to provide the  
best quality service to our many customers. That service ethic is as strong as ever and is  
the driving force behind our move to new premises on the Isle of Man Business Park.

Coill Road, Braddan.

**Conister Trust Ltd.**  
...your local bank

Tel: 694666 (Direct) • Fax: 612764

Email: [manxbusiness@conistertrust.com](mailto:manxbusiness@conistertrust.com)

New Address: Conister Trust Ltd. • Conister House  
Isle of Man Business Park • Coill Road • Braddan IM2 2QZ



Conister Trust Ltd.

Licensed by the Isle of Man Financial Supervision

Commission for Banking Business.

All loans subject to status.