

Souvenir Programme

GAIETY THEATRE

DOUGLAS :: ISLE OF MAN

Proprietors : PALACE AND DERBY CASTLE LTD.

General Manager : R. Wilkinson

18th to 23rd MAY : 1964

FIFTEENTH
DRAMA
FESTIVAL
OF
FULL LENGTH
PLAYS

NIGHTLY at 7-30 P.M.

PRESENTATION OF THE "F. M. CUBBON" TROPHY,
THE "DICK CRAINE" CUP, THE "JACK LYNCH" CUP
ON SATURDAY, 23RD MAY, 1964

One Shilling

This Week's Great Cinema Attractions

STRAND STREET

Telephone: 14

PICTURE HOUSE

CONTINUOUS FROM 5-45 P.M. . . .

ZULU

starring

STANLEY BAKER : JACK HAWKINS

Technirama and Technicolour

ONE OF THE MOST OUTSTANDING FILMS EVER
MADE . . . IT'S A MUST!

VICTORIA STREET

Telephone 355

REGAL

MONDAY TO WEDNESDAY :

ROBERT MITCHUM : CURT JERGENS

in

THE ENEMY BELOW

Cinemascope and Colour

— ALSO —

LASSIE'S GREAT ADVENTURE

THURSDAY TO SATURDAY :

STEVE REEVES

in

SON of SPARTACUS

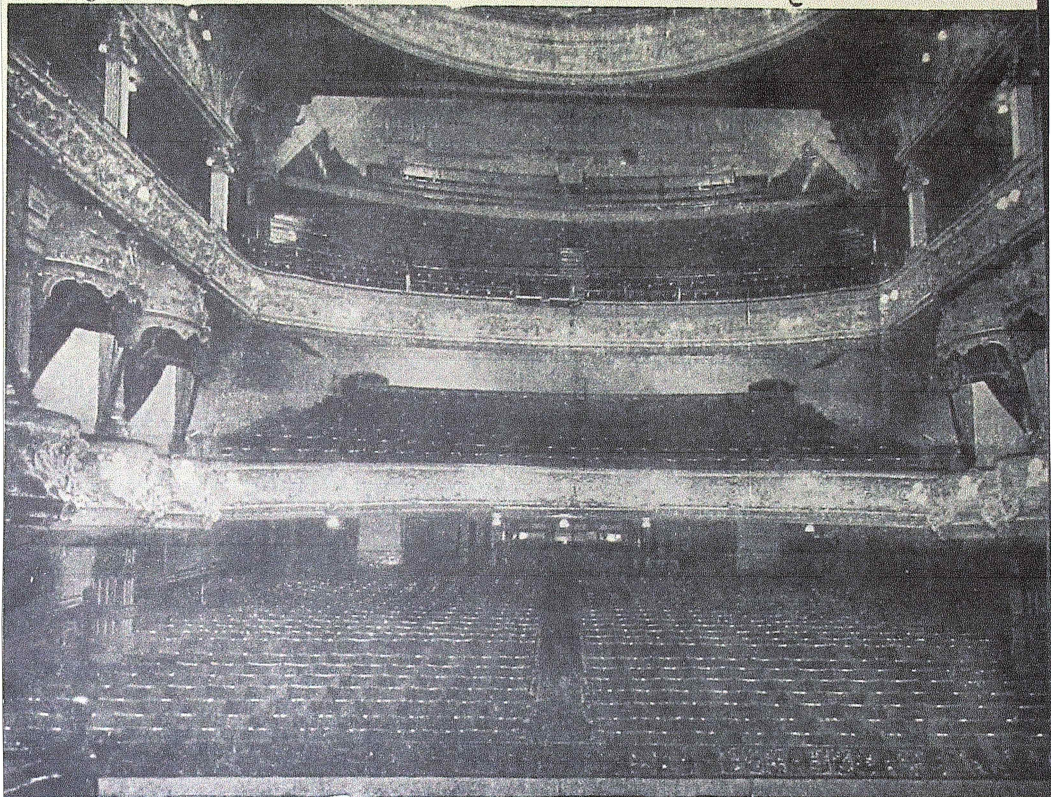
— ALSO —

CHUCK CONNORS : LUKE HALPIN

in

FLIPPER

A WONDERFUL FAMILY PROGRAMME



THE GAIETY THEATRE IN WHICH THE FESTIVAL IS BEING HELD

AWARD LIST :

1st — **THE " F. M. CUBBON " TROPHY**

(Valued 100 Guineas)

Presented by the Revd. F. M. CUBBON, Hon.C.F., D.C.

2nd — **" DICK CRAINE " CUP**

3rd — **" JACK LYNCH " CUP**

The following is the basis of marking which
will be used by the Adjudicator :

Acting	40
Production	35
Stage Presentation ..	10
Endeavour, Originality and Attainment ...	15

Adjudicator : MRS. MARGARET MARSHALL

The Adjudicator will comment on each performance immediately after
the termination of the play.

Final adjudication and announcement of marks on Saturday, May 23rd.

THE LITTLE HAT SHOP

with the LARGE SELECTION of

Smart Millinery

— and —

*DRESS SKIRTS : KNITWEAR
BLOUSES : GLOVES : SCARVES
HOSIERY : LINGERIE*

SUSAN GREEN

2 Finch Road, Douglas

AH! SEE CAINS . . .

before deciding on your house furnishings.

*You will be delighted with
our range of high-class . . .*

**Furniture, Carpets,
Furnishing Fabrics,
Bedding & Table Linen**

For VALUE, VARIETY and SERVICE . . .

R. C. CAIN,

LIMITED

42-50 DUKE STREET, DOUGLAS

Phone 4311/2

MONDAY, MAY 18th—

N.A.L.G.O. PLAYERS

present

“Watch it, Sailor!”

by PHILIP KING and FALKLAND L. CARY

— CAST —

(in order of appearance)

ALBERT TUFNELL, A.B. DAVID KANEEN
SHIRLEY HORNETT PAT TRANTER
DAPHNE PINK SYLVIA HORROX
CARNOUSTIE Blich, A.B. JOHN CASHEN
HENRY HORNETT BILL KELLY
EDIE HORNETT GLADYS KNEALE
EMMA HORNETT DENA LEATHER
MRS. LACK MOLLY BATEMAN
LIEUTENANT COMMANDER HARDCASTLE, R.N.R.
BILL VINCENT

Producer: MOLLY BATEMAN

Resident Stage Manager: GEORGE CRAINE

Stage Manager: TED NEWTON

Wardrobe Mistress: DOROTHY HALSALL

Entr-acte Music by MISS MAVIS KELLY

The action of the play passes in the living-room of the Hornets' home.

Time : THE PRESENT

ACT I—Late morning

ACT II—Five minutes later.

ACT III—Immediately following.

For *PERSONAL SERVICE*
and *SATISFACTION* try . . .

Felice's

CAFE and RESTAURANT

MORNING COFFEE : LUNCHEONS

GRILLS : TEAS : SNACKS

Open all day Thursday

10 Strand Street, Douglas, I.o.M.

Telephone: 1581

DEVEREAU . . . FOR FISH

A Smiling Boy
Was very frank
As he sat on
The river bank.

The Parson said
"No fish you'll win
With that small stick
And worm and pin."

The boy replied
"I've got a whim
To teach my little
Worm to swim."

"And as for fish
We always go
To Strand Street Shops
of DEVEREAU."

**MANX KIPPER CURERS
STRAND STREET SHOPS : DOUGLAS**

YOUR Parcel Post Orders receive IMMEDIATE ATTENTION

TUESDAY, MAY 19th—

GARGRAVE DRAMATIC SOCIETY

present

“The Shining Hour”

by KEITH WINTER

— CAST —

(in order of appearance)

JUDY LINDEN ELEANOR GRIMSHAW
HANNAH LINDEN AUDREY WATTS
HENRY LINDEN CHARLES IDESON
MICKY LINDEN MALCOLM SLATER
MARIELLA LINDEN ELIZABETH BULMER
DAVID LINDEN MALCOLM BROWN

Producer: JACK M. ABBOTT

Properties: ROWENA SHARP, WINIFRED ABBOTT

ACT I — The living-room of the Linden farm house in Yorkshire.

ACT II — Scene 1: The same; afternoon, about a week later.

Scene 2: The same; after supper, about a week later.

ACT III — The same; late afternoon a week later.

THE ADJUDICATOR . . .

MRS. MARGARET MARSHALL

L.R.A.M., L.G.S.M., A.D.B.,

known as she is in England, Scotland and Ireland for her sound adjudication and richly humorous comments, needs no introduction to many of the audience.

Those of us who are local have had the pleasure, on many occasions, of listening to her, with appreciation of her understanding of the achievements, and the difficulties, of the players she assesses.

Her very real desire to be of service to those interested in the Theatre is of enormous value and encouragement.

WEDNESDAY, MAY 20th—

THE SERVICE PLAYERS

present

“The Amorous Prawn”

by ANTHONY KIMMINS

— CAST —

(in order of appearance)

LADY FITZ-ADAM UNITY REES-JONES
MAJOR-GENERAL SIR HAMISH FITZ-ADAM,
K.B.E., C.B., D.S.O. JOHN STEVENSON
SUSIE TIDMARCH, W.R.A.C. SHIRLEY CURRIE
CORPORAL SIDNEY GREEN JACK HAMPSON
PRIVATE WILLIE MALTRIVERS GEOFFREY KELLY
PRIVATE ALBERT HUGGINS W. E. PYCRAFT
BIDDY O'HARA, W.R.A.C. PAULINE WARD
THE “PRAWN” (LORD VERNON) ERIC DAVIES
SAM GOULANSKY WYLIE McDOWELL
LARRY HOFFMAN DAVID HIGGINS
UNCLE JOE R. W. CRAINE

Producer: W. E. PYCRAFT

The action of the play passes in the living-room of “Glenmally House,”
Argyllshire, the Official Residence of the G.O.C. North-West District.

Time : THE PRESENT

ACT I—A June morning.

ACT II—An afternoon three weeks later.

ACT III—After dinner the same evening.

Your Holiday Requirements
at
Manx Co-operative Society
LIMITED

*BRANCHES IN EVERY DISTRICT for . . .
GROCERIES, PROVISIONS, BREAD, CONFECTIONERY
and MEAT*

VISIT OUR CENTRAL STORE . . .
DUKE STREET : DOUGLAS
SNACK BAR . . . AND WALK ROUND STORE

YOU SAVE WHEN YOU
GET IT AT
WOOLWORTH'S

F. W. Woolworth
AND Co. LIMITED

STRAND STREET
DOUGLAS

THURSDAY, MAY 21st—

THE WITHINGTON PLAYERS

present

“Billy Liar”

by KEITH WATERHOUSE and WILLIS HALL

— CAST —

(in order of appearance)

FLORENCE BOOTHROYD GLADYS TOMLINSON
GEOFFREY FISHER JAMES HANLON
ALICE FISHER FLORENCE DAMESICK
BILLY FISHER ALAN CLARKE
ARTHUR CRABTREE JOHN WHITE
BARBARA CLARE TURNER
RITA HELEN GRATRICK
LIZ BERYL LOMAS

The play produced by JOHN ALLDRIDGE

Stage Manager (for Withington Players): SUSAN LEDGER

The play is set in Stradhoughton, an industrial town in the North of England :: Today

ACT I — Saturday morning.

ACT II — Afternoon of the same day.

ACT III — Later the same evening.

PREVIOUS RESULTS

- 1950 1—Thirteen Players of Bristol in "Canaries Sometimes Sing".
2—Withington Players, of Manchester, in "Gaslight".
3—Thespian Players, Tredegar, in "The Guinea Pig".
- 1951 1—The Phoenix Theatre Group, Dublin, in "Michaelmas Eve".
2—The Thirteen Players of Bristol in "Springtime for Henry".
3—Withington Players, Manchester, in "Granite".
- 1952 1—The Phoenix Theatre Group, Dublin, in "Lovers' Meeting".
2—Withington Players, Manchester, in "Payment Deferred".
3—Theatre Arts Club, Edinburgh, in "Mr. Bolfray".
- 1953 1—Withington Players, Manchester, in "The Tudor Wench".
2—Theatre Arts Club, Edinburgh, in "Mr. Gillie".
3—The Phoenix Theatre Group, Dublin, in "Juno and the Paycock".
- 1954 1—The Thirteen Players of Bristol, in "Candlelight".
2—The Service Players, Douglas, in "Tovarich".
3—The Theatre Arts Club, Edinburgh, in "Rain".
- Joint { 3—The British Legion Players, Douglas, in "Arsenic and Old Lace".
- 1955 1—The Thirteen Players of Bristol in "Frolic in April".
2—Theatre Arts Club, Edinburgh, in "The Hasty Heart".
3—London Irish Players in "The Heiress".
- 1956 1—Withington Players, Manchester, in "The Gentle Arm".
2—The Tudor Players, Manchester, in "The Love of Four Colonels".
3—Theatre Arts Club, Edinburgh, in "The Anatomist".
- 1957 1—Theatre One, Edinburgh, in "Dark of the Moon".
2—Withington Players, Manchester, in "The Secret Tent".
3—Theatre Arts Club, Edinburgh, in "Dr. Angelus".
- 1958 1—Theatre One, Edinburgh, in "Don't Listen Ladies".
2—Withington Players, Manchester, in "Person Unknown".
3—Theatre Arts Club, Edinburgh, in "My Three Angels".
- 1959 1—Theatre Arts Club, Edinburgh, in "All My Sons".
2—Kings College, London, in "The Crucible".
3—Dublin Theatre Unit in "Of Mice and Men".
- 1960 1—Theatre Arts Club, Edinburgh, in "Diary of Anne Frank".
2—Metro Drama Group, Dublin, in "Tolka Row".
3—St. Mary's Players, Douglas, in "Teahouse of the August Moon".
- 1961 1—Cairde Fail, Dublin, in "Twilight of a Warrior".
2—Metro Drama Group, Dublin, in "The Bugle in the Blood".
3—Masque Players, Liverpool, in "The Glass Menagerie".
- 1962 1—Rushen Amateur Dramatic Society in "Ladies in Retirement".
2—Tudor Players, Manchester, in "Druid's Rest".
3—Metro Drama Group, Dublin, in "Lovers Meeting".
- 1963 1—Tudor Players, Manchester, in "Love and Lunacy".
2—St. Mary's Players, Douglas, in "Mrs. Gibbon's Boys".
3—Metro Drama Group, Dublin, in "Autumn Fire".

FRIDAY, MAY 22nd—

THE TUDOR PLAYERS

present

“Winter Journey”

by CLIFFORD ODETS

— CAST —

(in order of appearance)

BERNI DODD, Stage Director IAN PARRY
LARRY, Stage Manager GERARD O'DONOGHUE
PHIL COOK, Producer MAURICE CLARKE
PAUL UNGER, Playwright PETER LEDWITH
NANCY STODDARD, an Actress IRENE MURPHY
FRANK ELGIN, an Actor RONALD ARSCOTT
GEORGIE ELGIN, Frank's Wife QUEENIE PARRY
RALPH, Frank's Dresser DAVID ROBINSON

Produced by MURIEL GERRARD

Stage Manager: DAVID ROBINSON

Assistant Stage Manager: MAISIE WHITFIELD

Property Mistress: EDITH OAKES

— ACT I —

- Scene 1: The stage of a New York theatre—in the morning.
Scene 2: The Elgins furnished room in mid Manhattan—late the same day.
Scene 3: The stage, ten days later—late at night.
Scene 4: Elgins room, a week later—early in the morning.
Scene 5: A dressing room in a Boston theatre a week later—after midnight.

— ACT II —

- Scene 1: Boston dressing room a few nights later—after midnight.
Scene 2: The same, following day—early afternoon.
Scene 3: Dressing room in a New York theatre, some weeks later—in the evening.

SATURDAY, MAY 23rd—

THE LEGION PLAYERS

present

“Book of the Month”

by BASIL THOMAS

— CAST —

(in order of appearance)

EDWARD HALLIDAY, M.P. MORRIS KEWLEY
JOANNA, His Wife MOLLIE GILL
MARCIA WENTWORTH, His Sister FRANCES ISAAC
BETTY (Bim) HALLIDAY, Their Daughter ... MARIAN NORRIS
DORIS CLAIRE EVANS
COL. HOWARD BARNES-BRADLEY GORDON QUIRK
DOCTOR IAN MACLURE ERIC HANSON
NICHOLAS BARNES-BRADLEY COLIN JENKINS

The action of the play takes place at Edward Halliday's house,
near Cheltenham.

ACT I— Scene 1: A Sunday morning in August.

Scene 2: “Bare Bosom'd Night” by Betty Halliday.

ACT II— Scene 1: Later the same Sunday morning.

Scene 2: The following Monday evening.

Next Week's Great Cinema Attractions

STRAND STREET

Telephone: 14

PICTURE HOUSE

JAMES ROBERTSON JUSTICE
STANLEY BAKER : LESLIE PHILLIPS

in

FATHER CAME TOO

IT'S A BRITISH COMEDY RIOT!

VICTORIA STREET

Telephone 355

REGAL

MONDAY TO WEDNESDAY :

IAN HENDRY : ALAN BADEL

in

Children of the Damned

A TERRIFIC THRILLER!

THURSDAY TO SATURDAY :

RICHARD (DR. KILDARE) CHAMBERLAIN

in

The Charge is Murder

"KILDARE" IN A NEW ROLE . . .

. . . SUSPENSE AND EXCITEMENT!



TELEPHONE: DOUGLAS 2334

OKELL & SON LTD.

FALCON BREWERY - DOUGLAS - ISLE OF MAN