

**Gaiety
Theatre**

**DOUGLAS
ISLE OF MAN**

Proprietors : PALACE ENTERTAINMENTS LTD.
General Manager : R. Wilkinson

15th APRIL to 20th APRIL, 1968.

**EIGHTEENTH
DRAMA
FESTIVAL**

**of FULL
LENGTH
PLAYS**

===== NIGHTLY at 7-30 p.m. =====

PRESENTATION OF THE "F. M. CUBBON" TROPHY,
THE "DICK CRAINE" CUP, THE "JACK LYNCH" CUP
ON SATURDAY, 20TH APRIL, 1968

SOUVENIR PROGRAMME : ONE SHILLING

Palace Hotel & Casino

GAMING — ENTERTAINMENT — RESTAURANT

OPEN DAILY FOR LUNCHEONS & DINNERS

AVAILABLE FOR WEDDING RECEPTIONS
ANNUAL DINNERS, PRIVATE DINNER PARTIES

DINNER DANCE

Saturday from 8 p.m. (25/-)

CABARET — NIGHTLY

CHRISTINE EVANS

(Glamorous Singing Star)

DANCING TO

THE RAY NORMAN COMBO

Delightful Food — A Wonderful Evenings Entertainment

ENTERTAINMENT LOUNGE

CABARET — TWICE NIGHTLY

from Sunday, 14th April

“ THE GAYTONES ”

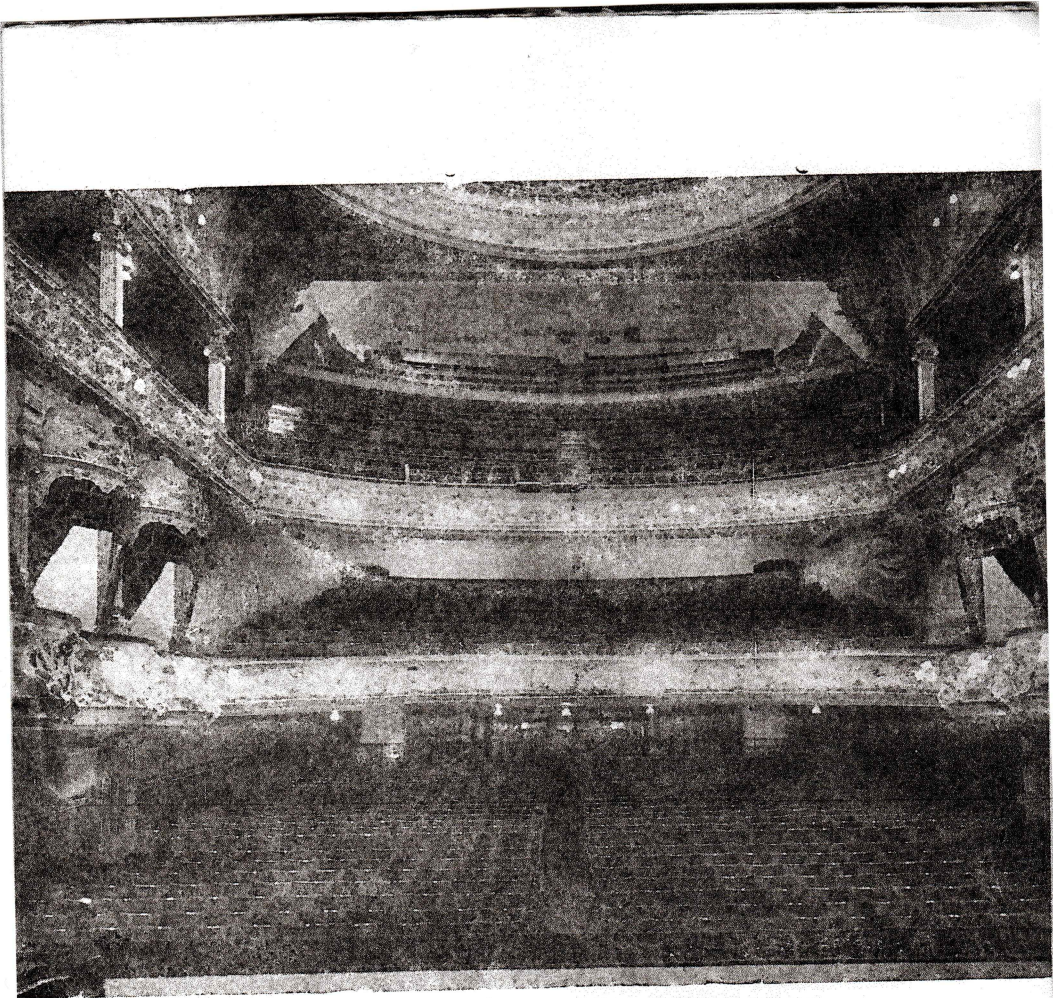
(Four Girls in Harmony)

MUSIC BY

THE RAY NORMAN COMBO

MEMBERS ONLY TO THE CASINO AND ENTERTAINMENT
LOUNGE

(Immediate Membership at the Door)



THE GAIETY THEATRE IN WHICH THE FESTIVAL IS BEING HELD

AWARD LIST :

1st — THE " F. M. CUBBON " TROPHY
(Valued 100 Guineas)

Presented by the Revd. F. M. Cubbon, Hon.C.F., D.C.

2nd — " DICK CRAINE " CUP

3rd — " JACK LYNCH " CUP

The following is the basis of marking which will be used by the Adjudicator.

Acting	40
Production	35
Stage Presentation	10
Endeavour, Originality and Attainment ...	15

Adjudicator : MR. WILLIAM MARCH

The Adjudicator will comment on each performance immediately after the termination of the play

Final adjudication and announcement of marks on Saturday, April 20th.

MONDAY, APRIL 15th—

LITHERLAND DRAMA GROUP

present

“The Importance
of Being Earnest’

by OSCAR WILDE

— CAST —

JOHN WORTHING, J.P. ALAN BIRD
ALGERNON MONCRIEFF DAVID HOCKLEY
REV. CANON CHASUBLE, D.D. WILLIAM DRURY
LANE (Manservant) GERRY DENTON
LADY BRACKNELL DORIS COWELL
HON. GWENDOLEN FAIRFAX IRENE WOLFENDEN
CECILY CARDEW LINDA NODWELL
MISS PRISM JOYCE PARRY
MERRIMAN (Maid) PATRICIA LAVERTY
MANSERVANT PETER CONNOR

Producer: JOHN MORRIS

Prompter: ANN RIETDYK

Act 1 Algernon Moncrieff's Flat.

Act 2 The Garden at the Manor House

Act 3 Conservatory at the Manor House

The Litherland Drama Group has specialised in the production of unusual plays, especially those of the modern French Dramatists. They have presented all the major plays of Ionesco, Genet and Bernanos. They have also presented works by Labiche, Marivaux and the Spanish Jacinto Benavente. “The Importance of being Earnest” is one of their few incursions into British Drama and is designed to make a contrast with the other works they are presenting this season by John Arden and Labiche.

BERTIE CRAINE

THE LIL PORK SHOP

64 STRAND STREET : DOUGLAS

Telephone : Douglas 5908

We may be changing our address but we're certainly not
changing our quality
That's "The Importance of Being Earnest"

FOR AN EVENING OF RELAXATION AND CHEER—

Visit the

DOG'S HOME

AND PETER McALEER

DRUMGOLD STREET : DOUGLAS

NOW IS THE TIME TO BUY YOUR SPRING SHOES
WE HAVE THE MOST WONDERFUL COLLECTION OF
K. GOLD CROSS CLARKS and LOTUS —

LET

Kermode & Bignell

1-3 CASTLE STREET : DOUGLAS

PUT SPRING AT YOUR FEET NOW

TUESDAY, APRIL 16th—

THE RAVEN PLAYERS

present

“Busybody”

A Comedy Thriller

by JACK POPPLEWELL

— CAST —

(In order of appearance)

MRS PIPER MARJORIE WILSON
RICHARD MARSHALL TONY BROMILEY
DETECTIVE CONSTABLE GODDARD ORRY COSTAIN
DETECTIVE SUPERINTENDENT BAXTER
STAN KERRISON
CLAIRE MARSHALL PAT MORRIS
MARIAN SELBY PATSY STARKEY
ROBERT WESTERBY TOM KIND
VICKIE REYNOLDS SUE BROUGHTON

Directed by OLIVE KERRISON

The action of the play takes place in Richard Marshall's private office,
high up in a block of offices in London.

Act I Scene 1—Night.

Scene 2—Fifteen minutes later.

Scene 3—The following morning.

Act II Six o'clock the following evening.

Act III Four-thirty the following afternoon.

Stage Manager: CAROL CLARK

Assisted by A. BRACEGIRDLE

Properties: J. MURRAY and MARGARET CORLETT

Make-up: A. BRACEGIRDLE

Prompt: NANCY GAFFIKIN

Wm. QUIRK & SONS LTD.

FOR THE BEST BREAD

CONFECTIONERY, WEDDING AND CELEBRATION CAKES

Telephone : Douglas 3764/5

DEVEREAU

THE FISH SHOP : STRAND STREET

Tonight I'll make a tasty dish
To town I'll go and buy some fish
It's best I think — In fact I know —
To shop for fish with DEVEREAU.

*IF YOU WANT TO GET A-HEAD — GET A HAT
BUT GET IT AT*

Fred Bridson & Son

THE HAT CENTRE : 87 STRAND STREET

LARGEST SELECTION ON THE ISLAND

(Phone 21373)

M^{IC}_{AC} Boutique

NELSON STREET : DOUGLAS : ISLE OF MAN

Telephone : Douglas 5450

WEDNESDAY, APRIL 17th—

‘ Entertainment with a Difference ’

IAN and QUEENIE PARRY

present

“ Shakespeare
Without Tears ”

Excerpts from a variety of his works

— INTERVAL —

“ We Propose ”

A selection of proposal scenes from various plays

THE ADJUDICATOR. . . .
MR. WILLIAM MARCH.

is the Chief of the Scottish Drama League Adjudicators, introduced to us by last year's Adjudicator, Mrs. Margaret Marshall.

On his first visit to the Island he looks forward to this Festival with keen interest.

We on our part look forward to his Adjudications.

ISLE OF MAN ARTS COUNCIL

presents

"Ballet for All"

with DANCERS of the ROYAL BALLET

EVENING PERFORMANCES—

Wednesday, November 13th and
Friday, November 15th, 1968

MATINEE PERFORMANCE—

Thursday, November 14th, 1968

Provisional programme to include —

"TWO COPPELIAS"

The humour and tragedy behind a much loved ballet

"THE WORLD OF GISELLE"

about the romantic ballets "La Sylphide" and "Giselle"

THURSDAY, APRIL 18th—

THE TUDOR PLAYERS

present

“The Castle
of Deception”

A Museum Piece in Bogus Verse
by PETER PHILIP

— CAST —

GANTZ SINCLAIR NEWTON
PETROV JOHN BLACKBURN
BUTLER MAURICE CLARKE
STELLA EDITH OAKES
BENN RONALD ARSCOTT
VANESSA SHEELAGH O'CONNOR

The play takes place in a room in Benn's castle.

Act I Early evening.

Act II Morning, three days later.

Act III Afternoon on the following day.

The play directed by NAN NUTTALL

Setting designed by ROY GRAHAM

Stage Manager: ROY GRAHAM

Lighting: STUART BERESFORD

Properties: KATHLEEN ARUNDALE

Sound: ROWLAND MATTHEWS

*The Island's Leading
Hire and Drive Garage . . .*

: OVER 175 CARS AVAILABLE :

ATHOL GARAGE(1945)LTD.

**HILL STREET ; DOUGLAS
ISLE OF MAN**

Telephone : Douglas 4428

Felice's

"The sign of good food"

CAFE RESTAURANT

10 STRAND STREET, DOUGLAS, I.o.M.

Nr. Marks and Spencers Telephone Douglas 21581

For your morning coffee, luncheons,
afternoon teas and grills

OPEN ALL YEAR ROUND

**MILK BAR 8 Castle Street, DOUGLAS
SUPPER BAR, 22 Castle Street, DOUGLAS**

FRIDAY, APRIL 19th—

THE STUDIO PLAYERS

of RADSTOCK (Somerset)

present

“ Play With a Tiger ”

by DORIS LESSING

— CAST —

(in order of appearance)

ANNA FREEMAN	SHIRLEY MOSLEY
TOM LATIMAR	DONALD JAMES
MARY JACKSON	ANNE McDOWELL
HARRY PAYNE	FRED LINTERN
JANET STEVENS	MARION TUCKER
DAVE MILLER	BOB GOODING

Stage Manager : COLIN SHORE

Produced by BOB GOODING

The characters in this play are rootless and declassed. They each search for fulfilment, grasping clumsily at their own salvations and treading upon each other in the process. They are unable to come to terms with the world outside or with themselves.

The setting is stark and simple for the play relies upon its style and language for its effect.

“Play With a Tiger” was first produced at the Comedy Theatre, London on March 22nd, 1962.

SATURDAY, APRIL 20th—

THE FYLDE COAST PLAYERS

present

“Charlie’s Aunt”

by BRANDON THOMAS

— CAST —

COLONEL SIR FRANCIS CHESNEY, Bart.
(Late Indian Service) JOHN GITTUS
STEPHEN SPETTIGUE (Solicitor, Oxford) ... GERRY HUDSON
JACK CHESNEY ALAN KING
CHARLES WYKEHAM } Undergraduates .. ROLAND BARKER
LORD FANCOURT } at St. Olde’s
BABBERLEY } College, Oxford FRANK HUNT
BRASSETT (A College Scout) MAX SAWER
DONNA LUCIA d’ALVADOREZ (from Brazil)
JOAN RICHARDSON
KITTY VERDUN (Spettigue’s Ward) ... MAUREEN CALVELEY
AMY SPETTIGUE (Spettigue’s Niece) MAGGIE DAY
ELA DELAHAY (An Orphan) LYNN BARLOW

Commemoration Week, Oxford, 1892

Act I Jack Chesney’s Rooms in College (Morning)
Act II Garden outside Jack Chesney’s Rooms (Afternoon)
Act III Drawing Room at Spettigue’s House (Evening)

Produced by DORIS CROCKER

Decor and Costumes: H. TOWN

Prompt: D. CLARK

Stage Manager: D. POWELL

PREVIOUS RESULTS

- 1950 1—Thirteen Players of Bristol in "Canaries Sometimes Sing"
 2—Withington Players, of Manchester, in "Gaslight."
 3—Thespian Players, Tredegar, in "The Guinea Pig."
- 1951 1—The Phoenix Theatre Group Dublin, in "Michaelmas Eve."
 2—The Thirteen Players of Bristol in "Springtime for Henry."
 3—Withington Players, Manchester, in "Granite."
- 1952 1—The Phoenix Theatre Group, Dublin, in "Lovers' Meeting."
 2—Withington Players, Manchester, in "Payment Deferred."
 3—Theatre Arts Club, Edinburgh, in "Mr. Bolfry."
- 1953 1—Withington Players, Manchester, in "The Tudor Wench."
 2—Theatre Arts Club, Edinburgh, in "Mr. Gillie."
 3—The Phoenix Theatre Group, Dublin, in "Juno and the Paycock."
- 1954 1—The Thirteen Players of Bristol, in "Candlelight."
 2—The Service Players, Douglas, in "Tovarich."
 3—The Theatre Arts Club, Edinburgh, in "Rain."
- Joint { 3—The British Legion Players, Douglas, in "Arsenic and Old Lace"
- 1955 1—The Thirteen Players of Bristol, in "Frolic in April."
 2—Theatre Arts Club, Edinburgh, in "The Hasty Heart."
 3—London Irish Players in "The Heiress."
- 1956 1—Withington Players, Manchester, in "The Gentle Arm."
 2—The Tudor Players, Manchester, in "The Love of Four Colonels"
 3—Theatre Arts Club, Edinburgh, in "The Anatomist."
- 1957 1—Theatre One, Edinburgh, in "Dark of the Moon."
 2—Withington Players, Manchester, in "The Secret Tent."
 3—Theatre Arts Club, Edinburgh, in "Dr. Angelus."
- 1958 1—Theatre One, Edinburgh, in "Don't Listen Ladies."
 2—Withington Players, Manchester, in "Person Unknown."
 3—Theatre Arts Club, Edinburgh, in "My Three Angels."
- 1959 1—Theatre Arts Club, Edinburgh, in "All My Sons."
 2—Kings College, London, in "The Crucible."
 3—Dublin Theatre Unit in "Of Mice and Men."
- 1960 1—Theatre Arts Club, Edinburgh, in "Diary of Anne Frank."
 2—Metro Drama Group, Dublin, in "Tolka Row."
 3—St. Mary's Players, Douglas, in "Teahouse of the August Moon."
- 1961 1—Cairde Fail, Dublin, in "Twilight of a Warrior."
 2—Metro Drama Group, Dublin, in "The Bugle in the Blood."
 3—Masque Players, Liverpool, in "The Glass Menagerie."
- 1962 1—Rushen Amateur Dramatic Society in "Ladies in Retirement."
 2—Tudor Players, Manchester, in "Druid's Rest."
 3—Metro Drama Group, Dublin, in "Lovers Meeting."
- 1963 1—Tudor Players, Manchester, in "Love and Lunacy."
 2—St. Mary's Players, Douglas, in "Mrs. Gibbon's Boys."
 3—Metro Drama Group, Dublin, in "Autumn Fire."
- 1964 1—The Withington Players, Manchester, in "Billy Liar."
 2—The Service Players, Douglas, in "The Amorous Prawn."
 3—The Legion Players, Douglas, in "Book of the Month."
- 1965 1—The Fylde Coast Players, St. Annes, in "The Rehearsal."
 2—The Sundrive Players, Dublin, in "A Doll's House."
 3—The Legion Players, Douglas, in "The Secret Tent."
- 1967 1—The Fylde Coast Players, St. Annes in "Fallen Angels."
 2—Service Players, Douglas in "Pools Paradise."
 3—Legion Players, Douglas in "Murder Mistaken."

Palace Hotel & Casino

IT'S TROPICAL!

IT'S COLOURFUL!

It's the

**Hawaiian
Bar**

(adjoining the Casino)

*RELAX IN THE UNIQUE SOUTH SEAS ATMOSPHERE
— YOUR FAVOURITE WINES, SPIRITS AND ALES ON
DRAUGHT OR IN BOTTLE AT NORMAL BAR PRICES.*

Plus COLOUR T.V.

**THE HAWAIIAN BAR is Open to the
Public with no membership formalities
— and no charge!**



THE ISLAND'S
LEADING ALES



OKELL & SON LTD.

FALCON BREWERY

DOUGLAS

ISLE OF MAN

Telephone : DOUGLAS 3034/5

VICTORIA PRESS LIMITED, DOUGLAS.