

GAIETY THEATRE
Douglas, Isle of Man

1st - 8th APRIL, 1972

(excluding Thursday, 6th April)

Twenty-second

Drama Festival

•
NIGHTLY at 7.30

•
PRESENTATION OF AWARDS

by

The Rev. F. M. CUBBON, Hon.C.F., D.C.

on

SATURDAY, 8th APRIL

SP.
COMPLETE PROGRAMME 10p each

AWARD LIST
FOR 3 ACT PLAYS

1st — The "F. M. CUBBON" TROPHY

Presented by the Rev. F. M. Cubbon, Hon. C.F., D.C.

2nd — The "DICK CRAINE" CUP

3rd — The "JACK LYNCH" CUP

*The following is the basis of marking which will be used by
the Adjudicator*

Acting	40
Production	35
Stage Presentation	10
Endeavour, originality and attainment	15

*Adjudicator: Mrs. MARGARET MARSHALL
L.R.A.M. (Eloc.), L.G.S.M. (Eloc.), A.D.B.*

AWARDS FOR SOLO and OTHER ENTRIES

1. Dramatic Interpretation, 18 years and over.
"The Sylvia Bailey Trophy"
2. Dramatic Duologue, 18 years and over.
"The George Higgins Cup"
3. Dramatic Interpretation, under 18 years.
"The Olga Cowell Award"
4. Dramatic Duologue, under 18 years.
"The Bert Stephens Award"
5. Excerpts from a Musical Play for 2-6 persons.
"The Mollie Corkill Award"

*The Adjudicator will comment on each performance immediately
after the termination of the play*

"The Vanda Lambert Award"
for most outstanding individual performance of the week.

"The June Edge Cup"
for most promising performance under 21 years

*Final Adjudication and announcement of marks on
SATURDAY, 8th APRIL*

Saturday

1st April

THEATRE ONE, THORNTON-CLEVELEYS

A DELICATE BALANCE

By EDWARD ALBEE

CAST

AGNES, a handsome woman
in her late fifties CHRISTINE BARLOW
TOBIAS, her husband, a few years older ... NORMAN PERRY
CLAIRE, Agnes' sister, several years younger PAT MARKHAM
JULIA, Agnes' and Tobias' daughter,
36, angular JENNIFER TOLSON
EDNA } *very much like* MARJORIE HUDSON
HARRY } *Agnes and Tobias* PETER VERITY

THE SCENE

The living room of a large and well appointed suburban house
Time — the present.

ACT ONE

Friday Night

ACT TWO

Scene 1—Early Saturday Evening

Scene 2—Later that Night

ACT THREE

Early Sunday Morning

**MANX
AMATEUR DRAMATIC
FEDERATION**

Patron : The Rev. F. M. CUBBON, Hon.C.F., D.C.

President : Mrs. OLGA COWELL, O.B.E.

Vice-Presidents :

Mesdames : D. LYNCH, K. COWIN, M.H.K.,
T. FARGHER and J. BRILL ;

Messrs : J. BOLES and T. McEVOY

Chairman : Mrs. MOLLIE CORKILL

Secretary : Mrs. JENNIFER HALL

Treasurer : Mr. DICK CRAINE

Press Officer : Mr. JACK HAMPSON



Chez - Elle

Fashion House

26 PROSPECT HILL

Douglas

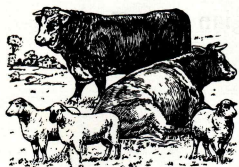
Tel. 21900

Specialists in—

**Ladies' Gowns, Coats, Millinery, Furs,
Cocktail Wear and Materials**

Personal Attention—

Mrs. L. CAIN and Mrs. E. CORKAN



High Class Meat Purveyors

John H. Hampson & Son

8 CENTRAL DRIVE

ONCHAN : ISLE OF MAN

Telephone : DOUGLAS 3869

Monday

3rd April

LITHERLAND DRAMA GROUP

WHEN WE DEAD WAKE

By HENRIK IBSEN

Cast in order of appearance :

PROFESSOR ARNOLD RUBEK, a sculptor ALAN BIRD
MAIA RUBEK, his wife LYNDIA NODWELL
THE MANAGER, at the Spa PETER DYSON
SQUIRE ULFHEIM DAVID HOCKLEY
A LADY TRAVELLER IRENE WOLFENDEN
A NUN LAURA SLATER

ACT ONE

The Grounds of an Hotel in a Norwegian Spa Town

Interval

ACT TWO

A Hillside above the Spa

Interval

ACT THREE

On the Mountain

Producer : John Morris
Properties : Ann Rietdyk
Stage Manager : Lane Drury
Translator : Peter Watts

PREVIOUS RESULTS

- 1950 1—Thirteen Players of Bristol in "Canaries Sometimes Sing"
2—Withington Players of Manchester in "Gaslight."
3—Thespian Players, Tredegar, in "The Guinea Pig."
- 1951 1—The Phoenix Theatre Group Dublin, in "Michaelmas Eve."
2—The Thirteen Players of Bristol in "Springtime for Henry."
3—Withington Players, Manchester, in "Granite."
- 1952 1—The Phoenix Theatre Group, Dublin, in "Lovers' Meeting."
2—Withington Players, Manchester, in "Payment Deferred."
3—Theatre Arts Club, Edinburgh, in "Mr. Bolfry."
- 1953 1—Withington Players, Manchester, in "The Tudor Wench."
2—Theatre Arts Club, Edinburgh, in "Mr. Gillie."
3—The Phoenix Theatre Group, Dublin, "Juno and the Paycock."
- 1954 1—The Thirteen Players of Bristol in "Candlelight."
2—The Service Players, of Douglas, in "Tovarich."
3—The Theatre Arts Club, Edinburgh, in "Rain."
- Joint 3—The British Legion Players, Douglas, "Arsenic and Old Lace."
- 1955 1—The Thirteen Players of Bristol, in "Frolic in April."
2—Theatre Arts Club, Edinburgh, in "The Hasty Heart."
3—London Irish Players, in "The Heiress."
- 1956 1—Withington Players, Manchester, in "The Gentle Arm."
2—The Tudor Players, Manchester "The Love of Four Colonels."
3—Theatre Arts Club, Edinburgh, in "The Anatomist."
- 1957 1—Theatre One, Edinburgh, in "Dark of the Moon."
2—Withington Players, Manchester, in "The Secret Tent."
3—Theatre Arts Club, Edinburgh, in "Dr. Angelus."
- 1958 1—Theatre One, Edinburgh, in "Don't Listen Ladies."
2—Withington Players, Manchester, in "Person Unknown."
3—Theatre Arts Club, Edinburgh, in "My Three Angels."
- 1959 1—Theatre Arts Club, Edinburgh, in "All My Sons."
2—Kings College, London, in "The Crucible."
3—Dublin Theatre Unit, in "Of Mice and Men."
- 1960 1—Theatre Arts Club, Edinburgh, in "Diary of Anne Frank."
2—Metro Drama Group, Dublin, in "Tolka Row."
3—St. Mary's Players, Douglas, "Teahouse of the Agust Moon."
- 1961 1—Cairde Fail, Dublin, in "Twilight of a Warrior."
2—Metro Drama Group, Dublin, in "The Bugle in the Blood."
3—Masque Players, Liverpool in "The Glass Menagerie."
- 1962 1—Rushen Amateur Dramatic Society, in "Ladies in Retirement."
2—Tudor Players, Manchester, in "Druid's Rest."
3—Metro Drama Group, Dublin, in "Lovers Meeting."
- 1963 1—Tudor Players, Manchester, in "Love and Lunacy."
2—St. Mary's Players, Douglas, in "Mrs. Gibbon's Boys."
3—Metro Drama Group, Dublin, in "Autumn Fire."
- 1964 1—The Withington Players, Manchester, in "Billy Liar."
2—The Service Players, Douglas, in "The Amorous Prawn."
3—The Legion Players, Douglas, in "Book of the Month."
- 1965 1—The Fylde Coast Players, St. Annes, in "The Rehearsal."
2—The Sundrive Players, Dublin, in "A Doll's House."
3—The Legion Players, Douglas, in "The Secret Tent."
- 1967 1—The Fylde Coast Players, St. Annes, in "Fallen Angels."
2—Service Players, Douglas, in "Pools Paradise."
3—Legion Players, Douglas, in "Murder Mistaken."
- 1968 1—The Tudor Players, Manchester, in "The Castle of Deception."
2—The Studio Players, Radstock, in "Play with a Tiger."
3—The Fylde Coast Players, in "Charlie's Aunt."
- 1969 1—Litherland Drama Group, in "Oedipus Rex."
2—The Tudor Players Manchester, in "Say Who Are You!"
3—The Raven Players, Ramsey, in "A Public Mischief."
- 1970 1—The Green Room Players, Blackpool, "Spring and Port Wine."
2—The Tudor Players, Manchester, in "Song at Twilight."
3—Litherland Drama Group in "Bacchae."
- 1971 1—The Legion Players, Douglas, in "Angels in Love."
2—The Green Room Players, Blackpool, "Come Blow Your Horn."
3—The Tudor Players, Manchester, in "Halfway up the Tree."

Tuesday

4th April

Film Show

"BECKET"

Starring

**RICHARD
BURTON**



**PETER
O'TOOLE**

Commencing at 7 p.m.

GAIETY THEATRE

Wednesday 5th April

**An Evening of Dramatic Interpretation
Dramatic Duologues and a
New Competition . . .**

AN EXCERPT FROM A MUSICAL PLAY

1. Dramatic Interpretation, 18 years and over for the *Sylvia Bailey Trophy*. Time not exceeding 5 minutes.
2. Dramatic Duologue, 18 years and over, for the *George Higgins Cup*. Time not exceeding 10 minutes.
3. Dramatic Interpretation, under 18 years, for the *Olga Cowell Cup*. Time not exceeding 5 minutes.
4. Dramatic Duologue, under 18 years, for the *Bert Stephens Cup*. Time not exceeding 10 minutes.
5. Excerpt from a Musical Play for 2 - 6 persons, for the *Mollie Corkill Award*. Not less than 10 minutes — not more than 15 minutes. To be judged on its Dramatic Effect.

Due to popular demand entries are subject to limitations and should be made as soon as possible.

Entries taken in strict rotation.

— Established over 40 years —

DEAN'S

of Regent Street

Ladies & Gents Hairdressers

REGENT STREET
DOUGLAS : ISLE OF MAN

Telephone : DOUGLAS 21118

The Married Mullet

The Mullet blushed
A rosy red
And to the silver
Hake he said :

“I've just been wed
To Polly Plaice,
So spare the blushes
On my face.”

The Hake said :
“Mullet, if you're wise
You'll guard against
A quick surprise.

Or else your wife
And you will go
To Strand Street shop
Of DEVEREAU.”

DEVEREAU'S
For POULTRY and FISH

Strand Street Shops : Douglas

Thursday, 6th April

There will be no dramatic performance on Thursday, 6th April, as on that evening the I.O.M. Literary Society have arranged for the annual "Olive Lamming Memorial Lecture" to be given at the Villa Marina Reading Room, at 8 p.m.

The Lecturer is a Manxman, the distinguished Author, and Critic, Professor Frank Kermode, of University College, London. Professor Kermode will talk about "The End of the Novel."

The Literary Society trust they can depend on the support of the general public at this Lecture.

Admission — 15p

Adjudicator : Mrs. Margaret Marshall

Mrs. Margaret Marshall is a member of the Guild of Adjudicators. She is a teacher of Speech and Drama, and lectured at Loughborough College for a number of years.

She now has the pleasure of seeing some of her pupils, men and women, starring on stage and on television.

Margaret Marshall is a practical Producer, and has done a great deal of acting.

This is the secret of her success as an Adjudicator of Amateur Theatre. Not only does she understand what is possible . . . and what is impossible, she also knows how far the 'impossible' on the Amateur Stage can be made to appear possible, and many a young — and not so — young actor has benefited by her clever and constructive criticism.

Welcome, Mrs. Margaret Marshall

The only Bakery using **Pure Unbleached Flour**
for your daily bread—

A. G. WINKLE

(F.Inst.B.B.) **WINKLE'S BAKERIES LTD.**

Pastrycooks and Confectioners

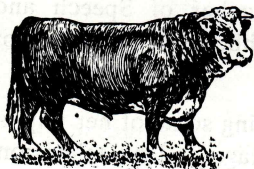
Wedding, Birthday and Christening Cakes

East Foxdale and

Bathurst St. : Douglas : I.o.M.

Tel. Marown 336

All orders receive personal attention



*High Class Family Butchers
and Poulterers*

W. & D. MOORCROFT

57 CIRCULAR ROAD

DOUGLAS

Tel. Douglas 22537

Deliveries Daily

Friday

7th April

TUDOR PLAYERS, MANCHESTER

RELATIVELY SPEAKING

A Comedy by **ALAN AYCKBOURN**

GREG **JEFF BRAILSFORD**

GINNY **SHIRLEY SOUTHERN**

PHILIP **RONALD ARSCOTT**

SHEILA **EDITH OAKES**

Directed by **Betty Marshall**

—————
The action of the play takes place during a summer weekend in
London and the country, in 1967.

—————
Stage Manager : **Maurice Clarke**

A.S.M. : **Hazel Arscott**

Properties : **Doreen Johnson**

Saturday

8th April

GREEN ROOM PLAYERS, BLACKPOOL

THEY DON'T GROW ON TREES

By RONALD MILLAR

CAST

RUTH LENNOX STEPHANIE ASHTON
JESSIE MACFARLANE DINAH SPIERS
ROGER LENNOX TERRY GILLOW
MILCUZKI JAMES SPIERS
MRS. DAWKINS CHERRY WILLIAMS
BRIGID O'COONEY JOY BANKS
RUPERT ANSTRUTHER IAN ROWE
MRS. VAN BOVEN JOY BANKS
DELLAROSA PARAVICI JOY BANKS
MISS MINTER MARIE MUSCHAMP
DICK TYLDESLEY PARK
CHARLIE GARY DOOLEY
MARY THORNTON AMANDA WANDE
STEPHENS JAMES SPIERS
ELLIS TYLDESLEY PARK
BULLOCH GARY DOOLEY
MRS CAMPBELL-SCULLY JOY BANKS
MRS. ZUCKMEYER MARIE MUSCHAMP
MR. ZUCKMEYER JAMES SPIERS

Directed by John Whittle

Stage Manager : Tony Coombs

ACTION OF PLAY

The action of the play passes in Roger Lennox's studio flat in
London W.8.

(Time — The Present)

ACT ONE

Scene 1—A Spring Morning

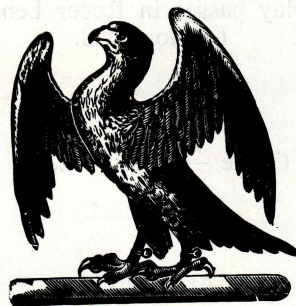
Scene 2—The Same Afternoon

Scene 3—The Next Day—Mid-day

ACT TWO

Scene 1—A Fortnight Later—Night

Scene 2—The Following Morning



TRADE MARK.

The Island's Leading Ales

OKELL & SON LTD.

FALCON BREWERY

DOUGLAS

ISLE OF MAN



Telephone : DOUGLAS 3034/5