
Gaiety Theatre, Douglas, Isle of Man
18th April to 24th April, 1981



THIRTIETH
DRAMA
FESTIVAL

NIGHTLY at 7.30
Sunday at 8.00

Presentation of Awards

by

AIR MARSHAL the
REV. SIR PATERSON FRASER
K.B.E. C.B.

FRIDAY, 24th APRIL, 1981

Complete Programme 25p

Remember!



**THERE'S
ALWAYS A
WELCOME
AT**

**WALTON'S
TELEVISION**

42 STRAND STREET : DOUGLAS

Telephone : DOUGLAS 5310

Award List – for Three-Act Plays

1st—The ' F. M. CUBBON TROPHY '

Donated by the late Rev. Canon F. M. Cubbon

2nd—The ' DICK CRAINE CUP '

3rd—The ' JACK LYNCH CUP '

The following is the basis of marking which will be used by the Adjudicator:—

Acting	40
Production	35
Stage Presentation	10
Endeavour, originality and attainment	15

Adjudicator : **GARTH JONES**, N.A.D.A.

Stage Manager for all plays: Mr. T. McEVOY

Awards for Solo and Other Entries

The ' VANDA LAMBERT AWARD '

for the most outstanding individual performance of the week (female)

The ' JUNE EDGE CUP '

for the most promising performance of the week (under 21 years)

The ' S. EDWARD BENN AWARD '

for the most outstanding individual performance of the week (male)

The ' MOLLIE CORKILL AWARD '

for the best supporting performance (male or female)

Final Adjudication and announcement of marks on Friday, 24th April, 1981

GOOD LUCK

To all the Teams from

THE LEGION PLAYERS

Please support our Spring Production

“ THE HOUSE ON THE CLIFF ”

By GEORGE BATSON

Friday, 15th and Saturday, 16th May

YOU DON'T HAVE TO BE

M. A. D.

to consult

NORRIS

For all your Printing Requirements

Stationery : Fancy Goods : Executive Toys

6 VICTORIA STREET : DOUGLAS

TELEPHONE: DOUGLAS 5054 and 5592

But you'd be insane not to pay us a visit !

MANX AMATEUR DRAMA FEDERATION

(Affiliated to N.D.F.A.)

✦ ✦ ✦ ✦ ✦

Patrons:

His Excellency the Lieutenant-Governor Rear Admiral
Sir NIGEL CECIL, K.B.E., C.B. and Lady CECIL

President: Mrs. OLGA COWELL, O.B.E.

Chairman: J. H. BRYAN

Vice-Chairman: Mrs. OLGA GRAY

Secretary: Mrs. JEAN WEBB

Treasurer: W. H. KELLY

Committee:

Representatives of: Arbory Players, Choral Union Society, Legion
Players, Manx Operatic Society, Peel Players, Phoenix Amateur
Theatre Company, Raven Players, Rushen Players, St. Mary's Players,
Service Players and Life Members.

SUNDAY, 26th APRIL, 1981—M.A.D.F. Service at ST. MATTHEWS
CHURCH at 3.00 p.m. The Rushen and Peel Players present "THE
VIGIL" by Ladislav Fodor.

The Committee wish to express their grateful thanks to the ARTS
COUNCIL for financial assistance and to the FRIENDS OF THE
GAIETY and the ISLE OF MAN BANK LTD. for their sponsorship
of publicity.

SATURDAY, 18th APRIL

THE PLAYERS, Cheadle Hulme

“ ROOKERY NOOK ”

a farce by
Ben Travers

CAST

Gertrude Twine MAVIS THORBURN
Mrs. Leverett BARBARA REES
Harold Twine KEN THORBURN
Clive Popkiss DAVID BURNS
Gerald Popkiss DEREK NEWTON
Rhoda Marley FIONA DIDLICK
Putz OLIVER BOWDEN
Admiral Juddy RON TOWNLEY
Poppy Dickey JEAN SIMPSON
Clara Popkiss JANE EVANS
Mrs. Possett MOLLI TURNER

Producer and Set Designer: JEAN COX
Stage Manager: TINA BORLAND
Prompt: RICHARD EVANS
Props: MOLLI TURNER

ACT I A night in summer 1926
ACT II The next morning
ACT III 2½ hours later

The action of the play takes place in the lounge and hall of
Rookery Nook, Chumpton-on-Sea, Somerset.

Sponsored by Fitzwilliam Bank (I.O.M.) Ltd., 7 Athol Street

SUNDAY, 19th APRIL

PARKSIDE PLAYERS, Ilford

“ JOHNNY BELINDA ”

by Elaine White

CAST

Johnny Belinda ELMER HARRIS
Belinda McDonald ELAINE WHITE
Dr. Jack Davidson DAVID WHITE
Black McDonald RICHARD SEAMAN
Locky McCormick GERRY SWEENEY
Stella Maguire KATE MORTON
Jimmy Dingwell WARWICK CAIRNS
Maggie McDonald FLORENCE HURST
Mrs. McKee JANET MACKINLAY
Mrs. Lutz LESLEY NUNN
The Reverend Edward Tidmarsh TOM HARMS
Villagers LINDA HALL
..... BRIAN JANIS

Designed and Directed by REG OLIVER

Stage Manager: BRENDA GRAISGOUR

Asst. Stage Managers: LINDA HALL and JANET MACKINLAY

Lighting: GORDON ENGLISH

Sound: BRIAN SANIS and TOM HARMS

ACT I	ACT II	ACT III
Scene 1	Scene 1 Spring	Scene 1
2 } Autumn	2 Autumn	2 } Winter
3 }		3 }

The action of the play takes place in Black MacDonald's Grist Mill on Prince Edward Island in the extreme north of Canada.

MONDAY, 20th APRIL

DRAMA 13, Birmingham

“ JENNY ”

by Tom Gallacher

CAST

Edna Fulmar PATRICIA HOWARTH
Dr. Abbott ALISTAIR NICOL
Norman Fulmar JOHN DOWELL
Jenny JEANETTE MASON
George Ballentine RON HALLMARK
Phillip Uttley NIGEL BLAKEY
Mary Denisoun MAUREEN HUTCHISON
Charles Peel ROGER LEEMING

Produced by JOAN TAYLOR

ACT I

Scene I An afternoon in autumn
Scene II Evening the following week
Scene III Morning two weeks later

INTERVAL — 15 MINUTES

ACT II

Scene I Afternoon 18 months later
Scene II Evening several weeks later
Scene III Morning several months later

The action of the play takes place in the Sitting room of a victorian house on the outskirts of a small town. Time: Present.

Sponsored by Smith, Foreshaw, Harper, Victory House, Douglas

TUESDAY, 21st APRIL

GROUP THEATRE COMPANY, London

“ THE GOLDEN PATHWAY ANNUAL ”

by John Burrows and John Harding

The 20 parts in this play are performed by 4 actors

CAST

RON BLACKBURN playsGeorge Peters
LAURENCE HUGHES plays Michael Peters
JOYCE THOMAS plays Enid Peters
June
Miss Jones
William
A lady
Madamoiselle Ophelia
A girl friend
TONY COLLINS plays The Officer
Collins
A chicken
Vadia
Owen
Seth
Roger
The Head
An Irishman
A Magistrate
A Doorman

Staged and Directed by BERNARD THOMAS

Stage Management and Prompt HILARY HUGHES

Sponsored by Roger & Co., Chartered Accountants, Douglas

WEDNESDAY, 22nd APRIL

KYTES THEATRE GROUP, Hornchurch

“ RELATIVELY SPEAKING ”

by Alan Ayckbourn

CAST

Greg GRAHAM POULTENEY
Ginny JO BRUTY
Philip DEREK MANSELL
Sheila QUEENIE HASSELL

Produced by LYNN SEAGER

Stage Manager ERNIE HASSELL

Technical Co-ordinator PATRICK STEVENS

ACT I

Scene 1 London, Sunday, 7 a.m.

Scene 2 The country, Sunday morning

INTERVAL

ACT II

Scene 1 The same, a moment later

Scene 2 The same, an hour or two later

The action takes place during a summer weekend in London and the country.

Sponsored by the Manilla Group of Companies

THURSDAY, 23rd APRIL

ABBEY ACTORS COMPANY, Belfast

“ ECHOES ”

by N. Richard Nash

CAST

Tilda ROSALEEN PELAN

Sam ALAN WAUGH

The Person JANE WAUGH

Produced by WILMA SMITH

ACT I

Morning

INTERVAL — 15 MINUTES

ACT II

The following morning

Time: The Present

Setting: The Place

Sponsored by Royal Insurance Co., Athol Street, Douglas

FRIDAY, 24th APRIL

TUDOR PLAYERS, Manchester

“ THE SUNSHINE BOYS ”

a comedy

by Neil Simon

CAST

Willie Black RONALD ARSCOTT
Ben Silverman MARTIN WRIGHT
Al Lewis JOHN PINFIELD
Patient MAURICE CLARKE
Assistant PATRICIA BARNES
Nurse LORRAINE BOWERS
Registered Nurse SHIRLEY SOUTHERN

Directed by SHIRLEY SOUTHERN

Stage Manager JEFF BRAILSFORD

Assistant Stage Manager HAZEL ARSCOTT

Properties MARGARET CARROLL

Sound ROWLAND MATTHEWS

ACT I

Scene 1 A 2 roomed apartment in an old hotel on Upper
Broadway

Scene 2 The following Monday a few minutes before eleven

ACT II

Scene 1 A doctor's office

Scene 2 Willie's hotel room 2 weeks later

Sponsored by Christies, Fine Art Auctioneers, Ramsey

G. & R. RIDGWAY

LIMITED

SOLE ISLAND AGENTS FOR :—

THE WORLD FAMOUS ROLEX WATCHES
also **OMEGA** ☆ **TISSOT** ☆ **INGERSOLL**

We have a selection of SWIZA miniature clocks and Swiss battery clocks in stock

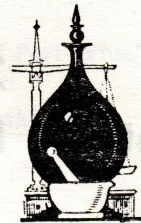
Large selection of modern and traditional design Engagement and Wedding Rings, Silver Plate Trays and Dishes, also Sporting Trophies

You will find us at :—

33 STRAND ST. & VILLA MARINA ARCADE, Douglas
TELEPHONE : DOUGLAS 5437

T. & V. KERRUISH

CHEMISTS



- ☆ **HERBS AND SPICES**
- ☆ **COSMETICS, ETC.**
- ☆ **GIFTS FOR EVERYONE**

BALLAQUAYLE ROAD : DOUGLAS
(Nr. DUKE'S ROAD)

JOAN'S WOOLS and CRAFTS
UNIT 21, ONCHAN SHOPPING CENTRE

Specialists for

KNITTERS : CRAFTWORKERS : DRESSMAKERS

- ☆ All Leading Brands of Knitting Wools
- ☆ Dress Fabrics, Tweeds, Haberdashery
- ☆ Soft Furnishing Trimmings
- ☆ Home Crafts and Accessories
- ☆ Agents for JONES Knitting Machines
- ☆ Tuition and Servicing Given

Any Knitting or Sewing Problems?
We are here to help you . . . Please call

Proprietor: Mrs. JOAN GILBERT Tel. Douglas 26009
— Open Six Full Days a Week —

MANANAN FESTIVAL
20th to 30th JUNE, 1981
at the ERIN ARTS CENTRE, Port Erin

LOOT by Joe Orton

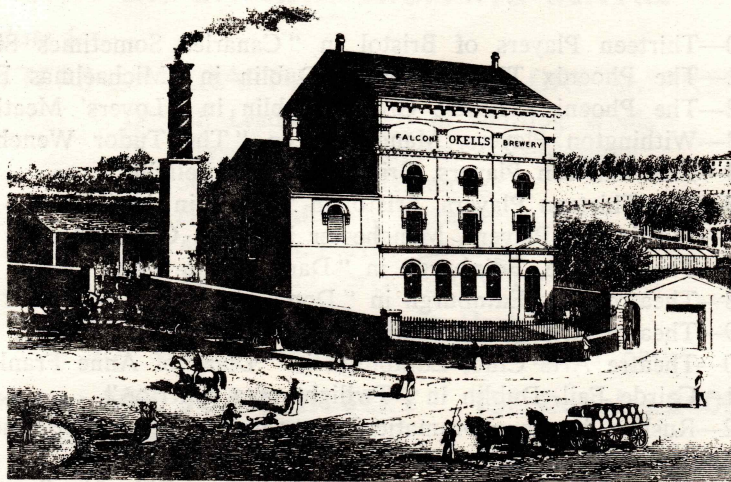
Professionally Produced by . . .

MISS IRENE ROSTROM, M.G.D.A.
(Easter Festival Adjudicator 1979)

Saturday, 20th and Monday, 22nd

PREVIOUS WINNERS

- 1950—Thirteen Players of Bristol in “Canaries Sometimes Sing”
1951—The Phoenix Theatre Group, Dublin in ‘Michaelmas Eve’
1952—The Phoenix Theatre Group, Dublin in “Lovers’ Meeting”
1953—Withington Players, Manchester in “The Tudor Wench”
1954—The Thirteen Players, Bristol in “Candlelight”
1955—The Thirteen Players, Bristol in “Frolic in April”
1956—Withington Players, Manchester in “The Gentle Arm”
1957—Theatre One, Edinburgh in “Dark of the Moon”
1958—Theatre One, Edinburgh in “Don’t Listen Ladies”
1959—Theatre Arts Club, Edinburgh in “All My Sons”
1960—Theatre Arts Club, Edinburgh in “Diary of Anne Frank”
1961—Cairde Fail, Dublin in “Twilight of a Warrior”
1962—Rushen Amateur Dramatic Society in “Ladies in Retirement”
1963—Tudor Players, Manchester in “Love and Lunacy”
1964—The Withington Players, Manchester in “Billy Liar”
1965—The Fylde Coast Players, St. Annes in “The Rehearsal”
1967—The Fylde Coast Players, St. Annes in “Fallen Angels”
1968—The Tudor Players, Manchester in “The Castle of Deception”
1969—Litherland Drama Group in “Oedipus Rex”
1970—The Green Room Players, Blackpool in “Spring and Port Wine”
1971—The Legion Players, Douglas in “Angels in Love”
1972—The Tudor Players, Manchester in “Relatively Speaking”
1973—Blackpool College Theatre Group in “Home”
1974—Formby Theatre Club in “Ghosts”
1975—Tudor Players, Manchester in “Plaza Suite”
1976—No Competition
1977—The Tudor Players, Manchester in “The Price”
1978—Dilys Guite Players, Sheffield in “Blithe Spirit”
1979—Theatre One, Thornton in “Home”
1980—The Players, Cheadle Hulme in “Table Manners”
-



TRADITIONAL BEER
AT HOME
40 PINT MINI CASK
MILD or BITTER

OKELL & SON LTD.

**Falcon Brewery, Murray's Road
Douglas**

Telephone : (0624) 3034

