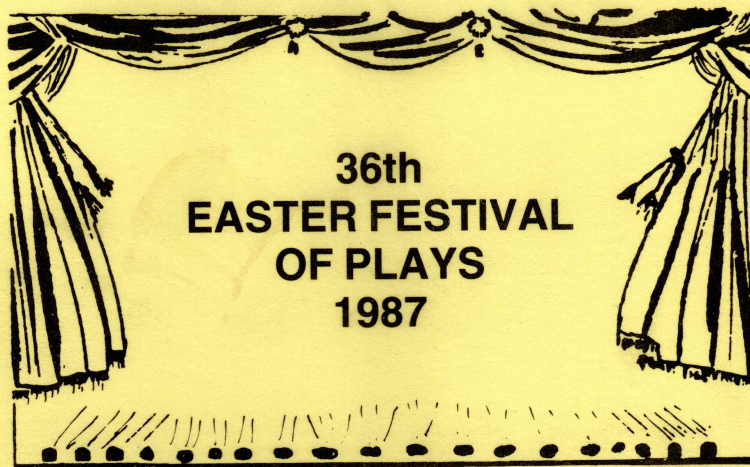




MANX AMATEUR DRAMA FEDERATION

(With the Co-operation of the I.O.M. Arts Council)



**36th
EASTER FESTIVAL
OF PLAYS
1987**

GAIETY THEATRE : DOUGLAS

18th April to 24th April, 1987

Presentation of Awards by:

Mrs. Betty Q. Hanson, M.L.C., J.P.

on

FRIDAY, 24th April, 1987

Curtain up - 7.30 p.m. Sunday - 8 p.m.

Complete Programme - 50p

Good Luck to the Legion Players from

A World of Bridal Fashion
by The Bridal House



'SPLENDIDE'
Dream Princess
From £175.00

**19 VICTORIA STREET,
DOUGLAS
Tel: 26041**

* FRENCH * ITALIAN
* AMERICAN
STYLES IN STOCK
MADE TO MEASURE TO YOUR
OWN STYLE A SPECIALITY

**HEADRESSES
AND VEILS
SOLD SEPARATELY**

**GOWNS
IN
STOCK
from
£45**

**FOR HOME SEWERS AND DRESSMAKERS
FABRICS GALORE and BRIDAL FABRICS
AS USED BY LEADING DESIGNERS.**

**Try our cut-out and ready to sew Bridal Gown Service
and Save ££££s**

Manx Amateur Drama Federation

Affiliated to N.D.F.A in co-operation with
ISLE OF MAN ARTS COUNCIL

Patrons:

His Excellency the Lieutenant Governor,
Major General Laurence New, C.B., C.B.E.
and Mrs. New.

President : Mrs Jane Brill.

Chairman : Mrs. Olga K. Gray.

Vice Chairman : Mrs. John Bowring.

Secretary : Mrs. Barbara Gale.

Treasurer : Mr. Stephen Whittam.

Committee :

Representatives of : Albany Theatre Group, Arbory Players, Douglas Choral Union, Legion Players, Manx Operatic Society, Raven Players, Rushen Players, St. Mary's Players, Service Players, and Life Members : Mrs. J. Brill, Mrs. M. Corkill, Miss K. Cowin, Miss M. Devereau, Mrs. J. Hall, Mrs. T. Fargher, Mrs. J. Webb and Mr. M.J. Lees.

The deaths last year of 3 of our Life Members, Doris Lynch, Dick Craine and Tony McEvoy, were a great loss to the live theatre on the Island. Doris Lynch and Dick Craine gave devoted service for many years and their loss is deeply felt. Tony McEvoy's hard work behind the scenes at the Gaiety will be greatly missed - it will never be quite the same without him and his great humour. We, together with many of the visiting teams, will always remember him with affection and gratitude.

The Committee wish to express their grateful thanks to : THE ARTS COUNCIL, The Friends of the Gaiety, I.o.M. Tourist Board, Gaiety Management, Isle of man Bank and to everyone who has contributed to the success of the Festival.

FOR THEIR 70th PRODUCTION



present

"MIXED DOUBLES"

Wednesday to Saturday 20th - 23rd May 1987

at 7.30 p.m.

Tickets: £1.50 to £3.00

are available now from the Gaiety Box Office

TEL: 25001

JOAN'S WOOLS and CRAFTS

Onchan Shopping Centre

Specialists for . . .

Knitters Craftworkers Dressmakers

- ★ All Leading Brands of Knitting Wools
- ★ Dress Fabrics, Tweeds, Haberdashery
- ★ Soft Furnishing Trimmings ★ Home Crafts and Accessories

Stockists of . . .

KNITMASTER, BROTHER & BOND KNITTING MACHINES

KNITMASTER "STITCHMASTER" SEWING MACHINES

LESSONS GIVEN

Please call . . . **Mrs. JOAN GILBERT**

Tel. Douglas 26009

— OPEN SIX FULL DAYS A WEEK —

Good Evening Ladies & Gentlemen

.....Welcome to the 36th. Easter Festival of Plays. Our Festival is a full member of the National Drama Festivals Association whose aim is to improve the standard of amateur drama and who organise the annual 'ALL WINNERS FESTIVAL' to which the winners of this Festival are eligible for invitation.

We are indeed fortunate to have as our adjudicator Mr. Ronald Whetton G.O.D.A.,L.G.S.M.,F.T.C.I. he is well known, respected and much sought after on the Festival circuit and we look forward to his comments - we wish his first visit to Ellan Vannin to be a very happy one.

To all of our teams - 'Good Luck' We hope you enjoy the comradeship that our Festival is famous for - A Festival that would not be possible without the continued financial support from the Isle of Man Arts Council to whom we are indebted.

Do please join us for our 'Finale' on Friday evening which has quite a different format to previous years. Our Adjudicator promises us a most enjoyable evening which will include the Presentation of Awards - including your own award, 'The Audience Participation Award' and the excitement of the winner of the Isle of Man Bank Drama Scholarship.

My thanks to everyone who has worked so hard behind the scenes for our Festival, and to You - our valued audience - sit back and enjoy the Festival and our beautiful theatre.

Thank you

Olga K. Gray
Chairman

THE RUSHEN PLAYERS

present

THE OLD COUNTRY

by ALAN BENNETT

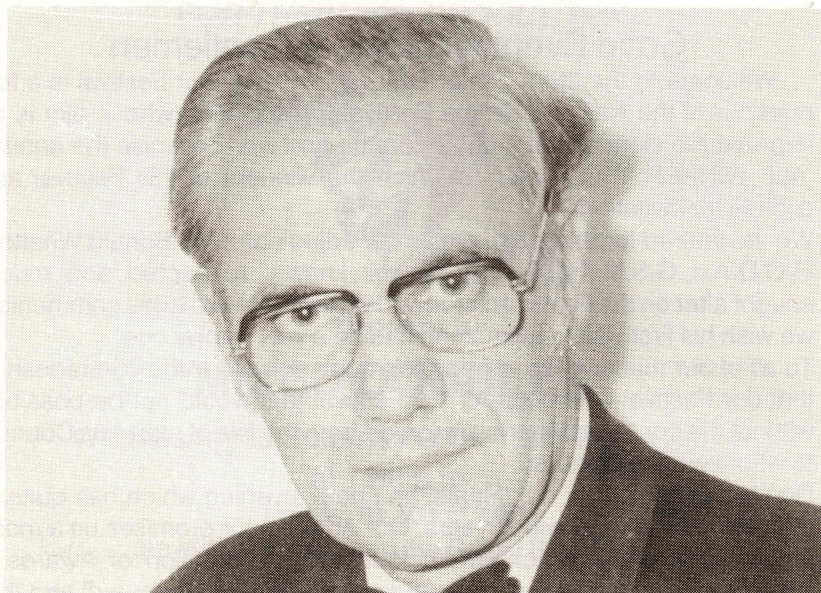
at 8 p.m. on

Wednesday 29th, Thursday 30th April & Friday 1st May

at

THE ERIN ARTS CENTRE

"a portrait of a defector"



Adjudicator : **Mr. Ronald Whetton** G.O.D.A.,L.G.S.M.,F.T.C.I.

Ron Whetton is a qualified teacher and was for many years the Drama Adviser for the Burton upon Trent and East Staffordshire Education Authorities specialising in Drama in schools, youth clubs and amateur societies. He is a Fellow of Trinity College, London, a Licentiate of the Guildhall School of Music and Drama, a Fellow of the English Speaking Board and a Fellow of the Royal Society of Arts. He was Principal of the Burton School of Speech and Drama for 28 years and was twice Chairman of the National Association of Drama Advisers and twice Chairman of the Guild of Drama Adjudicators. He is an examiner for the English Speaking Board and the Royal Society of Arts (Drama Teachers' Diploma), a member of the Central Council for Amateur Theatre, and of the Burton Music Festival. He is the author of the book, 'Looking for a King', an anthology of prose and poetry for Christmas, published by S.P.C.K.

Some highlights of his adjudicating career are various Divisional Finals, the Midlands Final, the Scottish Final, and the British Final for the National Festival of Community Theatre, the National Drama Festivals Association All-Winners Final and the All-Ireland One-Act Play Final. He has twice adjudicated the Zambian National Drama Festival and tutored at schools, colleges and the University of Lusaka in that country, as well as adjudicating for the British Forces Near East and undertaking three tours of adjudication for the Royal Navy.

In the field of Spoken English, Mr. Whetton is a most popular adjudicator. He has judged festivals ranging from Guernsey in the Channel Islands and the Isle of Wight in the South to Greenock in the North. The return visits he pays to festivals are some indication of his merit and ability.

AWARD LIST — FOR FULL LENGTH PLAYS

1st — THE 'F. M. CUBBON TROPHY'

Donated by the late Rev. Canon F. M. Cubbon.

2nd — THE 'DICK CRAINE CUP'

3rd — THE 'JACK LYNCH CUP'

INDIVIDUAL AWARDS

THE 'VANDA LAMBERT AWARD'

for the most outstanding performance of the week — (female).

THE 'JUNE EDGE CUP'

for the most promising performance of the week — (under 21 years).

THE 'S. EDWARD BENN AWARD'

for the most outstanding performance of the week — (male).

THE 'MOLLIE CORKILL AWARD'

for the best supporting performance — (female).

THE 'DAVID KENNAUGH AWARD'

for the best supporting performance — (male).

THE ADJUDICATOR'S 'OLGA GRAY AWARD'

for any outstanding individual contribution.

THE 'JOHN BRYAN AWARD'

for audience participation.

THE 'JACKIE BANNER AWARD'

for comedy.

THE 'RENE SAVAGE AWARD'

for costume and make-up.

We are grateful to the OLGA COWELL BEQUEST FUND which provides for momentoes to be presented to each participating team.

The following is the basis of marking which will be used by the Adjudicator :

ACTING—40 PRODUCTION—35 STAGE PRESENTATION—10
ENDEAVOUR, ORIGINALITY AND ATTAINMENT—15

FINAL ADJUDICATION ON FRIDAY 24th APRIL, 1987

SATURDAY, 18th APRIL

THE LEGION PLAYERS, Isle of Man

present

“LOVE AFFAIR”

by ALFRED SHAUGHNESSY

CAST

Valentine Matignon MARIAN NORRIS
Patrick Croisset MICHAEL LEAN
Ghislaine HILARY NORRIS
Jean Carmarec ARTHUR QUIGGIN
Gerard Lenotre ARTHUR BAWDEN
Jerome PAUL DUNNE
Brigitte Montillier DENNY CAIN
Young Man IAN RADCLIFFE

Director : MICHAEL J. LEES

Company Stage Manager : ROY BOWDEN

Stage Team : GEOFF KELLY, ANNE-MARIE LEES, IAN
RADCLIFFE, RONA LAYCOCK, RUTH HYDE, ANN
PENNINGTON, BRIAN BULTITUDE.

Continuity : MAUREEN KELLY

Costume Designers : MARGARET BOWDEN, LYNNE
PLEAVIN, MARGARET HIGGINS.

The action takes place in Valentine Matignon's top floor
apartment in an elegant house in the fashionable Rue de
Varenne, Paris - Spring 1925.

ACT 1 Scene 1 - Early evening, Tuesday
 Scene 2 - The next morning & later that day

INTERVAL OF 15 MINUTES

ACT 2 Scene 1 - The next morning, Thursday
 Scene 2 - A few days later, 8 p.m.

Light fittings & Rugs kindly loaned by ASPECT Strand Road,
Port Erin.

SUNDAY, 19th APRIL

**DRAMA 13, Birmingham
present**

“FAMILY DANCE”

by FELICITY BROWNE

CAST

Ben Musgrave NIGEL BLAKEY
Toby Musgrave(his brother) OGER LEEMING
Diana Verney(his sister) ILEEN STAUNTON
Sophie Musgrave(his wife) PATRICIA HOWARTH
Victoria Musgrave(Toby's wife) ... MAUREEN HUTCHINSON
Michael Verney(Diana's husband) LOU DILKE
Charles Verney(Diana's brother-in-law) TONY NOCK

Directed by : JOAN TAYLOR

Stage Director & Lighting : ROGER CUNNINGTON

Production Asst. & Costumes : PAT FRANCHI

Stage manager : ANDREW HALLMARK

Props. : JOAN TAYLOR

Sound : JEAN BUGGINS

Make-up & Continuity : LIBBY LUDLOW

The action takes place in the kitchen of the Musgrave's house.

Time - the present

ACT 1 - Late evening

Interval

ACT 2 - A short while later

MONDAY, 20th APRIL

COMBINED THEATRE GROUP, Essex

present

SUMMER SEASON

by ALBERT JEANS

CAST

Lydia Coxton DENISE SAUNDERS
Eddie Robbins KENNETH HARMON
Fred Wallace CHRIS DAVIES
Martyn Valence PETER WILSON
Girlie Barnes JULIE BORDER
Grace Chubb NINA WILSON
Lorna Wood JOAN STANSFIELD
Stephanie Cole LORRAINE WEBB
Nicholas Hammond GEORGE PENFIELD
Rudie Ellis KENNETH HAZELDINE
Charlie Walker KENNETH SAUNDERS
Emma Price ANGELA STRANGE
Sam Rosenthal TONY GODFREY
Gavin Grant PAUL RADFORD
Toni Durrell ANN STRANGE

The play directed by ALBERT JEANES

Music and lyrics of the original songs by ALBERT JEANES

Arranged by DAVID WOOD

The action passes upon the stage of the Pier Pavilion in a small
seaside town during the late sixties

Synopsis on Scenes

1 - April 2 - May 3 - June 4 - July

Interval

5 - August 6 - September 7 - October

Stage Manager : BARBARA MARSHALL

Decor : KENNETH HARMON

Props. : FAY PEDDER, ELIZABETH SAUNDERS

Lighting : DAVID SHORT

Pianist & Musical Director : MARIA DEVENPORT

TUESDAY, 21st APRIL

GROUP THEATRE, London

present

STAIRCASE
by CHARLES DYER

CAST

✓ Charlie KEN CLARK
Harry BERNARD THOMAS
Voices off LAURENCE HUGHES, PETER VICTOR

The action of the Play is in a Barber's Shop called "Chez Harry"
Time - 1966

Stage Manager : HALEY CLARK
Assistant Stage Manager : LAURENCE HUGHES
Prompt : JUDITH BECKETT
Set Design : BERNARD THOMAS
Lighting : SEAN THOMAS
Director : JOYCE THOMAS

ACT 1 Scene 1 - Evening
Scene 2 - Half hour later

Interval

ACT 2 - Early next morning

WEDNESDAY, 22nd APRIL

**THE SEDGEFIELD PLAYERS
Stockton-on-Tees**

present

KEY FOR TWO

by JOHN CHAPMAN & DAVE FREEMAN

CAST

Gordon GEOFF CLIFFORD-BROWN
Harriet NORMA NEAL
Alec DAVID GILL
Anne ELAINE COATES
Richard KEN BROWN
Magda DOROTHY TATE
Mildred....MARGARET BELL

Directed by WALTER HOWELL
Stage Manager : ALLAN DAVISON
Lighting : RAY TATE
Prompt : SHEILA ARCHER
Wardrobe : MARY DAVISON

The action of the Play takes place in a flat in Brighton

THURSDAY, 23rd APRIL

THE CLARENCE PLAYERS, Belfast

present

“THE GOODBYE PEOPLE”

by HERB GARDNER

CAST

Arthur Korman DES LOUGHRIDGE
Max Silverman PADDY ORMONDE
Nancy Scott SUSAN TODD
Eddie Bergson DAVID HUMPHRIES
Michael Silverman WILSON CAUGHERS
Marcus Soloway TOM KERNAHAN

Direction : RAY HASTIE & VALERIE NELSON

Set design & Stage Manager : ALAN MARSHALL

Lighting & Sound : DREW McCONNELL & PAUL PARHILL

Props. : SUZANNE NEILL & FRANCIS HASTIE

Continuity : CAROLE HUNTER

Stage team : PETER NELSON & ALAN GRAY

The action of the Play takes place on the beach at Coney Island

Time - Late February

FRIDAY, 24th APRIL

FESTIVAL FINALE

Our Adjudicator, Mr. Ronald Whetton will give a resume of the week with full and final adjudications. This will be followed by the announcement of the Winner of the ISLE OF MAN BANK'S YOUTH SCHOLARSHIP for 1987.

Interval

THE WINNERS OF THE SCHOLARSHIP
will present their winning performance

The draw for the
AUDIENCE PARTICIPATION AWARD
will then take place

Followed by the
PRESENTATION OF AWARDS BY:

Mrs. BETTY Q. HANSON, M.L.C., J.P.

THE ALBANY THEATRE GROUP

present at the
GAIETY Theatre



JUNE 9th - 13th
1987

“AS TIME GOES BY”

A nostalgic journey through time with mime, music, sketches
and dance.

with guest artistes

SHIRLEY CURRIE, GRAHAM CROWE,
PETER CRINGLE, ARTHUR COWLEY
LHON DHOO, WANDERERS,
MEADOWSIDE CHORALS

“SCROOGE ——— THE STINGIEST MAN IN TOWN”

A new musical version of this well known and well loved family
story

Auditions to be held at the end of April 1987

Interested in joining this production???

Contact: Mrs. Barbara Gale
8, Carmane Close, Peel.
Tel: 84 3555 (24hrs)

NOTICE TO PATRONS

EMERGENCY EVACUATION PROCEDURE

If you are asked to evacuate the building, please do so as quietly as possible and leave by the nearest available exit to which you are directed by the staff.

In the event of an emergency which by necessity requires that this theatre be evacuated. You, as a member of the audience, are requested to co-operate by paying strict attention to any instructions either by announcement from the stage, or given verbally by a member of the staff of this theatre.

DO NOT RUN OR PUSH.

DO NOT turn back or stop to collect personal belongings.

DO NOT re-enter the building for any reason until told to do so.

DO NOT act in a manner that could cause obstruction to emergency services attending the building to deal with the emergency.

Avoiding panic at all costs proceed in an orderly manner to a place of safety away from the building.

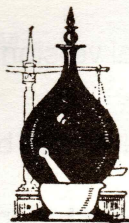
N.B.

- (a) All gangways, passages and aisles shall be kept entirely free from chairs or any other obstruction.
- (b) Persons shall not be permitted to stand in any gangway or aisle.
- (c) The safety curtain shall at all times be maintained in working order and shall be lowered and raised during the time of every performance.

T. & V. KERRUISH

Ballaquayle Road

Ask your Pharmacist
You'll be taking
Good Advice

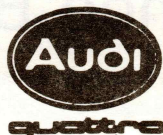


Near bottom of Duke's Road
Telephone : Douglas 73912

Corkill's Garage Ltd

*The BEST name on the Island
with the best range in Europe.*

MAIN ROAD, ONCHAN
Telephone (0624) 76809



Your Audi and Volkswagen Dealer

CONISTER TRUST



for finance
Established 1935

Our facilities include finance for motor vehicles, industrial and commercial machinery, agricultural equipment, home appliances, furniture, boats, etc.

**As a Manx Company we offer —
Personal Service at the Best Rates**

Ask your dealer for details, or contact

CONISTER TRUST LTD.

18, FINCH ROAD, DOUGLAS

Tel. Douglas 74455/6



JMP

The Manx
Insurance Brokers

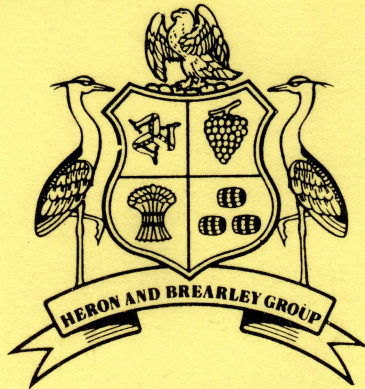
DOUGLAS
23954

68 ATHOL STREET
DOUGLAS



PREVIOUS WINNERS

- 1950 – Thirteen Players, Bristol in “Canaries Sometimes Sing”.
1951 – The Phoenix Theatre Group, Dublin in “Michaelmas Eve”.
1952 – The Phoenix Theatre Group, Dublin in “Lovers’ Meeting”.
1953 – Withington Players, Manchester in “The Tudor Wench”.
1954 – The Thirteen Players, Bristol in “Candlelight”.
1955 – The Thirteen Players, Bristol in “Frolic in April”.
1956 – Withington Players, Manchester in “The Gentle Arm”.
1957 – Theatre One, Edinburgh in “Dark of the Moon”.
1958 – Theatre One, Edinburgh in “Don’t Listen Ladies”.
1959 – Theatre Arts Club, Edinburgh in “All My Sons”.
1960 – Theatre Arts Club, Edinburgh in “Diary of Anne Frank”.
1961 – Cairde Fail, Dublin in “Twilight of a Warrior”.
1962 – Rushen Amateur Dramatic Society in “Ladies in Retirement”.
1963 – Tudor Players, Manchester in “Love and Lunacy”.
1964 – Withington Players, Manchester in “Billy Liar”.
1965 – The Fylde Coast Players, St. Annes in “The Rehearsal”.
1967 – The Fylde Coast Players, St. Annes in “Fallen Angels”.
1968 – Tudor Players, Manchester in “The Castle of Deception”.
1969 – Litherland Drama Group in “Oedipus Rex”.
1970 – Green Room Players, Blackpool in “Spring and Port Wine”.
1971 – Legion Players, Douglas in “Angels in Love”.
1972 – Tudor Players, Manchester in “Relatively Speaking”.
1973 – Blackpool College Theatre Group in “Home”.
1974 – Formby Theatre Club in “Ghosts”.
1975 – Tudor Players, Manchester in “Plaza Suite”.
1976 – No Competition.
1977 – Tudor Players, Manchester in “The Price”.
1978 – Dilys Guite Players, Sheffield in “Blithe Spirit”.
1979 – Theatre One, Thornton in “Home”.
1980 – The Players, Cheadle Hulme in “Table Manners”.
1981 – Abbey Actors, Belfast in “Echos”.
1982 – Group Theatre Company, London in “Rashomon”.
1983 – Theatre One, North Fylde in “Exit the King”.
1984 – Parkside Players in “Da”.
1985 – Tudor Players, Manchester in “Bedroom Farce”.
1986 – Tudor Players, Manchester in “Accrington Pals”.
-



HERON AND BREARLEY GROUP

incorporating

**CASTLETOWN BREWERY LIMITED
HERON AND BREARLEY LIMITED
OKELL AND SON LIMITED**

**Ale, Wine and Spirit Merchants
Traditional Brewers of
Real Ale**



**TELEPHONE:
Douglas 74611**

