



MANX AMATEUR DRAMA FEDERATION
(With the Co-operation of the I.O.M. Arts Council)



GAIETY THEATRE : DOUGLAS
25th March to 31st March 1989

Presentation of Awards by:
Mr. John Mundy of BBC North West
on

FRIDAY, 31st MARCH, 1989
Curtain up — 7.30 p.m. Sunday — 8.00 p.m.
Complete Programme — 50p

CONISTER TRUST



for finance
Established 1935

Our facilities include finance for
motor vehicles, industrial and
commercial machinery, agricultural
equipment, home appliances,
furniture, boats, etc.

**As a Manx Company we offer —
*Personal Service at the Best Rates***

Ask your dealer for details, or contact

**18 FINCH ROAD, DOUGLAS
Tel. Douglas 74455/6**

Manx Amateur Drama Federation

Affiliated to N.D.F.A. in co-operation with
ISLE OF MAN ARTS COUNCIL

Patrons:

His Excellency the Lieutenant Governor,
Major General Laurence New, C.B., C.B.E.
and Mrs. New.

President: Mrs. Jane Brill.

Chairman: Mr. John R. Bowring.

Vice-Chairman: Mrs. R. Savage.

Secretary: Mrs. Barbara Gale.

Treasurer: Mr. Stephen Whittam.

Committee:

Representatives of: Albany Theatre Group, Arbory Players, Douglas Choral Union, Legion Players, Manx Operatic Society, Raven Players, Rushen Players, St. Mary's Players, Service Players, and *Life Members:* Mrs. J. Brill, Mrs. M. Corkill, Miss K. Cowin, Miss M. Devereau, Mrs. J. Hall, Mrs. J. Webb, Mr. M. J. Lees, Mrs. O. Gray.

**The Committee wish to express their grateful thanks to:
THE ARTS COUNCIL, The Friends of the Gaiety,
Department of Tourism, Gaiety Management, Isle of Man
Bank and to everyone who has contributed to the
success of the Festival.**

On the Isle of Man.

Oil provides the cheapest, cleanest,
safest and most economical form of
heating for home, office or factory.

Manx Petroleums give you
a fast efficient delivery
service second to none.



SHELL DISTRIBUTORS

FOR THE ISLE OF MAN

Manx Petroleums

First for Service.

GOOD EVENING, LADIES & GENTLEMEN

Welcome to the 39th Easter Festival of Plays — a festival as popular as ever among would-be competitors. We extend a warm Manx welcome to all our visiting teams, old and new!

We are delighted to have as our adjudicator, Mr. John Shooter, G.O.D.A., making a return visit to the Isle of Man after many years, but first time as adjudicator.

As ever, we are most grateful to the ISLE OF MAN ARTS COUNCIL for continuing financial support.

The ISLE OF MAN BANK DRAMA SCHOLARSHIP, now in its fifth year, will be presented on the final night of the Festival and we are indebted to the Bank for continuing to give much support to young people interested in Drama. The MANX NATIONAL YOUTH THEATRE staged a most successful production in this theatre last autumn. Look out for its next production later this year in a different venue!

My thanks, as ever, to all who have worked so hard for the success of this Festival, and to you, our audience, for your valued support.

JOHN R. BOWRING,
CHAIRMAN.

SUITE SUCCESS

WEDDINGS · CONFERENCES · BIRTHDAYS · SEMINARS



**THE
WALLBERRY
SUITE**

WHATEVER THE OCCASION

Sefton Hotel · Harris Promenade · Douglas · Isle of Man
Telephone: 0624 26011 · Fax: 76004 · Telex: 627519 · Prestel: 25120353

For the local business that's going places . . .



Alexander Stenhouse is one of the major insurance brokers and insurance managers in the Isle of Man providing insurance, risk management and employee benefits advice and services to a growing number of businesses, large and small.

With this experience and the expertise of our highly skilled staff, we know the special needs of the local business environment. We also have the resources and support of the world's largest retail insurance broker behind us, with 300 offices in 72 countries. We're a powerful partner for the business in the Isle of Man that's going places.

ALEXANDER STENHOUSE (ISLE OF MAN) LIMITED
28 Athol Street, Douglas
Tel: 0624 73325 Telex: 628453 Fax: 0624 23664

A&A ALEXANDER STENHOUSE
(ISLE OF MAN) LTD.
Local and International

A&A ALEXANDER STENHOUSE
INTERNATIONAL SERVICES
(ISLE OF MAN) LTD.

*Paying too much for your printing?
then contact*

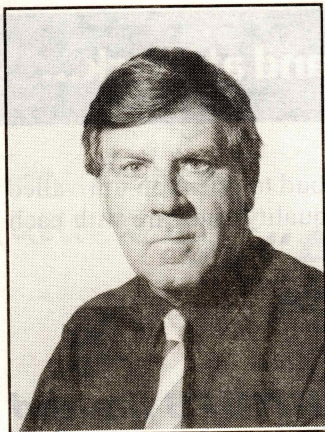
QUINE & CUBBON



**COLOUR PRINTING
PHOTYPESETTING
COMMERCIAL PRINTING
OFFSET LITHO
LETTERPRESS
THERMOGRAPHIC
CONTINUOUS STATIONERY**

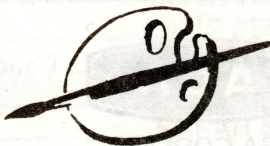
PORT ST. MARY

(0624) 832141



John Shooter makes a welcome visit from Nottingham where he is a tutor at the Avon Academy of Speech and Drama. He was last on the Island in 1976 when he ran a residential weekend drama course at The Grand Island Hotel, Ramsey. His experience as a drama tutor has taken him to drama courses in many parts of England and he has particular interest in working with drama for the visually handicapped. He has adjudicated festivals in several parts of Ireland and last year adjudicated The Amateur Drama League of Ireland National Finals at the Hawkswell Theatre, Sligo. His enviable knowledge of plays has been gained from a wide variety of adjudications and theatre activity throughout England and Ireland.

The Artist



22 CHURCH STREET, DOUGLAS. Tel: 29851
(Off Athol Street, down past the old Police Station)

Over 300 Frames to choose from - YOU NAME IT WE FRAME IT

Choose the very latest in modern frames, or conventional. We have a good selection of antique-type hand-made frames. FIFTY shades of Mount Board in traditional or contemporary design, to surround your Water Colour or Print.

We Specialise in framing Tapestries. A Restoration Service is Available

Agents for Winsor Newton and Daler/Rowney Art Materials. We also sell Craft Materials such as Glass Engraving Sets, Gold Enamelling, Marquetry, Scaperfoil, Fabric Paints and Modelling Materials, and are...

... the agents for:

FIMO BRILLIANTLY COLOURED MODELLING MATERIAL

More Service... At Home... and at Work...

With '80 years' experience to our name, we are proud to offer you unrivalled knowledge and expertise — guaranteeing more quality and care with each article we handle.

ALL-ISLAND SERVICE

- * LAUNDRY
- * DRY CLEANING
- * RENTAL SERVICES
- * CARPET AND
CONTRACT CLEANING

clucas cleaners limited

of TROMODE

Telephone: Douglas 73961

For Quality that shows



AGA COOKERS
AGAMATIC BOILERS
SOLE DISTRIBUTOR

Rayburn

COOKERS
ROOM HEATERS
MAIN DEALERS

COALBROOKDALE

MULTI-FUEL STOVES

SERVICE
SPARE PARTS
REPAIRS & MAINTENANCE

Black's
FIREPLACES LTD.

MYLROIE HOUSE

39 NEW ROAD

LAXEY

Telephone: 781212

SATURDAY, 25th MARCH, 1989

FLYDE COAST PLAYERS, LYTHAM

present:

**"AMADEUS"
BY PETER SHAFFER**

CAST

Antonio Salieri KEITH CARTMELL
Wolfgang Amadeus Mozart JOHN SIMM
Constanze Weber, (*Wife of Mozart*) FIONA MULLANY
Joseph II (*Emperor of Austria*) ALAN VEALE
Count Johann Von Strack (*Groom of the Imperial Chamber*) ... BILL HALL
Count Franz Orisini Rosenberg (*Director of the Imperial Opera*)
KEN CHRISTIANSEN
Baron Gottfried Van Swieten (*Prefect of the Imperial Library*)
KEITH ROGERS
Venticello 1 (*"Little Winds" Purveyors of*) KATIE PERKINS
- Venticello 2 (*"Information, Gossip or Rumour"*) JANE BARNACLE
Kalkarina Cavalieri (*Salieri Pupil*) MICHELL BROWN
Teresa Salieri (*Wife of Salieri*) SARAH SMITH
Salieri's Valet and Major Domo DAVID RUSH

The play is set in Two Acts with a fifteen minute interval.

Stage Manager GAVIN ROBERTS
Prompt GRETA CARTMELL
Lighting TONY EDWARDS
Assistant Stage Manager ALLAN POTTER
Wardrobe JILL CLARKSON
Sound STEVE LARAWAY

Mary Jane

at Club Henley

GRAND ISLAND HOTEL — RAMSEY

Mary Jane Hair and Beauty Salon for Ladies and Gentlemen are pleased to announce the opening of their sister salon at the Grand Island Hotel.

Offering a full range of Facial and Body Beauty Therapy Treatments and.....

Expert Hair Care Programmes using Professional Products.



For Appointments Please Telephone 812455

Year round Fast Film

Processing by the

Island's only

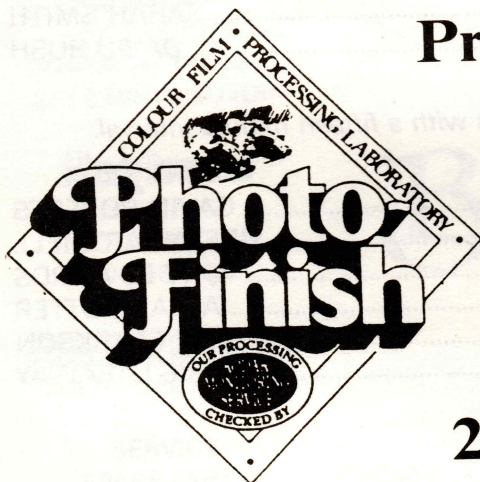
Kodak

Express

Laboratory

2-4 Market Hill,

Douglas Tel: 28022



SUNDAY, 26th MARCH, 1989

BRIGSTOWE THEATRE COMPANY

present:

"ONE OF US"

BY ROBIN CHAPMAN

CAST

Goronwy Rees ROBERT RUSSELL
Guy Burgess JOHN MARKLEY
Margie Rees PAULETTE MARKLEY
Anthony Blunt TONY LEWIS-JONES

Director LIZ VINEY
Stage Manager MIKE PRICE
Lighting & Sound VARIOUS MEMBERS OF THE GROUP

The play takes place on the patio in the garden of Rees' home at
Sonning-on-Thames. Early Summer, 1951.

ACT I

Sunday, 6th May (Early Evening)
— 20 Minute Interval —

ACT II

Scene I — Sunday, 27th May (Night)
Scene II — Monday, 28th May (Morning)

**ORIGINAL WORDS AND MUSIC COMPOSED AND PLAYED
BY TOM BROWN**

MONDAY, 27th MARCH, 1989

DRAMA 13, BIRMINGHAM

presents:

IAN M. LAURENSEN'S PRODUCTION OF

"GHOSTS"
BY HENRIK IBSEN

CAST

Regina KAREN BUGGINS
Engstrand LOU DILKE
Pastor Manders MIKE PERCY
Mrs. Alving PAT DOWELL
Oswald Alving ANDY GOUGH

Stage Manager GEOFF LAWRENCE
Lighting ROGER CUNNINGTON
Sound JEAN BUGGINS
Properties JUNE LAWRENCE
Prompt JOAN HALLMARK
Make-up PATRICIA HOWARTH
Production Assistant MAUREEN HUTCHISON

(COSTUMES BY THE GROUP)

ORIGINAL MUSIC BY BARRY POXON

ACT I

The House of Mr. and Mrs. Engstrand *Interval of 15 Minutes*

ACT II

Later the same day *Interval of 5 Minutes*

ACT III

The early hours of the next morning.

— TIME: THE LATE 19th CENTURY —

TUESDAY, 28th MARCH, 1989

COMBINED THEATRE GROUP, ESSEX

present:

**"EAST LYNNE"
or "Never Called Me Mother"**

Books, Music and Lyrics by: **BRIAN J. BURTON**

Based on a Novel by Mrs. Henry Wood.

CAST

Archibald Carlyle (*the Master of East Lynne*) ... LAWRENCE ALLWRIGHT
Isabel Carlyle (*his wife*) ANGELA O'CONNOR
Cornelia Carlyle (*his unmarried sister*) JOAN STANSFIELD
Lord Mount Severn (*Isabel's only living relative*) JULIAN WHITE
Barbara Hare (*secretly in love with Archibald*) FAY PEDDER
Richard Hare (*her brother — a fugitive from Justice*) ... KEN HAZELDINE
Francis Levison (*an unscrupulous rogue with designs on Isabel*)
PETER WILSON
Little Willie (*a delicate child of seven years*) ELIZABETH SAUNDERS
Joyce Hallijohn (*an upper-maid*) BARBARA MARSHALL
Wilson (*a maidservant*) ALICE BECKINSALE

Directed by ALBERT JEANES
Stage Management IAN O'CONNOR
Setting PETER WILSON
At the Pianoforte MARIA DAVENPORT

The action of the play passes in the sitting-room at East Lynne.

ACT I

Scene 1 Late evening on a Friday in June
Scene 2 A month later — early afternoon

(INTERVAL)

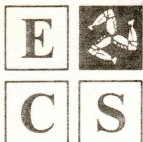
ACT II

Scene 1 A few years later — afternoon
Scene 2 The next day — late afternoon
Scene 3 Later the same evening

ACT III

Scene 1 A few years later — 9.00 p.m. (a winter evening)
Scene 2 Eighteen months later — a morning in summer
Scene 3 A month later — evening
Scene 4 Another month later — late afternoon

— TIME: DURING THE REIGN OF QUEEN VICTORIA —



EUROPEAN CORPORATE SERVICES (ISLE OF MAN) LIMITED

We advise on and organise the structuring of your financial affairs to ensure maximum asset protection and tax efficiency (we do not offer investment advice, but work in conjunction with your professional investment advisers and leading banks).

We are a subsidiary of the European Corporate Services Group (Capital US\$1 million) which also has offices in Gibraltar, Spain, Jersey, Hong Kong, Switzerland, Cyprus, the Cayman Islands and associates in Bermuda and the United Kingdom.

Our services include:

- ★ International Tax/Pensions Planning and Advice
- ★ Offshore Investment and Trading Company Administration
- ★ Trustee and Fiduciary Services
- ★ Expatriate Employment Company Services
- ★ Ship and Yacht Registration and Ownership

For further details of our services in the Isle of Man and worldwide, please write to:

**The Managing Director,
European Corporate Services (IOM) Limited,
P.O. Box 95, Victory House, Prospect Hill, Douglas, Isle of Man
Telephone: 0624 27321 Telex: 629222 Factor G Fax: 0624 24530**

AIR TAXI • AIR AMBULANCE • AIR FREIGHT CHARTER
DESTINATIONS TO: U.K. — IRELAND AND EUROPE

WOODGATE EXECUTIVE AIR CHARTER LTD

TEL (0624) 823707
TELEX 629777 WOODAIR G.



WEDNESDAY, 29th MARCH, 1989

GROUP THEATRE COMPANY, LONDON

present:

"HARD TIMES"

BY CHARLES DICKENS

Adapted by: **STEPHEN JEFFREYS**

CAST

Josiah Bounderby/Sleary BERNARD THOMAS
Thomas Gradgrind/Mr. Slackbridge RON BLACKBURN
Louisa Gradgrind/Emma Gordon/Mrs. Pegler/Mrs. Blackpool
EMMA HEWITT
Master Thomas Gradgrind GENE ROBERTSON
Sissy Jupe/Rachael/Chair Noman LIZ MEYER
Stephen Blackpool/James Harthouse COLIN BOUCTER
Bitzer/Waiter DENIZ AYHAN
Mrs. Sparsit/Mary Stokes HAYLEY CLARK
Mrs. Gradgrind JOYCE THOMAS

Director JOYCE THOMAS
Staging THE COMPANY
Lights SEAN THOMAS
Prompt BARBARA BLACKBURN

The play is set in Coketown, Lancashire in the 1840's.

ACT I

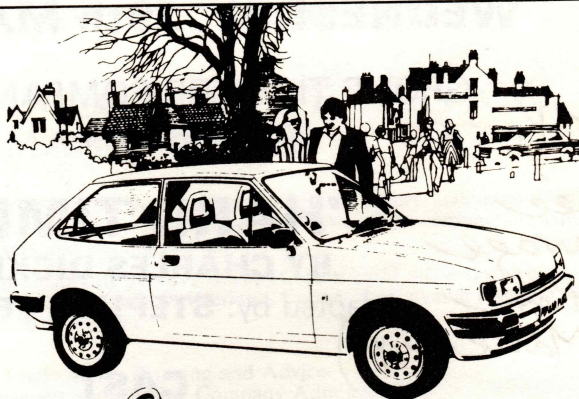
Set in the Northern Industrial Town of Coketown

(INTERVAL)

ACT II

(The Same)

FOR YOUR NEW



try

Empire Garage Ltd.

Promenade, Peel, Isle of Man

Telephone: Peel 2666 (2 lines)



Rent-a-Car

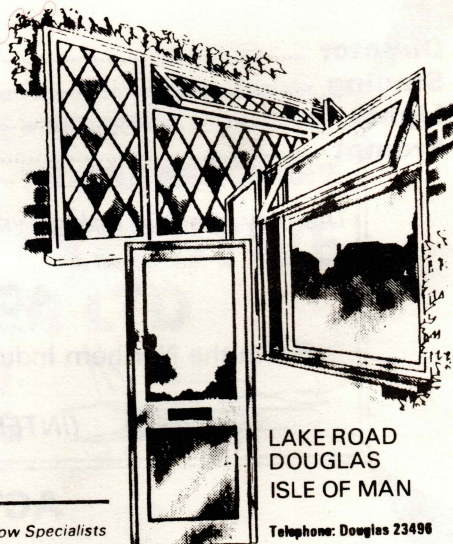


AN OPEN AND SHUT CASE

*Made at our factory in Douglas to
your own specifications and fitted
by craftsmen*

Activities:

- ★ Glass Merchants —
Trade and Retail
(Pilkingtons Main
Island Agents).
- ★ Aluminium Windows
— Commercial and
Domestic Market.
- ★ Residential Doors.
- ★ Patio Doors.
- ★ Patent Glazing.
- ★ Double Glazing.
- ★ Secondary Glazing.
- ★ Installation Service.
- ★ Fabricators/Installers
of uPVC Window and
Door System.



LAKE ROAD
DOUGLAS
ISLE OF MAN

Telephone: Douglas 23496

**Heywood
Quiggin Ltd.**

Glass and Window Specialists

THURSDAY, 30th MARCH, 1989

MARTELLO PRODUCTIONS, CO. WICKLOW, EIRE

present:

"I DO NOT LIKE THEE, DR. FELL"

BY BERNARD FARRELL

CAST IN ORDER OF APPEARANCE

Paddy CYRIL BOYHAN
Joe PAT McCANN
Suzy SIOBHAN MORIARTY
Roger NICK WARINTON
Peter TREVOR BAILEY
Maureen SANDRA MULLEN
Rita JACKIE FISHER

Directed by MICHAEL WILLOCK
Stage Manager HELEN WARINTON
Assisted by ANDREE HAMILTON
..... KATHLEEN GREHAN
Lights & Sound MICHAEL CANN
Assisted by BRENDAN DORGAN
..... BRIAN CANN

ACT I

The action of the play takes place in an empty third floor room of a city building.

(INTERVAL — 15 MINUTES)

ACT II

(The Same)

— TIME: THE PRESENT —

This Team has been Sponsored by:

Anglo Irish
BANKCORP (I.O.M.) LTD

Well Road House, Market Street, Douglas, Isle of Man.
Telephone (0624) 25508 Fax (0624) 25497



WE CHOSE THE ISLE OF MAN

FOR....

Its business climate – yes

Its stability – yes

Its accessibility – yes

SEVERAL THOUSAND CUSTOMERS CHOSE US FOR....

Security – we are a subsidiary of Bank of Ireland with over £7000 million assets and 200 years experience.

Confidentiality – our private computer system keeps private affairs private.

Communications – excellent telephone/telex facilities exist between the Island and neighbouring countries.

Specialised staff – speedily attend to your enquiries.

Attention to detail – we concentrate on the things we do best.

- Deposit services for expatriates
- Deposit quotations in all major currencies, including Sterling, Euro, Irish Punts, US Dollars, Deutsche Marks etc.
- Foreign Exchange facilities in all major currencies.
- Secured Loans – 'Back to Back' loans, Guarantees and Credits in all major currencies.
- Personal Holding Company Management Services.
- Trusteeships of Discretionary and other Settlements.
- Safe Custody of Registered Securities in Nominee Name.

For further information please contact:
MONEY MARKET DEALERS



THE INVESTMENT BANK OF IRELAND
(I.O.M.) LIMITED

20 Finch Road, Douglas, Isle of Man
Telephone Douglas (0624) 29661
Telex 628270

FRIDAY, 31st MARCH, 1989

SEDFIELD PLAYERS COMPANY, DURHAM

present:

"SEASON'S GREETINGS"

BY ALAN AYCKBOURN

CAST

Neville DAVID GILL
Belinda (*his wife*) THELMA FLOOD
Phyllis (*his sister*) DOROTHY TATE
Harvey (*his uncle*) BILL CASTLING
Bernard (*Phyllis's husband*) IVAN PORTER
Rachel (*Belinda's sister*) NORMA NEAL
Eddie DENNIS HALL
Pattie (*Eddie's wife*) MOIRA DAVIDSON
Clive GEOFF CLIFFORD-BROWN

Produced by WALTER HOWELL
Stage Manager ALLAN DAVISON
Lighting MARTIN JOHNSON
Sound GERRY CLAYTON
Wardrobe MARY DAVISON
Props JACQUI WASSELL
Prompt SHEILA ARCHER

The action takes place in the home of Neville and Belinda during the Christmas period.

ACT I

Scene 1 Christmas Eve, 7.30 p.m.
Scene 2 Christmas Day, Noon
Scene 3 Christmas Day, Midnight

(INTERVAL)

ACT II

Scene 1 Boxing Day, 3.30 p.m.
Scene 2 December 27th, 5.15 a.m.



THE ISLAND'S LEADING PERFORMERS OF FARCE

present:

“WHO GOES BARE?”

AN HILARIOUS FARCE

By RICHARD HARRIS and LESLIE DARBON

YOU LAUGHED AT “A BEDFULL OF FOREIGNERS,”

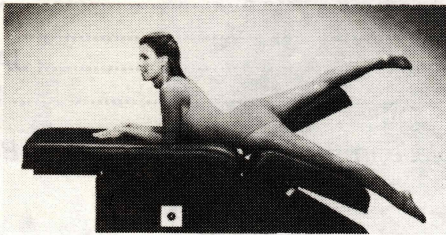
WAIT UNTIL YOU SEE THIS!!

at this Theatre on:

MAY 11th, 12th & 13th, at 8.00 p.m.

PUT IT IN YOUR DIARY NOW!!

**IF EXERCISE
SEEMS TOO MUCH LIKE WORK,**



**MAYBE IT'S TIME YOU LAID DOWN
ON THE JOB.**

Ever notice that getting in shape sounds like a great idea until you actually get around to it? You may have discovered that results don't come overnight, but muscle strain and soreness often do.

INTRODUCING THE NO-SWEAT WORKOUT™

At Slender You® Figure Salons, we're going to reshape the way you feel about exercise. We have six different motorized tables that do the hard work for you. Each one is designed to exercise a specific part of your body—stomach, hips, legs and upper arms.

Rather than building muscle (which conventional workouts often do), the Slender You® concept helps to tone and firm your muscles, while breaking down unwanted “cellulite.” And unlike traditional exer-

cise, a Slender You® shape-up leaves you feeling refreshed and energized, not fatigued and out of breath.

YOUR FIRST SESSION IS ON US.

We're so positive you'll like what you find at Slender You®, we're offering a free first workout and figure analysis. You can see how you like it, and then decide whether to make another appointment. You're under no obligation.

NO CONTRACTS OR MEMBERSHIP FEES.

At Slender You®, you pay as you go. No expensive memberships, no advance payments and no obligations. You can quit whenever you'd like. So try the Slender You® workout. You've got nothing to lose but

inches and pounds. And that's where we can help.



2, Stanley View.

Tel: Douglas 661728

AWARD LIST — FOR FULL LENGTH PLAYS

1st — THE 'F. M. CUBBON TROPHY'

Donated by the late Rev. Canon and F. M. Cubbon.

2nd — THE 'DICK CRAINE CUP'

3rd — THE 'JACK LYNCH CUP'

— INDIVIDUAL AWARDS —

THE 'VANDA LAMBERT AWARD'

for the most outstanding performance of the week — *(female)*.

THE 'JUNE EDGE CUP'

for the most promising performance of the week — *(under 21 years)*.

THE 'S. EDWARD BENN AWARD'

for the most outstanding performance of the week — *(male)*.

THE 'MOLLIE CORKILL AWARD'

for the best supporting performance — *(female)*.

THE 'DAVID KENNAUGH AWARD'

for the best supporting performance — *(male)*.

THE ADJUDICATORS 'OLGA GRAY AWARD'

for any outstanding individual contribution.

THE 'JOHN BRYAN AWARD'

for audience participation.

THE 'JACKIE BANNER AWARD'

for comedy.

THE 'RENE SAVAGE AWARD'

for costume and make-up.

We are grateful to the OLGA COWELL BEQUEST FUND which provides for mementoes to be presented to each participating team.

The following is the basis of marking which will be used by the Adjudicator:

ACTING — 40 PRODUCTION — 35 STAGE PRESENTATION — 10
ENDEAVOUR, ORIGINALITY AND ATTAINMENT — 15

FINAL ADJUDICATION ON FRIDAY, 31st MARCH, 1989

— NOTICE TO PATRONS —

EMERGENCY EVACUATION PROCEDURE

If you are asked to evacuate the building, please do so as quietly as possible and leave by the nearest available exit to which you are directed by the staff.

In the event of any emergency which by necessity requires that this theatre be evacuated. You, as a member of the audience, are requested to co-operate by paying strict attention to any instructions either by announcement from the stage, or given verbally by a member of the staff of this theatre.

DO NOT RUN OR PUSH.

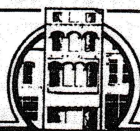
DO NOT turn back or stop to collect personal belongings.

DO NOT act in a manner that could cause obstruction to emergency services attending the building to deal with the emergency.

Avoiding panic at all costs proceed in an orderly manner to a place of safety away from the building.

N.B.

- (a) All gangways, passages and aisles shall be kept entirely free from chairs or any other obstruction.
- (b) Persons shall not be permitted to stand in any gangway or aisle.
- (c) The safety curtain shall at all times be maintained in working order and shall be lowered and raised during the time of every performance.



WAREHOUSE
R · E · S · T · A · U · R · A · N · T

SPECIAL ANNOUNCEMENT

Have you discovered the best kept secret on Market Hill?

We are all just back from our "Jollydays" and ready to welcome back all our customers — old and new!

Why not come down and try out our new menu (Brill, Turbot and Queenies) or you can even invent your own pizza!

Specialities:

**Shark Steaks - Tuna Steaks - Large Sardines
Fresh Baked Pizzas - Charcoal Grilled Steaks**

TELEPHONE: 23737

P.S. — Children always welcome

PREVIOUS WINNERS

- 1950 — The Thirteen Players, Bristol in "Canaries Sometimes Sing."
1951 — The Phoenix Theatre Group, Dublin in "Michaelmas Eve."
1952 — The Phoenix Theatre Group, Dublin in "Lovers Meeting."
1953 — The Withington Players, Manchester in "The Tudor Wench."
1954 — The Thirteen Players, Bristol in "Candlelight."
1955 — The Thirteen Players, Bristol in "Frolic in April."
1956 — Withington Players, Manchester in "The Gentle Arm."
1957 — Theatre One, Edinburgh in "Dark of the Moon."
1958 — Theatre One, Edinburgh in "Don't Listen Ladies."
1960 — Theatre Arts Club, Edinburgh in "All My Sons."
1961 — Theatre Arts Club, Edinburgh in "Diary of Anne Frank."
1962 — Rushen Amateur Dramatic Society in "Ladies in Retirement."
1963 — Tudor Players, Manchester in "Love and Lunacy."
1964 — Withington Players, Manchester in "Billy Liar."
1965 — The Fylde Coast Players, St. Annes in "The Rehearsal."
1967 — The Fylde Coast Players, St. Annes in "Fallen Angels."
1968 — Tudor Players, Manchester in "The Castle of Deception."
1969 — Litherland Drama Group in "Oedipus Rex."
1970 — Green Room Players, Blackpool in "Spring and Port Wine."
1971 — Legion Players, Douglas in "Angels in Love."
1972 — Tudor Players, Manchester in "Relatively Speaking."
1973 — Blackpool College Theatre Group in "Home."
1974 — Formby Theatre Club in "Ghosts."
1975 — Tudor Players, Manchester in "Plaza Suite."
1976 — No Competition.
1977 — Tudor Players, Manchester in "The Price."
1978 — Dilys Guite Players, Sheffield in "Blithe Spirit."
1979 — Theatre One, Thornton in "Home."
1980 — The Players, Cheadle Hulme in "Table Manners."
1981 — Abbey Actors, Belfast in "Echos."
1982 — Group Theatre Company, London in "Rashomon."
1983 — Theatre One, North Fylde in "Exit the King."
1984 — Parkside Players in "Da."
1985 — Tudor Players, Manchester in "Bedroom Farce."
1986 — Tudor Players, Manchester in "Accrington Pals."
1987 — Clarence Players, Belfast in "The Goodbye People."
1988 — Martello Productions, County Wicklow in "Children of a Lesser God."

ISLE OF MAN BRASS BAND FESTIVAL 1989

VILLA MARINA, DOUGLAS

Saturday 27th & Sunday 28th May, 1989

Sponsored by the I.O.M. Department of Tourism in conjunction with
The Manx Youth Band

Patron: H. Mortimer Esq., C.B.E.

TWO FULL DAYS OF THE VERY BEST IN BRASS BAND
ENTERTAINMENT WITH PERFORMANCES BY BANDS FROM
ALL OVER THE UNITED KINGDOM

Saturday 27th May

9.30 a.m. - Entertainment Contest - Section 'B'
(3rd, 4th & Youth Section)

6.30 p.m. - Grand Marching Contest
(Loch Promenade, Douglas)

Sunday 28th May

9.30 a.m. - Entertainment Contest - Section 'A'
(Championship & 2nd Section)

8.00 p.m. - Prize Presentation & Gala Evening

Contest Secretary: Ian Pendlebury (Manx Youth Band)
Tel: (0624) 76020

ADMISSION

Single Day Tickets	£1.50	Two Day Tickets	£2.50
Children/Senior Citizen	50p	Children/Senior Citizen	75p

Tickets available from the **VILLA MARINA BOX OFFICE**