



MANX AMATEUR DRAMA FEDERATION
(With the Co-operation of the I.O.M. Arts Council)



GAIETY THEATRE : DOUGLAS

14th April to 20th April 1990

Presentation of Awards by:

Mr. Ronnie Arscott - Tudor Players, Manchester

on

FRIDAY, 20th APRIL, 1990.

Curtain up — 7.30 p.m. Sunday — 8.00 p.m.
Complete Programme — 50p

Let **CONISTER**



give you the
CREDIT



Whether upgrading your car or improving your home let us
show you how easy it can be

Conister Trust Limited

Our Conditional Sale Agreements have been developed
specifically for the Manx market and offer Tax Relief on the
interest together with very competitive rates.

Next time you need finance insist on a quotation
from the experts.

**Conister Trust Limited
Conister House
16 - 18 Finch Road
Douglas
Isle of Man**

Telephone : (0624) 74455

Manx Amateur Drama Federation

Affiliated to N.D.F.A. in co-operation with
ISLE OF MAN ARTS COUNCIL

Patrons:

His Excellency The Lieutenant Governor,
Major General Sir Laurence New, C.B., C.B.E.
and Lady New.

President: Mrs. Jane Brill.

Chairman: Mrs. R. Savage, A.D.B.

Vice-Chairman: Mr. S. Caine

Secretary: Mrs. Barbara Gale.

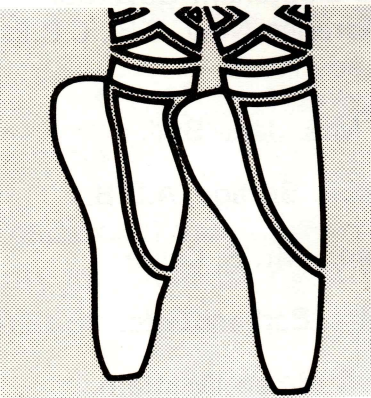
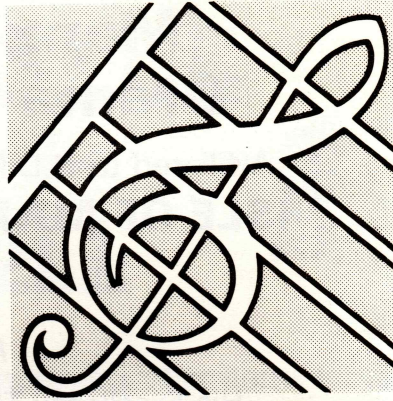
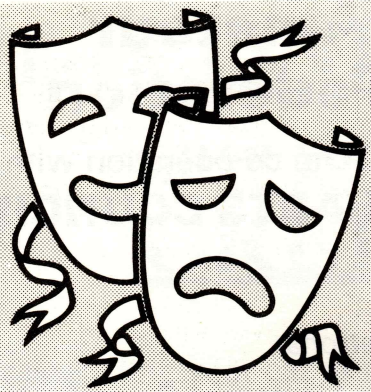
Treasurer: Mr. Stephen Whittam.

Committee:

Representatives of: Albany Theatre Group, Arbory Players, Manx National Youth Theatre. Douglas Choral Union, Legion Players, Manx Operatic Society, Raven Players, Rushen Players, St. Mary's Players, Service Players, and *Life Members:* Mrs. J. Brill, Mrs. M. Corkill, Miss K. Cowin, Miss M. Devereau, Mrs. O. Gray, Mrs. J. Hall, Mrs. J. Webb, Mr. M. J. Lees.

**The Committee wish to express their grateful thanks to:
THE ARTS COUNCIL, The Friends of the Gaiety,
Department of Tourism, Gaiety Management, Isle of Man
Bank and to everyone who has contributed to the success
of the Festival.**

B a n k i n g S e r v i c e s



**PERFORMING ON
YOUR BEHALF.**



**The Royal Bank of Scotland
(I.O.M.) Limited**

A subsidiary of The Royal Bank of Scotland Group plc
Registered Office: Victory House, Prospect Hill, Douglas, Isle of Man.
Telephone: Douglas (0624) 29111 Telex: 628214

GOOD EVENING, LADIES & GENTLEMEN

In my capacity as Chairman of the Manx Amateur Drama Federation I extend a warm welcome to all our visitors and friends to this the 39th Easter Festival and in accordance with the usual high standard of this Festival we have accepted only 6 entries this year and on Tuesday night break with tradition and ask you all to join us at a special social evening featuring the "Barrow Poets" kindly arranged by the Isle of Man Arts Council whose continuous support of the Festival is greatly appreciated.

Having been associated with this Festival both as a Competitor and a Committee member for over 25 years I know how much hard work is needed to ensure its success and thank all the members of my Committee for their enthusiasm and professionalism.

I look forward to renewing friendships both old and new and give my best wishes to you all.

Mrs. Rene Savage A.D.B.
CHAIRMAN



Member of the Legion Players until 1980;
Douglas Choral from early 1960's till today;
Founder member of the Albany Theatre Group in 1979;
Vice Chairman of the Federation 1987/88, elected Chairman in July 1989.
Actress in her own right.
Producer, and now Teacher of Drama.

THE PLAYS

ANTIGONE by Jean Anouilh

This play was first performed in German-occupied France, and its theme is resistance to oppression.

It is based on the Greek tragedy "Antigone", who tried to bury her brother's corpse against the orders of her uncle Creon, the Dictator.

AGNES OF GOD by John Pielmier

Dr. Martha Livingstone, a court appointed Psychiatrist, is asked to determine the sanity of a young Nun accused of murdering her own baby. This powerful drama was an outstanding long running success on Broadway and at the Greenwich Theatre London.

DARK OF THE MOON by Howard Richardson and William Berney

This play is an American folk story based on the ballad of Barbara Allen. "A witch-boy from the mountain came a-pinin' to be human, For he had seen the fairest gal, a gal named Barbara Allen". "Oh Conjur' man, Oh Conjur' man, please do this thing I'm wanting, Please change me to a human man, for Barbara I'd be courting".

ACCIDENTAL DEATH OF AN ANARCHIST by Dario Fo (Adapted by Gavin Richards)

A sharp and hilarious satire on police corruption in Italy. The play concerns the case of an anarchist railway worker who "fell" to his death from a police headquarters window in 1969. He was said to have "jumped" past seven policemen, through a wide open window on a freezing night,.....!

ARMS AND THE MAN by George Bernard Shaw

"Arms and the Man", is the earliest of Shaws' "pleasant" plays. It is both amusing and thought provoking and, although written in 1894, it is as fresh and up-to-date today. Although the action of the play is set in Bulgaria in 1885, Shaw could have chosen any Country or Nationality without altering the nature or habits of its characters.

THE TEMPEST by William Shakespeare

A comedy of romance. Shakespeare began and ended his work with comedies and at its conclusion stands "The Tempest" (1611). It was he who gave colour and composition to the "Comedy of Romance". In "The Tempest" we have a drama written by a comic playwright whose vision of life had been deepened and enriched, indeed it could be said that "The Tempest" is a deliberately conceived farewell by William Shakespeare to the stage.

Brian Sanders L.R.A.M., L.G.S.M.

Brian Sanders joined the Donald Wolfitt Shakespeare Company at the age of 16 and toured the U.K., France, Belgium and Egypt. In 1956 he left the theatre to take up a career in Education. He is a qualified teacher of Speech, Drama and English and for many years was Head of the Speech and Drama Department of a constituent college of London University.

He first broadcast in 1960 when he wrote and narrated programmes on Acting, the Theatre and on Shakespeare. From 1970 to 1979 he wrote and presented "*Movement & Drama*" for BBC Schools Radio.

Nowadays he broadcasts regularly in Radio Drama and has acted with Peter Barkworth, Anna Massey, Richard Pasco and, most recently, in "*A Tale of Two Cities*" with Charles Dance.

He has extensive experience of teaching Professional People in all aspects of Presentation and runs courses in Effective Speaking.

He was elected to the Guild of Drama Adjudicators in 1967 and has served on the Council.



More Service... At Home... and at Work...

With 80 years' experience to our name, we are proud to offer you unrivalled knowledge and expertise — guaranteeing more quality and care with each article we handle.

ALL-ISLAND SERVICE

- * LAUNDRY
- * DRY CLEANING
- * RENTAL SERVICES
- * CARPET AND
CONTRACT CLEANING

clucas cleaners limited

of TROMODE

Telephone: Douglas 73961

For Quality that shows



AGA COOKERS
AGAMATIC BOILERS
SOLE DISTRIBUTOR

Rayburn

COOKERS
ROOM HEATERS
MAIN DEALERS

CONLBROOKDALE
MULTI-FUEL STOVES

SERVICE
SPARE PARTS
REPAIRS & MAINTENANCE

Black's

FIREPLACES LTD.

MYLROIE HOUSE
39 NEW ROAD
LAXEY

Telephone: 861212

SATURDAY, 14th APRIL, 1990

BRIGSTOWE THEATRE COMPANY

present:

"ACCIDENTAL DEATH OF AN ANARCHIST"
by **DARIO FO**

CAST

ManiacTOM PHILLIPS
Bertozzo.....ROBERT RUSSELL
Pissani.....DON BROWN
Constable.....PETER COOK
Superintendent.....JOHN MARKLEY
FelettiFIONNULA ROCHFORD

Play Produced by LES MOUNTFORD
Assisted by PAULETTE VINEY

Stage Management....SARA BLAKEMORE-PHILLIPS
MIKE PRICE

Lighting/SoundTIM BARTLETT

Time: The Present

Interval of 20 minutes between Acts 1 and 2

Accidental death of an Anarchist is a sharp, and clever satire on Police corruption in Italy. It concerns the case of an anarchist railway worker who, it was claimed "fell" to his death from a Police Headquarters window in 1969.

DID HE FALL, OR WAS HE PUSHED?

**For the local business that's
going places . . .**

Alexander Stenhouse is one of the major insurance brokers and insurance managers in the Isle of Man providing insurance, risk management and employee benefits advice and services to a growing number of businesses, large and small.

With this experience and the expertise of our highly skilled staff, we know the special needs of the local business environment. We also have the resources and support of the world's largest retail insurance broker behind us, with 300 offices in 72 countries. We're a powerful partner for the business in the Isle of Man that's going places.

ALEXANDER STENHOUSE (ISLE OF MAN) LIMITED
28 Athol Street, Douglas
Tel: 0624 73325 Telex: 628453 Fax: 0624 23664



A ALEXANDER STENHOUSE
(ISLE OF MAN) LTD.
Local and International

A ALEXANDER STENHOUSE
INTERNATIONAL SERVICES
(ISLE OF MAN) LTD.

**Year round Fast Film
Processing by the
Island's only
1 Hour Film
Processing
Service**



The Kodak Express Laboratory

**2-4 Market Hill,
Douglas Tel: 28022**

SUNDAY, 15th APRIL, 1990

COMBINED THEATRE GROUP, ESSEX

present:

"THE TEMPEST"
by **WILLIAM SHAKESPEARE**

CAST

Alonso, King of NaplesDEREK PEDDER
Sebastian, his brother.....LAWRENCE ALLWRIGHT
Prospero, the right Duke of Milan.....JULIAN WHITE
Antonio, his brother, the usurping
 Duke of MilanKENNETH SAUNDERS
Ferdinand, son to the King of NaplesKEN HAZELDINE
Gonzalo, an honest old councillorBEN BOAR
Adrian, a Lord.....MICHAEL NASH
Francisco, a Lord.....COLIN DADY
Caliban, a savage and deformed slavePETER WILSON
Trinculo, a jesterIAN O'CONNOR
Stephano, a drunken butlerGEORGE PENFIELD
Boatswain.....KENNETH HARMON
Miranda, daughter to Prospero.....ANGELA O'CONNOR
Ariel, an airy spiritJULIE GILBERT
Iris..... Goddesses FAY PEDDER
Ceres..... in the JOAN STANSFIELD
Juno..... Masque DORRIE HAMILTON
Nymphs.....ELEANOR BAVIN, KIRSTINE MACRAE

The play directed by ALBERT JEANES

Stage ManagerBARBARA MARSHALL
Assistant Stage Manager....ELIZABETH SAUNDERS
SettingPETER WILSON
Lighting.....DAVID SHORT
Costumes.....JOAN STANSFIELD
Wardrobe.....RENEE MILLS

The Scene: An uninhabited island.

There will be one interval approximately half-way through the play

MONDAY, 16th APRIL, 1990

GROUP THEATRE COMPANY, LONDON

present:

"ANTIGONE"

By JEAN ANOUIHL

Translated by BARBARA BRAY

CAST

Prologue JOYCE THOMAS
Antigone JUDITH BECKETT
Nurse JULES SYKES
Ismene HAYLEY CLARK
Haemon RICHARD CHRICHTON
Creer BERNARD THOMAS
Page MATTHEW MACKIN
Jonas RON BLACKBURN
Binns GENE ROBERTSON
Shout STEPHEN ALEXANDER
Eurydice LANA CHACKEY
Chorus SHARON CHACKEY

Directed by JOYCE THOMAS

Lighting SEAN THOMAS
Staging THE COMPANY
Costumes JOY PEREZ & THE COMPANY
Prompt LANA CHALISEY

There will be one interval of 15 minutes half-way through the play.

TUESDAY, 17th APRIL, 1990

(No performance at the theatre)

SOCIAL EVENING

at

BUSHY'S BREW PUB

VICTORIA STREET, DOUGLAS

Featuring the famous

BARROW POETS

8.00 p.m. 'till 12 Midnight

TICKETS — £3.00

Special price for team and club members

Entrance by ticket **ONLY**

THE BARROW POETS

An entertainment of words and music

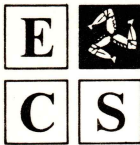
Speakers:

Heather Black, Cicely Herbert, William Beably-Wright, Gerard Benson.

Musicians:

Susan Baker (violin, viola d'amore, mandoline & Irish harp)
Antony Saunders (oboe, cor anglais and keyboard)

Probably the most famous of all poetry performers, the **BARROW POETS** have been continuously successful in entertaining audiences with their varied and original programmes of poetry and music. The present company has remained unchanged since 1963, and together they have played in every major U.K. Festival, completed four tours in the U.S.A., visited Germany and Holland, and made eight records. More recently listeners to Radio 3 have been entertained by their programmes on 'The Elements' and 'The Six Senses'. Wherever they perform — in theatres, concert halls or in similar more intimate settings, an evening with the **BARROW POETS** is always a diverse happening with items adeptly contrasted so that a whole range of emotions is experienced in a single performance.



EUROPEAN CORPORATE SERVICES (ISLE OF MAN) LIMITED

We advise on and organise the structuring of your financial affairs to ensure maximum asset protection and tax efficiency (we do not offer investment advice, but work in conjunction with your professional investment advisers and leading banks).

We are a subsidiary of the European Corporate Services Group (Capital US\$1 million) which also has offices in Gibraltar, Spain, Jersey, Hong Kong, Switzerland, Cyprus, the Cayman Islands and associates in Bermuda and the United Kingdom.

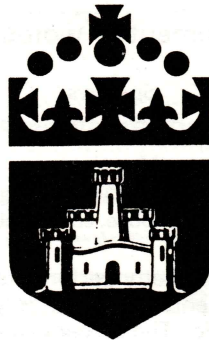
Our services include:

- ★ International Tax/Pensions Planning and Advice
- ★ Offshore Investment and Trading Company Administration
- ★ Trustee and Fiduciary Services
- ★ Expatriate Employment Company Services
- ★ Ship and Yacht Registration and Ownership

For further details of our services in the Isle of Man and worldwide, please write to:

**The Managing Director,
European Corporate Services (IOM) Limited,
P.O. Box 95, Victory House, Prospect Hill, Douglas, Isle of Man
Telephone: 0624 27321 Telex: 629222 Factor G Fax: 0624 24530**

For all your Insurance requirements.



Tower Insurance

**19 Athol Street, Douglas, Isle of Man.
Telephone: (0624) 73446**

WEDNESDAY, 18th APRIL, 1990

MARTELLO PRODUCTIONS

present:

"AGNES OF GOD"
By JOHN PIELMIER

CAST

Agnes.....SIOBHAN MORIARTY
Dr. Martha LivingstoneSANDRA MULLEN
Mother Miriam Ruth.....AINE SPARKSMAN

Directed by TREVOR BAILEY

Stage Manager.....JON TALLON
Asm'sDEIRDRE BRYAN, DYMPHNA CASEY
MARY KENNY, JOYCE TODD
Lighting and SoundMICHAEL CANN
Assisted byBRIAN CANN, BRENDAN DORGAN

Time: The Present

The action of the play takes place in the mind of Dr. Martha Livingstone

One Interval of 15 minutes between Act I and Act II



**THE ISLAND'S LEADING
PERFORMERS OF FARCE**

present:

“A CHORUS OF DISAPPROVAL”

by Alan Ayckbourn

with additional music from the:

BEGGARS OPERA by JOHN GAY

at this Theatre on:

MAY 17th, 18th & 19th, at 8.00 p.m.

DON'T MISS THIS AWARD WINNING PLAY

(“Painfully, heartbreakingly funny”) The Guardian



TAKE HOME THE ISLE OF MAN

**Unique Gifts capturing the
Heritage of Mann**

Legends

TYNWALD MILLS CRAFT CENTRE, ST. JOHN'S

THURSDAY, 19th APRIL, 1990

THE SEDGEFIELD PLAYERS, COUNTY DURHAM

present:

"DARK OF THE MOON"

By HOWARD RICHARDSON and WILLIAM BERNEY

CAST

John	GEOFF CLIFFORD-BROWN
Conjur Man	IVAN PORTER
The Dark Witch	VIV BROOMHEAD
The Fair Witch	THELMA FLOOD
Conjur Woman	DOROTHY TATE
Barbara Allen	SARAH CROSS
Mr. Allen	DAVID GILL
Mrs. Allen	NORMA NEAL
Floyd Allen	MIKE INGHAM
Marvin Hudgens	DENNIS HALL
Mrs. Bergen	JACQUI WASSELL
Ella Bergen	LIZ FLANAGAN
Mrs. Summey	MOIRA DAVISON
Edna Summey	LYNDA DAVISON
Miss Metcalfe	MARIANNE FOSTER
Hank Gudger	GERRY CLAYTON
Preacher Haggler	KEN BROWN
Uncle Smellicue	DAVID GILL
Mr. Atkins	IVAN PORTER

Directed by WALTER HOWELL

Stage Manager	ALLAN DAVISON
Lighting	RAY TATE
Sound	BILL HOPPS & DAVID GILL
Wardrobe	MARY DAVISON
Props	LYNDA DAVISON
Prompt	SHEILA ARCHER

The action takes place in and around the Smoky Mountains of North America
not so long ago.

ACT I

Scene 1 The Peak of a Ridge in the Smoky Mountains.
Scene 2 The Central Square of Buck Creek.
Scene 3 Outside the Allen cabin on Chunky Gal Mountain.
Scene 4 The General Store of Buck Creek.

— Interval of 15 minutes —

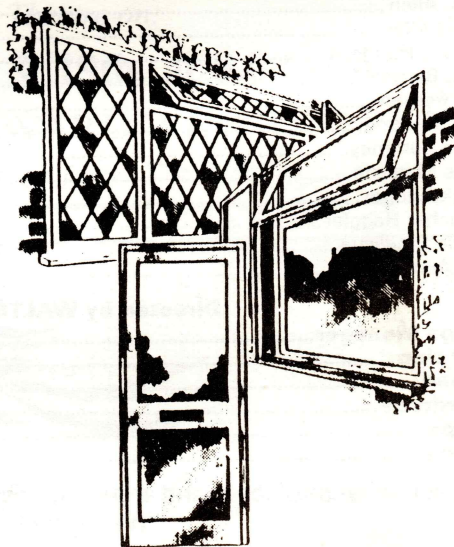
ACT II

Scene 1 A Clearing in the Woods.
Scene 2 Barbara and John's cabin.
Scene 3 The Mountain Ridge.
Scene 4 The Church in Buck Creek.
Scene 5 The Mountain Ridge.

Heywood Quiggin Ltd.

Manufacturers and Installers

- uPVC and Aluminium Windows
- Patio and Residential Doors
- Shopfronts
- Secondary Glazing
- Sealed Double Glazing Unit Manufacturers
- Glass Merchants (Pilkington's Main Agents). Trade and Retail
- Mirrors, Louvres, Putty
- Domestic and Commercial Suppliers



For Full Details Telephone

**DOUGLAS 23496
Lake Road, Douglas**

FRIDAY, 20th APRIL, 1990

FYLDE COAST PLAYERS, LYTHAM

present:

"ARMS AND THE MAN"
By **GEORGE BERNARD SHAW**

CAST

Raina Petkoff.....FIONA MULLANEY
Catherine Petkoff.....MICHELLE BROWN
Louka.....JANE BARNACLE
Captain Bluntschli.....KEITH CARTMELL
Russian Officer.....MARTIN DRURY
Nicola.....KEITH ROGERS
Major Petkoff.....GLYNN MORTON
Major Sergius Saranov.....ALAN VEALE

Director and set design: HEATHER CARTMELL

Stage Manager.....SIMON MOSS

Set & Properties...JULIE KELLY & CHRIS BUCKINGHAM

Lighting.....TONY EDWARDS

The action takes place in Major Petkoff's house in Bulgaria

ACT I

Raina's bedroom.....November 1885 — Night.

— 5 Minute Interval —

ACT II

The garden.....March 1886 — Morning.

— 15 Minute Interval —

ACT III

The library.....The same day — Afternoon

On the Isle of Man.

Oil provides the cheapest, cleanest,
safest and most economical form of
heating for home, office or factory.

Manx Petroleums give you
a fast efficient delivery
service second to none.



SHELL DISTRIBUTORS FOR THE ISLE OF MAN

Manx Petroleums

First for Service.

Telephone: DOUGLAS 74652

22 mins.

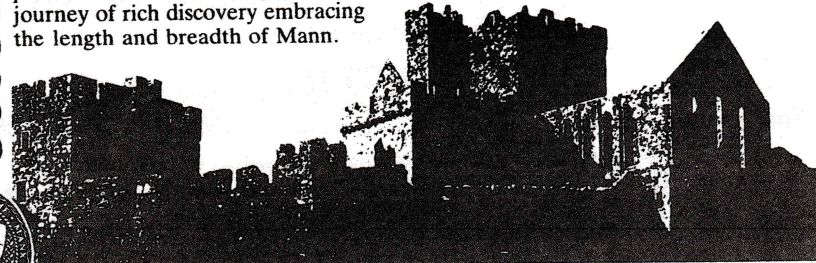
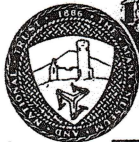
• D I S C O V E R •

The Story of Mann

'The Story of Mann' begins at the Manx Museum, Douglas, where a specially produced film portrayal of Manx history compliments the award-winning gallery displays.

This showcase of Manx Heritage provides the ideal starting point to a journey of rich discovery embracing the length and breadth of Mann.

From the former seats of Kings and Lords of Mann at Peel Castle on St. Patricks Isle and Castle Rushen in Castletown, to Cregneash, the living, working, 19th century Manx crofting village; the unique history of Mann will fascinate explorers young and old.



The Manx Museum and National Trust This Tashtee Vannin
As Treisht Ashoonagh

AWARD LIST — FOR FULL LENGTH PLAYS

1st — THE 'F. M. CUBBON TROPHY'

Donated by the late Rev. Canon and F. M. Cubbon.

2nd — THE 'DICK CRAINE CUP'

3rd — THE 'JACK LYNCH CUP'

— INDIVIDUAL AWARDS —

THE 'VANDA LAMBERT AWARD'

for the most outstanding performance of the week — *(female)*.

THE 'JUNE EDGE CUP'

for the most promising performance of the week — *(under 21 years)*.

THE 'S. EDWARD BENN AWARD'

for the most outstanding performance of the week — *(male)*

THE 'MOLLIE CORKILL AWARD'

for the best supporting performance — *(female)*.

THE 'DAVID KENNAUGH AWARD'

for the best supporting performance — *(male)*.

THE ADJUDICATORS 'OLGA GRAY AWARD'

for any outstanding individual contribution.

THE 'JOHN BRYAN AWARD'

for audience participation.

THE 'JACKIE BANNER AWARD'

for comedy.

THE 'RENE SAVAGE AWARD'

for costume and make-up.

THE 'RAVEN PLAYERS AWARD'

for the best producer/director.

We are grateful to the OLGA COWELL BEQUEST FUND which provides for mementoes to be presented to each participating team.

The following is the basis of marking which will be used by the Adjudicator:

Acting - 40 Production - 35 Stage Presentation - 10 Endeavour, Originality & Attainment - 15

FINAL ADJUDICATION ON FRIDAY, 20th APRIL, 1990

— NOTICE TO PATRONS —

EMERGENCY EVACUATION PROCEDURE

If you are asked to evacuate the building, please do so as quietly as possible and leave by the nearest available exit to which you are directed by the staff. In the event of any emergency which by necessity requires that this theatre be evacuated. You, as a member of the audience, are requested to co-operate by paying strict attention to any instructions either by announcement from the stage, or given verbally by a member of the staff of this theatre.

DO NOT RUN OR PUSH.

DO NOT turn back or stop to collect personal belongings.

DO NOT act in a manner that could cause obstruction to emergency services attending the building to deal with the emergency.

Avoiding panic at all costs proceed in an orderly manner to a place of safety away from the building.

N.B.

- (a) All gangways, passages and aisles shall be kept entirely free from chairs or any other obstruction.
- (b) Persons shall not be permitted to stand in any gangway or aisle.
- (c) The safety curtain shall at all times be maintained in working order and shall be lowered and raised during the time of every performance.

Bushy's Brew Pub

'Recommended in the 1988, 1989 & 1990 Good Beer Guide'

DELICIOUS HOME-COOKED GOOD VALUE
MEALS SERVED FROM 12 p.m. - 2.30 p.m.

VEGETARIAN DISHES A SPECIALITY

**THE REAL TASTE OF GOOD, STRONG ALE,
BREWED ON THE PREMISES**

VICTORIA STREET · DOUGLAS · Tel: 75139

(Opposite the Jubilee Clock)

The "refreshing" venue for the refreshing

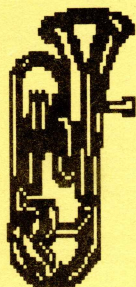
BARROW POETS



PREVIOUS WINNERS

- 1950 — The Thirteen Players, Bristol in "Canaries Sometimes Sing."
1951 — The Phoenix Theatre Group, Dublin in "Michaelmas Eve."
1952 — The Phoenix Theatre Group, Dublin in "Lovers Meeting."
1953 — The Withington Players, Manchester in "The Tudor Wench."
1954 — The Thirteen Players, Bristol in "Candlelight."
1955 — The Thirteen Players, Bristol in "Frolic in April."
1956 — Withington Players, Manchester in "The Gentle Arm."
1957 — Theatre One, Edinburgh in "Dark of the Moon."
1958 — Theatre One, Edinburgh in "Don't Listen Ladies."
1960 — Theatre Arts Club, Edinburgh in "All My Sons."
1961 — Theatre Arts Club, Edinburgh in "Diary of Anne Frank."
1962 — Rushen Amateur Dramatic Society in "Ladies in Retirement."
1963 — Tudor Players, Manchester in "Love and Lunacy."
1964 — Withington Players, Manchester in "Billy Liar."
1965 — The Fylde Coast Players, St. Annes in "The Rehearsal."
1967 — The Fylde Coast Players, St. Annes in "Fallen Angels."
1968 — Tudor Players, Manchester in "The Castle of Deception."
1969 — Litherland Drama Group in "Oedipus Rex."
1970 — Green Room Players, Blackpool in "Spring and Port Wine."
1971 — Legion Players, Douglas in "Angels in Love."
1972 — Tudor Players, Manchester in "Relatively Speaking."
1973 — Blackpool College Theatre Group in "Home."
1974 — Formby Theatre Club in "Ghosts."
1975 — Tudor Players, Manchester in "Plaza Suite."
1976 — No Competition.
1977 — Tudor Players, Manchester in "The Price."
1978 — Dilys Guite Players, Sheffield in "Blithe Spirit."
1979 — Theatre One, Thornton in "Home."
1980 — The Players, Cheadle Hulme in "Table Manners."
1981 — Abbey Actors, Belfast in "Echos."
1982 — Group Theatre Company, London in "Rashomon."
1983 — Theatre One, North Fylde in "Exit the King."
1984 — Parkside Players in "Da."
1985 — Tudor Players, Manchester in "Bedroom Farce."
1986 — Tudor Players, Manchester in "Accrington Pals."
1987 — Clarence Players, Belfast in "The Goodbye People."
1988 — Martello Productions, County Wicklow in "Children of a Lesser God."
1989 — Group Theatre Company, London in "Hard Times."

ISLE OF MAN BRASS BAND FESTIVAL



1990



**Saturday 26th & Sunday 27th May
(Spring Bank Holiday Weekend)**

ENTERTAINMENT CONTEST

(Twenty-Five Minutes Own Choice)

Class 'A' Championship & Second Section Bands

Class 'B' 3rd, 4th & Youth Bands

ALSO GRAND MARCHING CONTEST

PRIZE FUND £4,600

**SPECIAL PACKAGE DEALS FOR ALL BANDSMEN & SUPPORTERS
INCLUDING FERRY TRAVEL**

ACCOMMODATION (Bed & Full Breakfast or Half Board)
AND ALL TRANSFERS IN THE ISLE OF MAN
FREE REHEARSAL FACILITIES

To: Mr I. Pendlebury (Contest Secretary), 27 Marathon Avenue, Douglas, Isle of Man. Tel: (0624) 76020.

PLEASE SEND DETAILS OF ENTRY TO I.O.M. BRASS BAND FESTIVAL 1990

BAND _____

CLASS'A'/CLASS'B'/MARCHING _____ NATIONAL GRADING _____

BAND SECRETARY _____ TEL. NO. _____

ADDRESS _____

_____ POST CODE _____