



Manx Amateur Drama Federation  
Conastey Drama Amateyragh Vannin  
Easter Festival of Full Length Plays

2  
0  
0  
4

WAKEFIELD

V  
E  
R

IN YER SPACE

M  
A  
N  
R  
T  
E

SEDGEFIELD

L  
PHOENIX

Supported by the Isle of Man ARTS COUNCIL

£2



**COWLEY  
GROVES**  
Property  
Shops

*The Island's No 1  
Property Website*



Register for:- Automatic mobile phone & email property alerts and much more...

"property shopping from a whole new angle"

[www.cowleygroves.com](http://www.cowleygroves.com)

# EASTER FESTIVAL OF FULL LENGTH PLAYS 2004

<b>Saturday, 10th April</b>	'The Woman Who Cooked Her Husband ' by Debbie Isitt In Yer Space, Arnold School, Blackpool.
<b>Sunday, 11th April</b>	'Knuckle' by David Hare Martello Productions, Dun Laoghaire, Eire.
<b>Monday, 12th April</b>	'Hobson's Choice' by Harold Brighouse Wakefield Little Theatre, Wakefield.
<b>Tuesday, 13th April</b>	'Entertaining Mr. Sloane' by Joe Orton The Phoenix Theatre Company, New College, Swindon.
<b>Wednesday, 14th April</b>	'The Prisoner of Second Avenue' by Neil Simon Tudor Players, Manchester.
<b>Thursday, 15th April</b>	'Theresé Raquin' by Emile Zola. Adapted by Leslie Sands Everyman Productions, Sligo, Eire.
<b>Friday, 16th April</b>	'A Kiss on the Bottom' by Frank Vickery Sedgefield Players, County Durham

## THE AWARDS

Final Adjudication and presentation of the Awards will take place after the play on Friday, 16th April

**The Awards will be presented by The Chairman  
of the Manx Amateur Drama Federation, Mr Michael J Lees.**

**The F.M. Cubbon Trophy ~ Best Play**

**The Dick Craine Cup ~ First Runner Up**

**The Jack Lynch Cup ~ Second Runner Up**

<b>The Vanda Lambert Award</b>	Best Female Performance (Memento Donated by Jean Webb)
<b>The Edward S. Benn Award</b>	Best Male Performance (Memento Donated by Mark Clift)
<b>The June Edge Cup</b>	Most Promising Performance under 21
<b>The Mollie Corkill Award</b>	Best Female Performance in a Supporting Role
<b>The David Kennaugh Award</b>	Best Male Performance in a Supporting Role
<b>The Olga Gray Adjudicator's Award</b>	Outstanding Contribution
<b>The John Bryan Award</b>	For Audience Appreciation
<b>The Michael J. Lees Award</b>	For Drama (Donated to mark Golden Jubilee Festival Year)
<b>The Richard Harris Memorial Trophy</b>	For Ensemble Acting (Donated by Group Theatre, London)
<b>The Jackie Banner Award</b>	For Comedy
<b>The Rene Savage Award</b>	For Costume and Make - up
<b>The Raven Players Award</b>	Best Producer / Director
<b>The Frances Isaac Award</b>	Best Performance over the age of 60

We are grateful to the Olga Cowell Bequest Fund which provides the mementos presented to each participating team.

## THE PRESIDENT



*Jean Webb. President MADF*

**A** VERY WARM WELCOME TO OUR 53RD EASTER FESTIVAL. How the year has flown since last Easter! We had a busy July hosting 'The Gathering', the British Finals of One Act Plays. We had a wonderful time with our guests, made many new friends and had packed audiences each night.

In August we were pleased to help St George's Church Organ Appeal with a dramatised history in full costume with the special appearance of our Chairman as an early Bishop of the Island!

We welcome our real new Bishop Graham Knowles to our Island. We understand he is a very keen follower of Amateur Theatre; both of his parents were actors and he too has done some acting in his time. Perhaps one of our local groups can persuade him to 'tread the boards' again!

Local Societies have been hard at work too presenting plays at the Gaiety, the Erin Arts Centre and the new Studio Theatre at Ballakermeen School in Douglas, so drama is alive and thriving in the Island. Long may it remain so but only with your loyalty and dedication to theatre going will any festival thrive.

A big thank you to our teams for making their journeys over the water, which each year becomes more and more expensive; without full houses and help from the Isle of Man Arts Council we cannot continue to offer financial aid to the teams.

We are grateful for your support, so have a wonderful week whether you are in the audience or on the stage in our lovely theatre.

Thank You.

---

*A breakdown of how the points are awarded for each production can be found on page 28 of this programme along with a Results Sheet for you to record the winners of each of the Awards and a list of all the previous winners on page 29.*

## THE CHAIRMAN



*Michael J. Lees. Chairman MADF*

**G**OOD EVENING AND A VERY WARM WELCOME TO THE Manx Amateur Drama Federation's 53rd Festival of Plays.

Part of the prize of winning the Isle of Man Festival is that the winner is then eligible for consideration in the National Drama Federation Association British All Winners Final.

Our Festival winners last year were In Yer Space, a team of past and current students at the Arnold School near Blackpool. This ground breaking entry (the first 'one hander' ever accepted in our Festival or the All Winners) went on to be runner up in the All Winners and gave us the honour of having the winner and the runner up in consecutive years.

I am a Council member of NDFFA which has given me an insight into the workings of many festivals throughout the British Isles. I am very proud to report that the Isle of Man Festival is so often referred to as not only the 'Friendly Festival' but the blue print for how festivals should be run.

We cannot, however, afford to sit on our laurels and are continually striving to improve our Festival and you the audience are a very important part of our Festival. For the first time the Friends of the Easter Festival invited our adjudicator Colin Dolley to attend the pre-view supper and give an insight into the seven plays that have been selected for our Easter Week. The Friends continue to flourish and I am grateful both to you who support them and the Friends organisers.

I am delighted to be welcoming back our adjudicator Colin Dolley for his second Easter Festival. He has accepted our now traditional invitation to be our guest speaker at the Friends Luncheon on Easter Monday.

The officials and committee of MADF organise many events during the year besides the Easter Festival including The Young Actor of Mann, The One Act Play Festival and drama courses and I am deeply indebted to their work and loyalty to me.

I wish you all a Happy Easter and a relaxing time if you are visiting our Island, whether for the first time or as an 'old hand'.

# INTRODUCTION TO THE ADJUDICATOR



Colin Dolley. GODA

COLIN HAS RECENTLY COMPLETED HIS TERM OF Office as Vice Chairman of the Guild of Drama Adjudicators. He trained at the Central School of Speech and Drama in the art of Theatre Criticism and was Head of English and Drama in a large Surrey secondary school. For many years he was theatre critic for a West London newspaper and has served on the Barclay's Award Panel assessing professional productions nationwide. He is also a member of the Scottish Association of Speech and Drama Adjudicators.

An extremely busy adjudicator, his numerous engagements have ranged throughout the British Isles. He has adjudicated the National Finals in England, Scotland and Northern Ireland and later this year will complete the 'set' when he will judge the Welsh Finals at Swansea.

Colin has also adjudicated the National All Winners Festival for NDFA.

For the past six years Colin has edited 'Asides', the Guild of Drama Adjudicator's magazine, for all Drama Festivals.

He is on the training team for a National Telephone Help Line and - on a lighter note - he uses his assessment skills as a 'Mystery Visitor' for restaurants and bars.

In addition to running drama workshops, Colin is also a freelance director, having recently produced 'My Night with Reg' for a Surrey company.

Colin is delighted to be paying his second visit to adjudicate the Easter Festival of Plays at the Gaiety Theatre.

# THE MANX AMATEUR DRAMA FEDERATION

(Affiliated to NDFA)

## Patrons:

His Excellency The Lieutenant Governor  
Air Marshal Ian Macfadyen C.B. O.B.E.

F.R.Ae.S.

and Mrs Macfadyen

## President

Mrs. Jean Webb.

## Chairman

Mr. Michael J. Lees

## Vice Chairman

Mrs. Jan Percival.

## Hon. Treasurer

Mrs. Aalin Cunningham.

## Hon. Secretary

Mr. Mark Clift

## Easter Festival Co-ordinator

Mrs Jan Percival.

## Committee

Representatives from

The Albany Theatre Group

Arbory Players

Dramatis Personae

Friends of the Easter Festival

Friends of the Gaiety Theatre

The Gilbert & Sullivan Society

The Legion Players

The Manx Operatic Society

The Rushen Players

The Service Players.

## Life Members

Mr. J. Bowring

Mrs. O. Gray

Mrs. J. Hall

Mr. M.J. Lees

Mrs. R. Savage

Mrs. J. Webb

Mr. S. Whittam

Mr. J. Wright.

## **EIGHT FINALISTS IN ISLE OF MAN BANK YOUNG ACTOR OF MANN AWARD**

ONE OF THE MOST EAGERLY AWAITED DECISIONS ON adjudication night is the name of the Young Actor of Mann - an award which has been sponsored by Isle of Man Bank for over 20 years.

The eight finalists will know their fate when the winner is announced at the Gaiety on Friday 16th April. Two of the eight - Charles Horton and Jason Creane - have reached the final round for the past two years and are joined this year by Amelia O'Shea, Olivia O'Shea, Harry Wilkinson, John Walker, Sammy Ward and Sarah Hendy.

They are bidding to follow in the footsteps of Olivia Black who won in 2003. This year Olivia has donated a Trophy which is to be awarded to the Winner of the Competition each year. Our thanks go to Olivia for her generosity.

The search for the Young Actor of Mann began during the Manx Amateur Drama Federation's Festival of One Act Plays in March, when they received an unprecedented 26 entries! Adjudicator Robert Meadows watched the competitors perform two pieces of their own choice and he too was very complimentary about the high overall standard.

The final takes place in St Andrew's Church on Wednesday 14th April at 2.30pm. This time the stipulation is for one piece of their own choice and one set piece chosen by the Federation. These are to be acted out before adjudicator Colin Dolley.

The Manx Amateur Drama Federation felt there was a need to recognise the efforts and dedication of the Drama Tutors, whether private or from an educational establishment, to this end a new award is to be presented this year; The Cyril Spencer Trophy. Many of you will remember Cyril as being a staunch supporter of MADF and especially 'Youth Theatre'. He has adjudicated our Easter Festival on three occasions. His untimely death was a great loss to drama.

When the winner of the Young Actor of Mann Award has been selected he or she will receive the award on Friday from the Isle of Man Bank's newly appointed Premium Banking Manager Victoria Artus, the prize being a place on a week long drama course at a Summer School - all expenses paid.

The Federation is grateful to Isle of Man Bank for its long time commitment, not only to the award itself but its support of the arts in general - performing and otherwise. Over the years it has been a friend to many young people through its aid for developing talent in all areas of Island life. We welcome Victoria Artus to the final night audience and hope she enjoys the occasion.

## **ACKNOWLEDGEMENTS**

AS WE ARE ALL AWARE, SPONSORSHIP and advertising to gain funds for theatrical events becomes increasingly difficult each year.

In an age where 'instant fix' entertainment is the norm and generally fewer people of all age groups are becoming less involved in theatre in other parts of the British Isles, it is refreshing and encouraging to see so much support and enthusiasm for all aspects of theatre in the Isle of Man.

The Manx Amateur Drama Federation is extremely grateful to all those Companies and Individuals who have contributed to the continuing success of our Easter Festival of Plays, not only in monetary terms, but also in the giving of their time and commitment.

Our Festival is held in high regard across the British Isles. This high regard can only be attained by hard work and support, to which end, we sincerely thank all of our Sponsors, Supporters, Advertisers and of course you, the audience for making this celebration of theatre possible in the Isle of Man. Please support our Advertisers and Sponsors. Thank you.

*Aalin; Albany Theatre Group;  
B & B Furnishings; Bank of Ireland;  
Bradford & Bingley; Bob & Trish Brown;  
James Caine Ltd; Mark Clift;  
Conister Trust; John Corrin Antiques;  
Hon. & Mrs JW Corrin OBE; GH Corlett;  
Cowley Groves; Dramatis Personae;  
Empress Hotel; Erin Arts Centre;  
Friends of the Easter Festival;  
Friends of the Gaiety Theatre;  
Margaret Gregg; Horwath Clark Whitehill;  
IFG Holdings; Isle of Man Arts Council;  
Isle of Man Bank; Legion Players;  
Lloyds TSB Bank; Mannin Media;  
Manx Telecom; Mees Pierson Intertrust;  
Number 34 Therapy Collective;  
Paradise and Gell; Service Players;  
Shoprite; Theatrix; Tower Insurance;  
Jean Webb.*



# Friends of the Easter Festival

In association with the Manx Amateur Drama Federation

Proudly Presents

## 2004 FESTIVAL LUNCH

Guest Speaker

**Colin Dolley GODA**

(Adjudicator for this years Easter Festival of Plays)

“One Hundred and One  
Things You Always Wanted to  
ask an Adjudicator....”

to be held at the

**EMPRESS HOTEL**

**Central Promenade**

**Easter Monday 12th April**

**at 12noon for 12.30 pm**

To Book Please Contact Vivienne Kennaugh

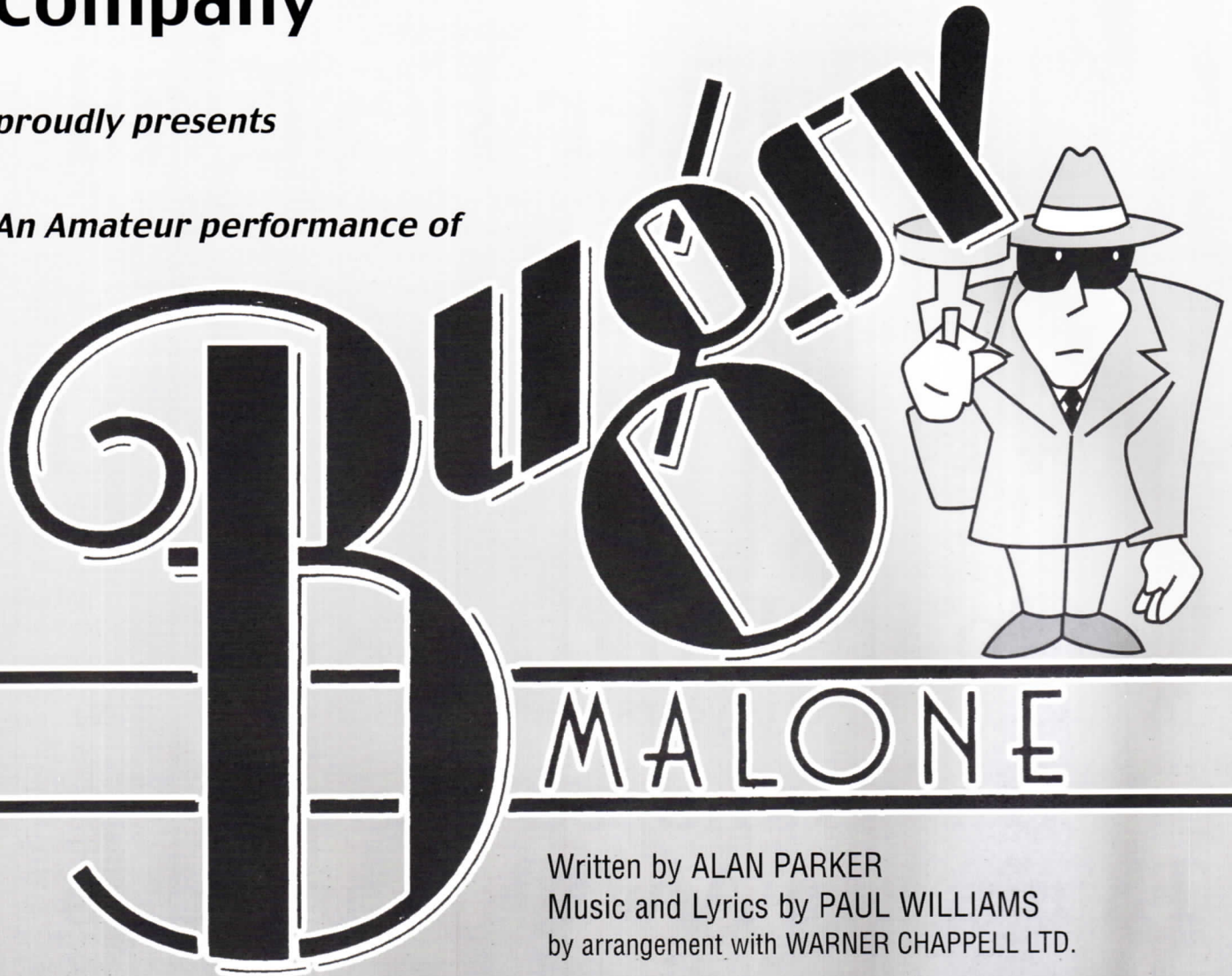
Tel: 677611 or 457070

**£13.50 including Buffet Lunch**

# Theatrix Theatre Company

*proudly presents*

*An Amateur performance of*



Written by ALAN PARKER  
Music and Lyrics by PAUL WILLIAMS  
by arrangement with WARNER CHAPPELL LTD.

**Tuesday 18th and  
Wednesday 19th May 2004**  
at 7.30 pm

at the  
**GAIETY THEATRE**  
**DOUGLAS, ISLE OF MAN**

**BOX OFFICE 694555**



# The Service Players

Best of Luck to everyone involved in the  
Easter Festival of Plays

Our forthcoming productions include

## 'Billy Liar'

by

Keith Waterhouse and Willis Hall  
at the

## Gaiety Theatre

13th 14th & 15th May 2004  
Tel: 694555 for Bookings

## 'The Crucible'

by

Arthur Miller

(Autumn Production)

Dates and Venue  
To be Announced

# The Legion Players

would like to offer their support to the participants in the  
MADF Easter Festival of Plays  
and wish you all an enjoyable week!

Our Forthcoming Productions are:

## 'REBECCA'

by

Daphne du Maurier  
at the  
Gaiety Theatre  
on

Thursday, Friday and Saturday  
17th 18th and 19th  
June 2004

## 'THE REAL THING'

by

Tom Stoppard  
at the

Ballakermeen  
Studio Theatre

on

Thursday, Friday and Saturday  
16th 17th and 18th  
September 2004

## 'GUARDS, GUARDS!'

by

Stephen Briggs

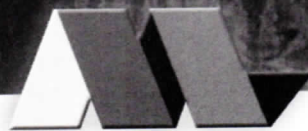
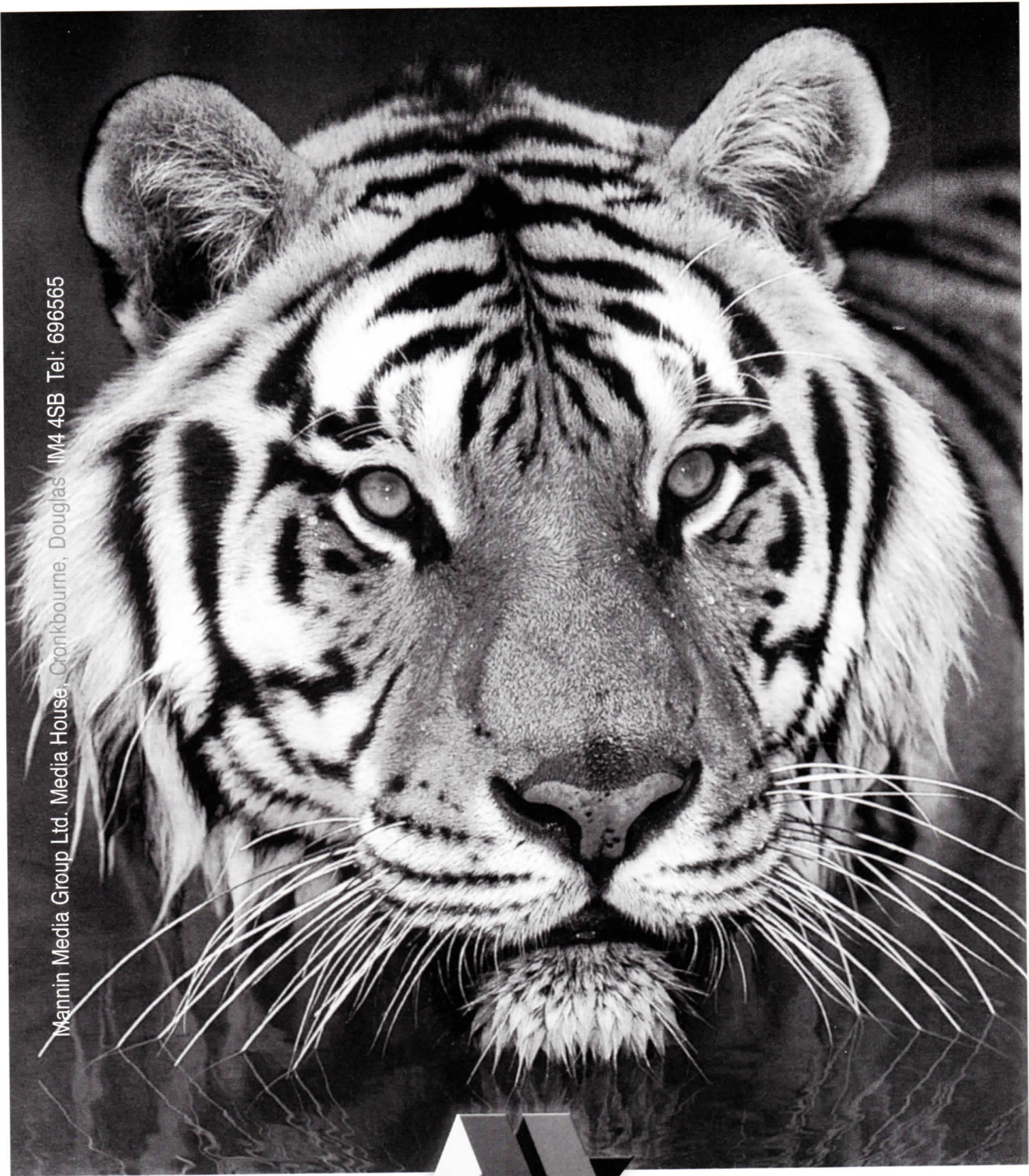
based on the novel by Terry Pratchett

at the  
Gaiety Theatre

on

Thursday, Friday and Saturday  
25th 26th and 27th  
November 2004

Mannin Media Group Ltd. Media House, Cronkbourne, Douglas IM4 4SB Tel: 696565



MANNIN PRINTING

**when it comes to printing...**

*we're the cat's whiskers!*

**IN YER SPACE**  
presents  
**'The Woman Who Cooked Her Husband'**  
by  
**Debbie Isitt**

Kenneth, an ageing teddy boy, was married to Hilary for nineteen years but for the past three years he has been married to Laura. Hilary, who never stopped loving Kenneth and is still jealous and angry, has invited the couple to dinner. It is their wedding anniversary and Hilary's menu is carefully planned. Kenneth, the man in the middle, desperately plays off one woman against the other, torn between the practical Hilary who feeds him well and the glamorous, helpless Laura and her physical charms.

Through a series of flashbacks we are taken through the stresses and strains that have led to this situation.

The play is set in the North of England at the present time.

There will be an Interval of 20 minutes between Act 1 and Act 2

**CAST & CREW**

<b>Hilary</b>	<b>Rachael McCormick</b>
<b>Kenneth</b>	<b>Grant Armstrong</b>
<b>Laura</b>	<b>Jenna-Louise Coleman</b>

<b>Director</b>	<b>Colin Snell</b>
<b>Sound and Lighting</b>	<b>James Mathews</b>

IN YER SPACE, who won the Easter Festival of Plays last year with Marie Jones' *'A Night in November'*, is making its fourth appearance at this Festival, following on from its previous performances of *'A View from the Bridge'* and *'The Birthday Party'*.

*'A Night in November'* was subsequently selected for the 2003 National Student Drama Festival and the 2003 NDEFA All Winners Final, where it was runner up. The production also had a highly successful 'pub tour' in July on the Isle of Man, having had tremendous success at the 2002 Buxton and Edinburgh Fringe Festivals.

Many of the company members who have been seen on the Isle of Man in previous productions have either completed drama school training or are currently at drama schools and In Yer Space continues to be something of a training ground leading on to drama schools and careers in film, television, theatre and radio.

Look out for details of this year's 'pub tour' of Mark Rowe's *'Howie the Rookie'* which features Ben Hynes and Matthew Dunster.

# Explore New Territory



7th Floor - Victory House  
Prospect Hill  
Douglas  
Isle of Man IM1 1EQ  
Telephone: 01624 627335  
Facsimile: 01624 677225  
E - Mail: mail@horwath.co.im  
www.horwathcw.com

## With Reassuring Guidance

Your business is doing well but you need a little extra help. At Horwath Clark Whitehill, we specialise in services for family and owner-managed businesses and the people who run them. As the credible alternative to the Big 4, let us show you how we can point you in the right direction. Contact Roger Barrs on 627335 or email us at mail@horwath.co.im



**Horwath  
Clark  
Whitehill**

*Chartered Accountants*



## Free Mobile Phone?

Sign up or renew your mobile phone contract at the Manx Telecom phone shop and you'll receive this Nokia 3410 absolutely free\*

\*Terms and conditions apply.  
This is a special offer and is subject to availability.

[www.manxpronto.net](http://www.manxpronto.net)



# MARTELLO PRODUCTIONS

presents

## 'Knuckle'

by

David Hare

Curly, an arms dealer, returns home from abroad determined to discover the secret behind the disappearance of his sister Sarah from the deserted beach between Pevensey and Eastbourne. Also involved is 'The Shadow of the Moon' club in Guildford. Curly's investigations lead him to uncover corruption and rottenness beneath the placid surface of Guildford where his father, a 'city man', lives in circumstances of some intimacy with his housekeeper.

There will be an Interval of 20 minutes between Act 1 and Act 2

### CAST & CREW

Curly Delafield	Conan Tormey
Jenny Wilbur	Sandra Mullen
Grace Dunning	Brona Wright
Patrick Delafield	Jon Tallon
Max Dupree	Andrew Scales
Barman	Paul Conlon
Storeman	John Weafer
Policeman	Noel Goff
Porter	John Weafer
Director	Trevor Bailey
Stage Manager	Lorraine O'Connor
ASM's	Aoife Kavanagh, Justin Tallon and Liz Kearns
Lighting	Pat McCann
Sound	Gareth Bailey

MARTELLO PRODUCTIONS WERE FOUNDED IN 1974. In the early days they entered festivals around the country, but recently they only enter the Easter Festival. Their Director, Trevor Bailey, won the 'Best Supporting Actor' Award for his portrayal of 'The Bird' in John B. Keane's 'The Field' at this Festival in 2002. They have been coming to the Island since 1985 and it is always good to see them again.

Martello run two productions each year and have a membership of approximately 30.



Peel Castle, Isle of Man

# Bradford & Bingley International is pleased to support the Easter Festival of Plays for 2004

## Bradford & Bingley<sup>^</sup> International

30 Ridgeway Street, Douglas, Isle of Man, IM1 1TA

Telephone: [01624] 695000

Fax: [01624] 695001

Rateline: [01624] 695002

email: [enquiries@bbi.co.im](mailto:enquiries@bbi.co.im)

[www.bbi.co.im](http://www.bbi.co.im)

Bradford & Bingley International Limited. Registered in the Isle of Man No. 052221C. With share capital and reserves in excess of £207 million. Licensed by the Isle of Man Financial Supervision Commission to conduct Banking and Investment Business. Bradford & Bingley plc undertakes to discharge the liabilities of Bradford & Bingley International Limited in so far as the latter is unable to discharge them and remains a subsidiary of Bradford & Bingley plc. Under Isle of Man legislation, eligible deposits made with an Isle of Man office of Bradford & Bingley International Limited are covered by the Depositors Compensation Scheme contained in the Banking Business (Compensation of Depositors) Regulations 1991 (as amended). All interest rates are currently paid without the deduction of tax at source. Your tax position will depend on your personal circumstances and you may wish to seek guidance from your tax adviser. It is the responsibility of the depositor to declare any interest received to their relevant tax authority.

# WAKEFIELD LITTLE THEATRE

presents

## 'Hobson's Choice'

by

Harold Brighouse

Salford town in the 1880's and Henry Hobson, a boot shop proprietor, has three daughters, good intentions and a fondness for the 'Moonrakers Inn'. Maggie, his eldest daughter, has a head for business, a will of her own and won't take any nonsense - especially from her father! When Maggie engineers an unusual relationship with Willie Mossop, a lowly bootmaker, the sparks begin to fly.

There will be an Interval of 20 minutes between Act 1 and Act 2

### CAST & CREW

Alice Hobson	Sarah Millns
Maggie Hobson	Marie Dalton
Vickey Hobson	Emma Wise
Albert Prosser	Mark Smith
Henry Hobson	Paul Haley
Mrs Hepworth	Mon Haley
Tubby Wadlow	Keith Priest
Willie Mossop	Adam Bambrough
Jim Heeler	Gilbert Robinson
Ada Figgins	Maxine Mahon
Fred Beenstock	James Wise
Dr. MacFarlane	Rozi Afferson

Director	Keith Priest
Stage Manager	Gail Rogers
Set Design	Chris Evans
Lighting	Mark Smith
Properties	Sheila Priest
Prompt	Carey Chambers
Crew	Dave Lawford, Darrell Green, Sara Aleagha & Andrew Parkin

WAKEFIELD LITTLE THEATRE was formed in 1948 and currently has just over fifty members and a flourishing youth section. The Company, on average, presents six plays a year mainly at Wakefield Theatre Royal; a Matcham Theatre like the Gaiety. In the Summer of 2003 they presented an abridged version of the three parts of William Shakespeare's 'Henry IV' at Sandal Castle, the location of the Battle of Wakefield that is featured in the play. They run their own Full Length Play Festival in June and are very much looking forward to hosting a team from the Isle of Man one year - any takers???

Bradford and Bingley are happy and proud to sponsor this page for Wakefield Little Theatre

M  
O  
N  
D  
A  
Y

12

A  
P  
R  
I  
L

# Supporting

excellence in the arts

Performing is all about teamwork and a commitment to excellence. That's how we run our business at Isle of Man Bank and why we believe in the importance of the arts in island life. We support arts events on the island, to encourage participation and make the arts accessible to all.

**ISLE OF MAN BANK** 

Isle of Man Bank Limited. Registered Company Number: 1 Isle of Man. Registered Office: 2 Athol Street, Douglas, Isle of Man, IM99 1AN. Licensed by the Isle of Man Financial Supervision Commission for banking and investment business.



**PHOENIX THEATRE GROUP**  
presents  
**'Entertaining Mr Sloane'**  
by  
**Joe Orton**

**T  
U  
E  
S  
D  
A  
Y**

**13**

**A  
P  
R  
I  
L**

Kath invites the charming Mr Sloane to lodge in her house, which is built on a rubbish dump. But it soon becomes apparent that it isn't just Kath who is vying for Sloane's affections but her brother Ed as well! This ménage à trois has an added twist with Kath and Ed's Dad, Kemp, holding the key to Sloane's mysterious past.

Joe Orton shocked the theatrical establishment with this, his first full length play, originally produced in 1964. A master of comedy structure and dialogue, Orton's plays are a mixture of 'kitchen sink drama' and poetic language. Orton was described as the first Rock 'n' Roll playwright and his influences ranged from classical literature through to sensational tabloid headlines. A truly theatrical original who earned his title of the 'Welfare State's Oscar Wilde'

There will be an Interval of 20 minutes between Act 1 and Act 2

**CAST & CREW**

<b>Kath</b>	<b>Kerri Osborne</b>
<b>Sloane</b>	<b>Daniel George</b>
<b>Kemp</b>	<b>Steve Sprosson</b>
<b>Ed</b>	<b>Adam Margilewski</b>

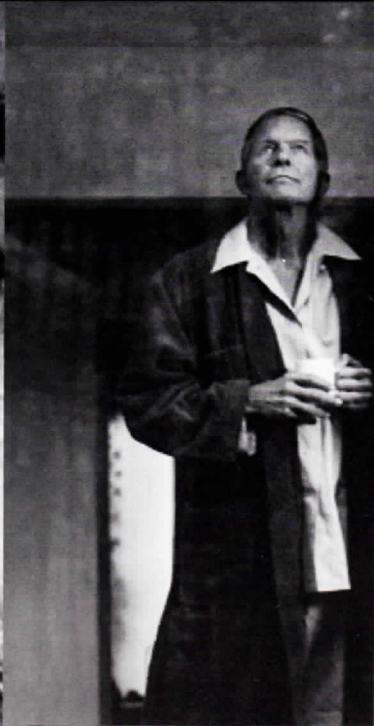
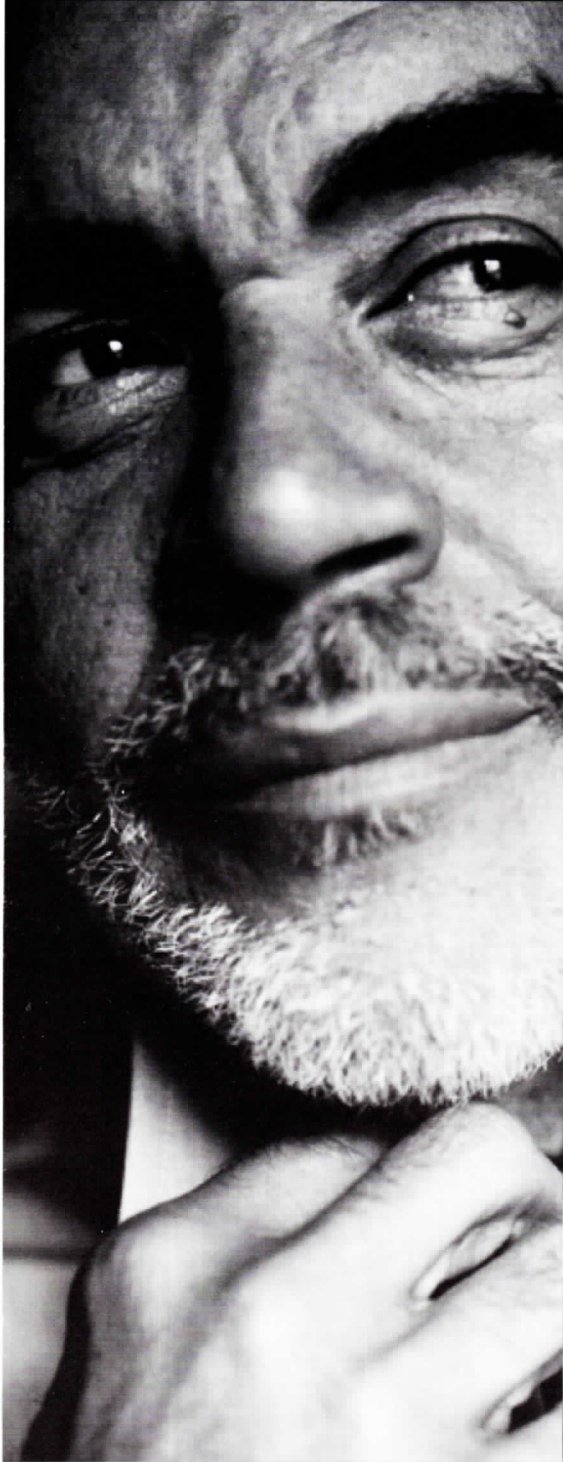
<b>Director</b>	<b>Matthew Clift</b>
<b>Stage Manager</b>	<b>Emily Hardy</b>
<b>ASM, Lighting &amp; Sound</b>	<b>Rob Brandon</b>

PHOENIX THEATRE COMPANY is based at New College in Swindon, Wiltshire. The Further Education College offers a BTEC National Diploma in the Performing Arts, as well as 'A' Levels in Drama, Dance and Music.

The Company is made up of current and ex pupils and produces several shows a year, from Shakespeare through to Pantomime.

**Mark Clift is happy and proud to sponsor this page for Phoenix Theatre Group**

# Mees Pierson Intertrust



**The World's  
Number One  
Provider Of  
Corporate  
And Trust  
Services**

**[www.meespiersonintertrust.com](http://www.meespiersonintertrust.com)**

**Tel: +44 (0) 1624 683229**

**Fax: +44 (0) 1624 612624**

**For further information please contact  
[lesa.mclaren@meespiersonintertrust.com](mailto:lesa.mclaren@meespiersonintertrust.com)**

W  
E  
D  
N  
E  
S  
D  
A  
Y  
  
14  
  
A  
P  
R  
I  
L

**TUDOR PLAYERS, MANCHESTER**  
presents  
**'The Prisoner of Second Avenue'**  
by  
**Neil Simon**

Mel and Edna's 14th floor apartment in Upper East Side, New York in the 1970's and it has not been the best of years for Mel. His psychiatrist dies with \$23,000 of his money and no therapy...then they were burgled...*then* he lost his job... *then* he had a nervous breakdown. So who are you going to turn to in your hour of greatest need? Your family, right? Have you met Mel's family? Some would say you're better off with the nervous breakdown!!  
Laugh until you cry, cry until you laugh.

Act1: Midsummer Act 2: The Fall through to Winter  
There will be an Interval of 20 minutes between Act 1 and Act 2

**CAST & CREW**

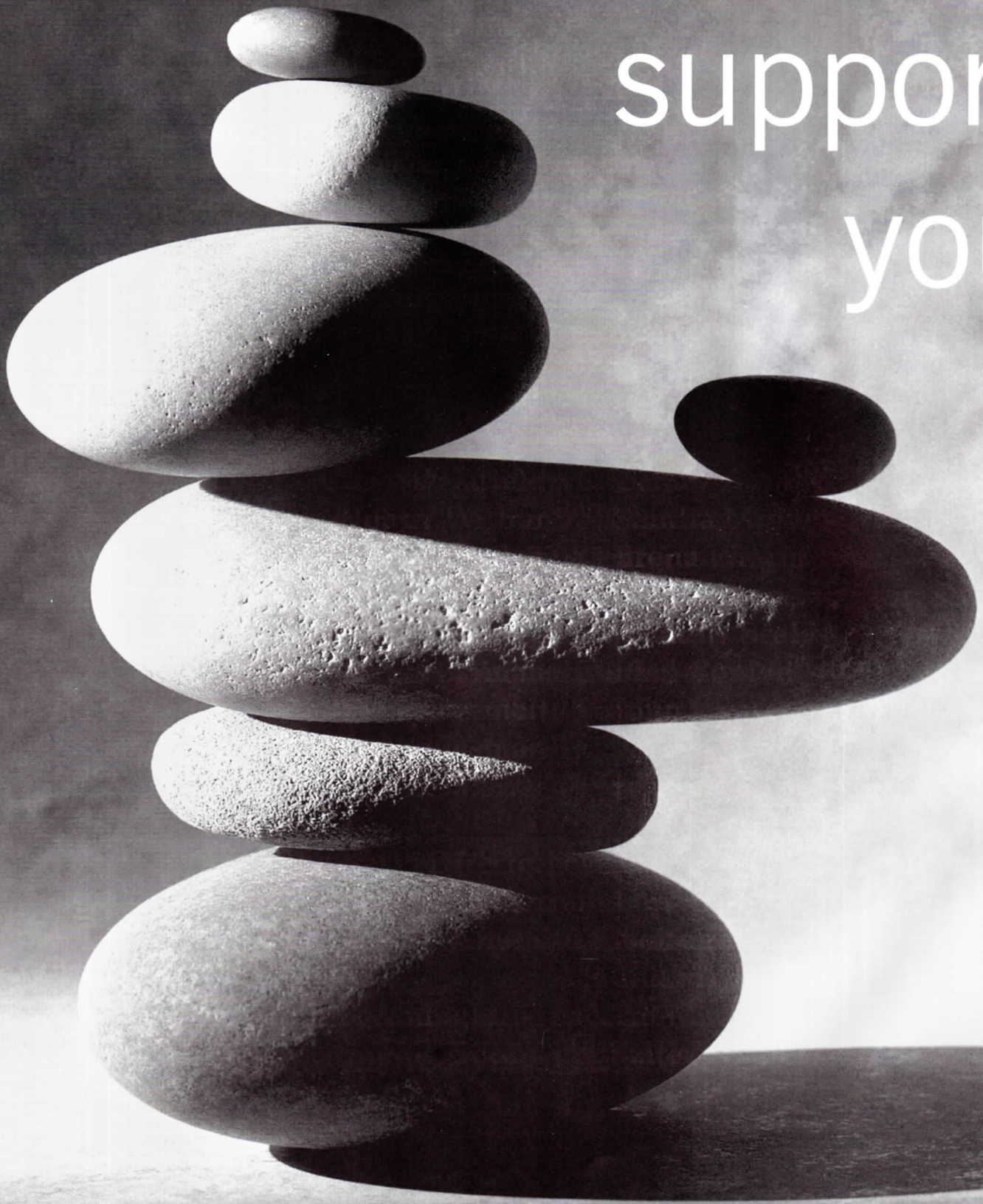
Mel Edison	Terry Hollinshead
Edna Edison	Shirley Southern
Harry Edison	John Powell
Pearl	Meg Cooper
Jessie	Leila Pilkington
Pauline	Helen Gresty
<b>Director &amp; Producer</b>	Jeff Brailsford
<b>Stage Manager</b>	Jeff Brailsford
<b>ASM's</b>	Peter Cooper, Nikki Brailsford and Chris Snape
<b>Sound</b>	Peter Lawless
<b>Properties</b>	Anne Hollinshead and Stella Blackburn

WHATEVER ELSE, TUDOR PLAYERS, MANCHESTER, can legitimately make one claim; they've been coming to our Festival longer than any other team.

They first entered the Easter Festival in 1956, which means they are in their sixth decade of playing in our beautiful theatre which Ron Arscott and the rest of them from early days, consider their spiritual home. They have been lucky enough, some years, to do well and have won the FM Cubbon Trophy more than any other Group, but that is not their main *raison d'etre* of entering; their main goal is to test themselves against the best, to meet friends old and new and to do the very best plays they can find to the very best of their ability.

They usually perform twice a year in Sale, Gtr Manchester; their last production was 'Kindertransport'. They are a small company, with a core membership of 12, which, they claim, is both their weakness and their strength, but they thrive on hard work and the challenge of performing.

Here to  
support  
you



[www.lloydstsb-offshore.com](http://www.lloydstsb-offshore.com)



Lloyds TSB

Lloyds TSB Offshore Limited: PO Box 160, 25 New Street, St Helier, Jersey JE4 8RG. Registered in Jersey, number 4029. Licensed by the Jersey Financial Services Commission to conduct banking and investment business. Written details and copies of the latest report and accounts are available upon request. The Isle of Man branch of Lloyds TSB Offshore Limited is licensed by the Financial Supervision Commission to conduct banking and investment business. PO Box 8, Victory House, Prospect Hill, Douglas IM99 1AH.

# EVERYMAN PRODUCTIONS

presents

## 'Theresé Raquin'

by

Emile Zola. Adapted by Leslie Sands

'Theresé Raquin' is a tale where passion and lust ultimately lead to tragedy and destruction. This gripping tale of retribution provides a penetrating study of sexual obsession and guilt. It tells the tale of the secret affair between Theresé and her husband's best friend, Laurent. Theresé's husband, Camille, is also her cousin. The affair sets in motion a chain of events that inexorably leads to murder, hatred and a nightmarish conclusion. The action of the play takes place in the living room of an apartment over a haberdasher's shop in the Pont Neuf district of Paris in the late 1860's.

There will be an Interval of 20 minutes between Act 1 and Act 2

### CAST & CREW

Theresé	Aisling McNulty
Laurent	Ronan Brennan
Madame Raquin	Denise Burns
Camille	Kevin Boyle
Grivet	John Caheny
Michaud	Columb McBride
Director & Producer	Manus Shields
Stage Manager	Anne McElhone
ASM, Set Design & Art	Dessie Hughes
Lighting Design	Barry McKinney
Properties	John Sheehy & Anne McElhone
Set Construction	John Scott
Construction Assistants	Dessie Hughes, Philip Scott and Vincent Holland
Costume	Angela McKinney and Meg Leahy
Sound	John Sheehy

FORMED IN 1981, EVERYMAN PRODUCTIONS has consistently provided quality theatre for the Sligo region in the west of Ireland. The Company's aims are to work to a professional discipline, to present plays which are challenging to actors and audiences and to provide workshop facilities for developing the talents of young actors. Over the years Everyman has presented critically acclaimed works by such writers as J.M. Synge, Brian Friel, Arthur Miller, Thornton Wilder and Tennessee Williams to name but a few. Two of the Company's proudest achievements were the winning of the F.M Cubbon Trophy for Best Play at the 2002 Easter Festival and going on to win the NDFA All Winners in the same year with Marina Carr's 'The Mai'.

Aalin is happy and proud to sponsor this page for Everyman Productions

T  
H  
U  
R  
S  
D  
A  
Y

15

A  
P  
R  
I  
L



## THE EMPRESS HOTEL

WE CAN CATER FOR ALL  
YOUR FUNCTIONS ~ WEDDINGS ~  
DINNER DANCES ~ CONFERENCES

High Quality Cuisine at  
Lá Brasserie Restaurant

Central Promenade,  
Douglas, Isle of Man.  
IM2 4RA

e-mail: [empresshotel@manx.net](mailto:empresshotel@manx.net)  
Website: [www.theempresshotel.net](http://www.theempresshotel.net)

THE EMPRESS HOTEL  
MADF HEADQUARTERS  
FESTIVAL GREEN ROOM  
10TH TO 17TH APRIL

THURSDAY, 16TH APRIL  
CALOR GAS CEILIDH BAND  
TRADITIONAL CELTIC MUSIC

SOUP & ROLL OR HOT MEAL  
AVAILABLE EVERY NIGHT  
NO BOOKING REQUIRED

A MINIBUS WILL RUN BETWEEN THE  
GAIETY THEATRE AND THE EMPRESS HOTEL  
FOR 30 MINS FROM THE END OF THE  
ADJUDICATION EACH EVENING

# Number Thirty Four Therapy Collective **34**

Full Body Massage, Indian Head Massage, Aromatherapy Massage,  
Food Intolerances (BEST Test), Hopi Ear Candles, Manual Lymph Drainage (MLD),  
Reflexology, Baby Massage Instruction, LaStone Therapy, Reiki, CranioSacral Therapy.

We are open until 9pm Monday to Saturday.

10am to 4pm on Sundays.

All Treatments are by Appointment ONLY.

To book an appointment or for further information regarding on-site  
visits tailored to suit your Company's requirements telephone 678832

34 Victoria Street, Douglas

**10% off your first treatment on production of this advert!!**

**Visit our Website on [www.number34.co.im](http://www.number34.co.im)**

**SEDGEFIELD PLAYERS**  
presents  
**'A Kiss on the Bottom'**  
by  
**Frank Vickery**

A heartfelt bittersweet comedy in the unlikely setting of a hospital cancer ward. The women who are spending their time there for treatment find their own ways of coping with life, the uncertainties of their health and the secrets and half-truths maintained by family and nursing staff. Somehow the atmosphere remains cheery and lives become inextricably linked and altered as patients and staff support, annoy and care for each other by turns.

There will be an Interval of 20 minutes between Act 1 and Act 2

**CAST and CREW**

<p><b>Marlene</b> <b>Lucy</b> <b>Grace</b> <b>Bev</b> <b>June</b> <b>Nurse</b> <b>Domestic / Sister</b></p>	<p><b>Norma Neal</b> <b>Viv Jacobs</b> <b>Jean Hewling</b> <b>Sarah Atkinson</b> <b>Rosemary Jones</b> <b>Annette Lawson</b> <b>Dorothy Tate</b></p>
<p><b>Director</b> <b>Stage Manager</b> <b>ASMS</b></p>	<p><b>Walter Howell</b> <b>Richie Parrie</b> <b>Garry Jacobs</b> <b>Terry West</b></p>
<p><b>Lighting</b> <b>Sound</b> <b>Prompt</b></p>	<p><b>Michelle Cooper</b> <b>Sherri Parry</b> <b>Annette Lawson</b></p>

FOUNDED IN 1970, THE SEDGEFIELD PLAYERS produce a wide range of plays, offering a variety of challenges to its Members. The Players present full length plays in March, June and November, a traditional pantomime at Christmas and a 'SPYS' Showcase displaying the talents of our younger Members. Sedgfield Players Youth Section members take part in youth productions as well as in plays involving collaboration with senior Members and have an impressive record of success in LAMDA exams. The Sedgfield Festival of One Act Plays, held annually in September since 1976, has an excellent reputation locally and nationally, bringing together a wealth of talent in a festive atmosphere to rival that of the Isle of Man!

**Jean Webb is happy and proud to sponsor this page for Sedgfield Players**

**F  
R  
I  
D  
A  
Y  
  
16  
  
A  
P  
R  
I  
L**

# G. H. Corlett

ESTABLISHED 1835

**High Class Jeweller and Watchmaker  
Trophy Specialist and Engraving Service**

**Suppliers of:**

**CITIZEN Accurist ROYAL LONDON & TIMEX Watches**

**Telephone: (01624) 676762 Fax: (01624) 661779  
email: ghcorlett@enterprise.net www.ghcorlett-iom.com  
4 & 6 Castle Street, Douglas, Isle of Man. IM1 2EU**

**MEMBER OF THE NATIONAL ASSOCIATION OF GOLDSMITHS**



## **30th mananan international festival of music and the arts Erin Arts Centre, Port Erin**

**Isle of Man Bank Auditorium 24 June - 4 July 2004**

arts council



<b>Thursday 24 June, 8pm</b> Event 1 £12 <i>Noël Coward - Cafe de Paris</i> Colin Baldy & Gulliver Ralston	<b>Sunday 27 June, 8pm</b> Event 5 £15 <i>Chamber Music</i> The Lindsays	<b>Wednesday 30 June, 8pm</b> Event 8 £12 <i>Recital</i> David Campbell (clarinet) Guy Johnston (cello) Rebecca Woolcock (piano)	<b>Saturday 3 July, 3pm</b> Event 11 £2 <i>Competition</i> Young FilmMaker of Mann 2004
<b>Friday 25 June, 8pm</b> Event 2 £12 <i>Swing Something Simple</i> Dave Shepherd Jazz Quintet	<b>Monday 28 June, 8pm</b> Event 6 £10 <i>Spoken Word</i> An Audience with Andrew Motion	<b>Thursday 1 July, 8pm</b> Event 9 £10 <i>Never Say Dai</i> Arwel Treharne Morgan (piano & tenor)	<b>Saturday 3 July, 8pm</b> Event 12 £10 <i>The Music of Nelson &amp; his Navy</i> Richard Baker
<b>Saturday 26 June, 8pm</b> Event 3 £12 <i>'Things we found under the sofa'</i> Adey Grummet (soprano) Graham Coatman (piano)	<b>Tuesday 29 June, 8pm</b> Event 7 £8 <i>Illustrated Lecture</i> <i>The gardens of La Mortella</i> Alessandro Mattera	<b>Friday 2 July, 8pm</b> Event 10 £12 <i>Happiest Days</i> Janine Roebuck (mezzo) Arwel Treharne Morgan (piano) Richard Baker (narrator/piano)	<b>Sunday 4 July, 3pm</b> Event 13 £10 <i>Piano Recital</i> Mickaël Connoir
<b>Sunday 27 June, 3pm</b> Event 4 £5 <i>Film with live piano accompt</i> <i>'The Italian Straw Hat' (1927)</i> Graham Coatman (piano)			<b>Sunday 4 July, 8pm</b> Event 14 £15 <i>Songs of Love and Betrayal - Brahms</i> Robert Lloyd (bass) Julius Drake (piano)

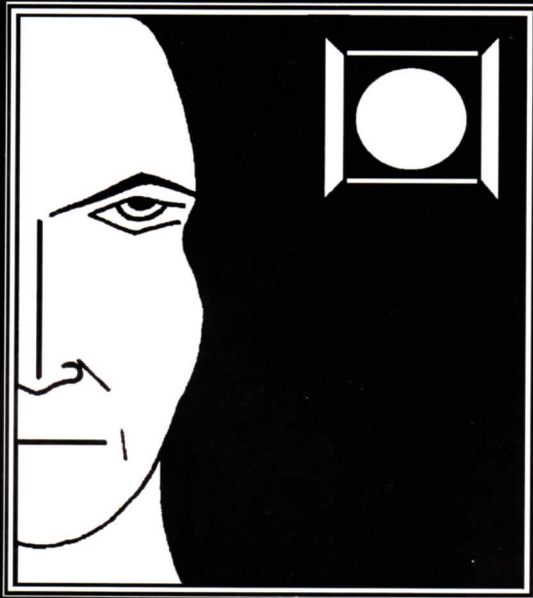
Postal booking now open: Mananan Festival Bookings, Erin Arts Centre, Victoria Square, Port Erin, IM9 6LD or in person at the Box Office, Erin Arts Centre from June 17th (1.30 - 4.30 p.m.) Tel (01624) 832662.

Please enclose a Stamped Addressed Envelope with your ticket order and a crossed cheque made payable to MANANAN FESTIVAL. If a SAE is not included, your tickets will be held at the Box Office and can be collected from JUNE 17.

[www.erinartscentre.com](http://www.erinartscentre.com)



*dramatis*



**PERSONAE**

**Wish all the  
Competitors in  
the Easter  
Festival of Plays  
2004 the Very  
Best of Luck  
and Hope you  
all have an  
Enjoyable and  
Exciting week**



**ALBANY  
THEATRE  
GROUP**

**WISH GOOD LUCK TO ALL  
THE TEAMS TAKING PART  
IN THE  
EASTER FESTIVAL OF PLAYS**

**If you would like more details about Albany Theatre Group as a Performer,  
Back Stage Member or just interested in what we do please call  
Jan or Mike Percival on 625379**

## Isle of Man ARTS COUNCIL

**T**HE ISLE OF MAN ARTS COUNCIL EXISTS TO serve the people of the Isle of Man by developing and improving the knowledge, understanding, participation and access to the highest standard of the arts in all forms. The Council offers: Underwriting to local arts groups, small or large, established or struggling, experimental or traditional; brings to the Island musicians and performers of the highest calibre; plays an educational role by organising workshops; supports major festivals such as the MADF Easter Festival of Plays, MADF One Act Play Festival, Mananan International Festival of Music and the Arts, Yn Chruinnaght, the Jazz Festival and Blues Festival.

**For more information contact the  
Isle of Man Arts Council  
10 Villa Marina Arcade, Douglas.  
Tel: 611316.  
[www.iomartscouncil.dtl.gov.im](http://www.iomartscouncil.dtl.gov.im)**

## Friends of the GAIETY THEATRE

**Volunteers from the Friends staff this theatre at every performance throughout the year. The Friends always welcome any new members who may wish to support us in the restoration and the preservation of our beautiful Frank Matcham theatre.**

**If you would like to help us in any way, or you would like more information about us, please contact:**

**Irene Shimmin  
(Membership Secretary)  
74, Ballabrooie Way  
Douglas IM1 4HB  
Telephone: 673803**

## Friends of the Easter Festival

This is a body under the auspices of the Manx Amateur Drama Federation. Their aims are to help and support the Festival, encourage audiences to attend the week of plays and to raise the profile and interest from new sponsors.

Information about the Festival and related events are sent to members by Newsletter.

If you would like to become a member, please provide details below.

Membership is open to everyone on or off the Island.

Name.....

Address.....

.....Postcode.....

Telephone.....

Membership: £2.00 per annum. £25 Life Membership.

Please return this form to:

Vivienne Kennaugh 11 Close Kennish, Ballavagher, Douglas, Isle of Man. IM2 2HL.

Please make any cheques payable to Manx Amateur Drama Federation.

## FOR THE THEATRE

Box Office Manager.....	June Kirby
Box Office Administrators.....	Neill Cowin, Les Burrow, J Harrison, M Crebbin and F Bone.
Housekeeper.....	Derek Hibbert
Production Manager.....	Seamus Shea
Stage Manager.....	Graham Bayliss
Theatre Technician.....	Alex Davidson
Assistant Technician.....	Carl Crellin
Heritage Manager.....	Mervyn Russell Stokes

With thanks to the Friends of the Gaiety for volunteer staff.

## NOTICE TO PATRONS EMERGENCY EVACUATION PROCEDURE

If you are asked to evacuate the building, please do so as quietly as possible and leave by the nearest exit to which you are directed by the Staff.

In the event of an emergency which by necessity requires that this Theatre be evacuated:

You as a member of the audience are requested to co-operate by paying strict attention to any instructions, either by announcement from the stage, or given verbally by a member of Staff at this Theatre.

**DO NOT PUSH OR RUSH**

**DO NOT** turn back or stop to collect any personal belongings.

**DO NOT** re-enter the building for any reason unless told to do so.

**DO NOT** act in a manner that could cause obstruction to emergency services attending the building to deal with the emergency.

**N.B.**

- a) All gangways, passages and aisles shall be kept entirely free from chairs or any other obstruction.
- b) Persons shall not be permitted to stand in any gangway or aisle.
- c) The safety curtain shall at all times be maintained in working order and shall be lowered and raised during the time of the performance.

# FOR YOUR OWN SAFETY PLEASE OBSERVE THESE INSTRUCTIONS

# RESULTS

This page is for you to record the winners.

**Breakdown of Marking: Acting 40 points; Production 35 points;  
Stage Presentation 15 points; Originality, Effort & Attainment 10 points**

Best Play - The F.M. Cubbon Trophy .....

First Runner Up - The Dick Craine Cup .....

Second Runner Up - The Jack Lynch Cup .....

The Vanda Lambert Award .....  
Best Female Performance. (Replica Trophy Donated by Jean Webb)

The June Edge Cup .....  
Most Promising Performance under 21

The Edward S. Benn Award .....  
Best Male Performance. (Replica Trophy Donated by Mark Clift)

The Mollie Corkill Award .....  
Best Female Performance in a Supporting Role

The David Kennaugh Award .....  
Best Male Performance in a Supporting Role

The Olga Gray Adjudicator's Award .....  
Outstanding Contribution

The John Bryan Award .....  
For Audience Appreciation

The Michael J. Lees Award .....  
For Drama (Donated to mark the Golden Jubilee Festival Year)

The Richard Harris Memorial Trophy .....  
For Ensemble Acting (Donated by Group Theatre Company, London)

The Jackie Banner Award .....  
For Comedy

The Rene Savage Award .....  
For Costume and Make - up

The Raven Players Award .....  
Best Producer / Director

The Frances Isaac Award .....  
Best Performance over the age of 60

## PREVIOUS FESTIVAL WINNERS

1950	The Thirteen Players, Bristol -	'Canaries Sometimes Sing'
1951	Phoenix Theatre Group, Dublin -	'Michaelmas Eve'
1952	Phoenix Theatre Group, Dublin -	'Lovers Meeting'
1953	Withington Players, Manchester -	'The Tudor Wench'
1954	The Thirteen Players, Bristol -	'Candlelight'
1955	The Thirteen Players, Bristol -	'Frolic in April'
1956	Withington Players, Manchester -	'The Gentle Arm'
1957	Theatre One, Edinburgh -	'Dark of the Moon'
1958	Theatre One, Edinburgh -	'Don't Listen Ladies'
1959	Theatre Arts Club, Edinburgh -	'All My Sons'
1960	Theatre Arts Club, Edinburgh -	'Diary of Anne Frank'
1961	Cairde Fail, Dublin -	'Twilight of a Warrior'
1962	Rushen ADS, Isle of Man -	'Ladies in Retirement'
1963	Tudor Players, Manchester -	'Love and Lunacy'
1964	Withington Players, Manchester -	'Billy Liar'
1965	Fylde Coast Players, St Annes -	'The Rehearsal'
1966	No Competition	
1967	Fylde Coast Players, St Annes -	'Fallen Angels'
1968	Tudor Players, Manchester -	'Castle of Deception'
1969	Litherland Dramatic Group -	'Oedipus Rex'
1970	Green Room Players, Blackpool -	'Spring and Port Wine'
1971	Legion Players, Isle of Man -	'Angels in Love'
1972	Tudor Players, Manchester -	'Relatively Speaking'
1973	Blackpool College Theatre Group -	'Home'
1974	Formby Theatre Group -	'Ghosts'
1975	Tudor Players, Manchester -	'Plaza Suite'
1976	No Competition	
1977	Tudor Players, Manchester -	'The Price'
1978	Dilys Guite Players, Sheffield -	'Blythe Spirit'
1979	Theatre One, Thornton -	'Home'
1980	The Players, Cheadle Hulme -	'Table Manners'
1981	Abbey Actors, Belfast -	'Echoes'
1982	Group Theatre Company, London -	'Rashomon'
1983	Theatre One, North Fylde -	'Exit the King'
1984	Parkside Players -	'Da'
1985	Tudor Players, Manchester -	'Bedroom Farce'
1986	Tudor Players, Manchester -	'Accrington Pals'
1987	Clarence Players, Belfast -	'The Goodbye People'
1988	Martello Productions, Wicklow -	'Children of a Lesser God'
1989	Group Theatre Company, London -	'Hard Times'
1990	Martello Productions, Wicklow -	'Agnes of God'
1991	Sedgefield Players, Co. Durham -	'Stepping Out'
1992	Sedgefield Players, Co. Durham -	'Woman in Mind'
1993	Group Theatre Company, London -	'September in the Rain'
1994	St. James' Players, Burnley -	'Last Tango in Whitby'
1995	Sedgefield Players, Co. Durham -	'Dancing at Lughnasa'
1996	Tryst Theatre, Falkirk -	'Under Milk Wood'
1997	Brigstow Theatre Company -	'Driving Miss Daisy'
1998	Tudor Players, Manchester -	'Hindle Wakes'
1999	Tryst Theatre, Falkirk -	'Cemetery Club'
2000	Tudor Players, Manchester -	'The Curious Savage'
2001	Bovindon Players, Bovington -	'Abigail's Party'
2002	Everyman Productions, Sligo -	'The Mai'
2003	In Yer Space, Blackpool -	'A Night in November'

# MANX NATIONAL ANTHEM

(Arrane Ashoonagh Dy Vannin)

Words written by W.H. Gill

O Land of our birth,  
O gem of God's earth,  
O Island so strong and so fair;  
Built firm as Barrool,  
Thy throne of Home Rule  
Makes us free as thy sweet mountain air.

When Orry, the Dane,  
In Mannin did reign,  
'Twas aid he had come from above;  
For wisdom from heav'n  
To him and been giv'n  
To rue us with justice and love.

Our fathers have told  
How Saints came of old,  
Proclaiming the Gospel of Peace;  
That sinful desires,  
Like false Baal fires,  
Must die ere our troubles can cease.

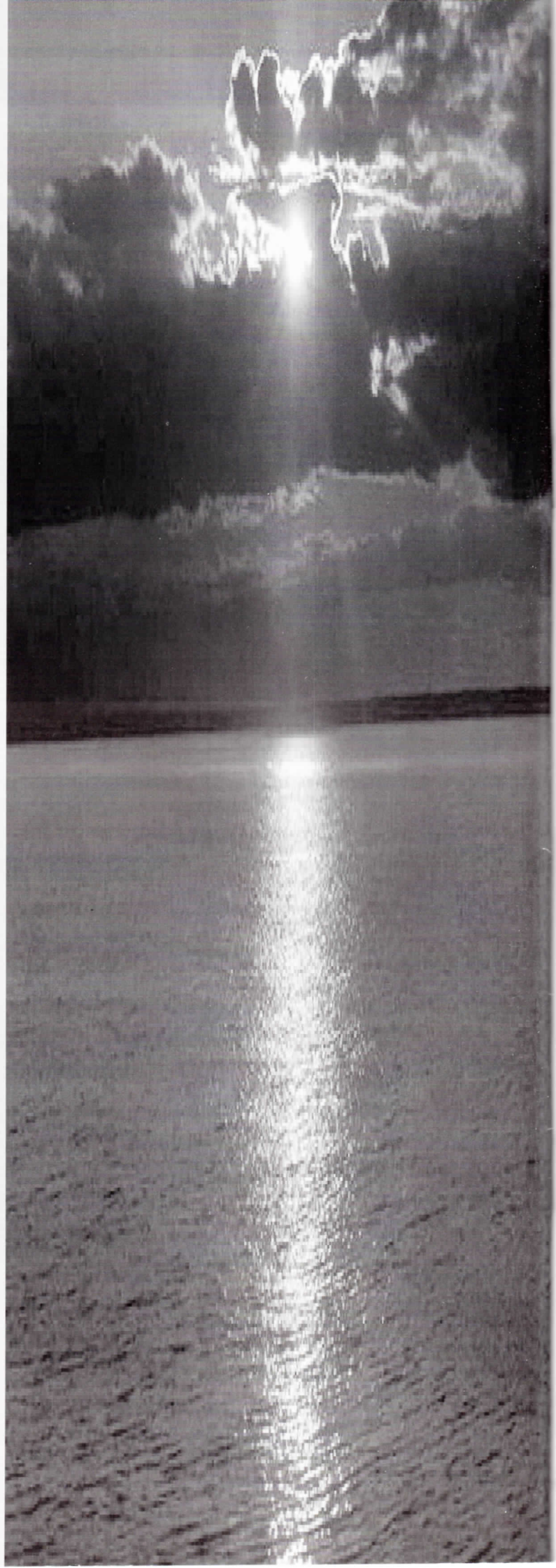
Ye sons of the soil,  
In hardship and toil,  
That plough both the land and the sea,  
Take heart while you can,  
And think of the Man  
Who toiled by the Lake Galilee.

When fierce tempest smote  
That frail little boat  
They ceased at His gentle command;  
Despite all our fear,  
The Saviour is near  
To safeguard our dear Fatherland.

Let storm-winds rejoice,  
And lift up their voice,  
No danger our homes can befall;  
Our green hills and rocks  
Encircle our flocks,  
And keep out the sea like a wall.

Our Island, thus blest,  
No foe can molest;  
Our grain and our fish shall increase;  
From battle and sword  
Protect our nation with peace.  
And crowneth our nation with peace.

Then let us rejoice  
With heart, soul and voice,  
And in the Lord's promise confide;  
That each single hour  
We trust in his power  
No evil our souls can betide.



# The real star of the show...

**skovby**  
Excellent Dining Rooms



EXCLUSIVE TO

**Paradise & Gell**

*The home of top brand furniture  
at rock bottom prices!*

24/30 MICHAEL STREET PEEL ISLE OF MAN TELEPHONE 842818

A  
HARD  
ACT TO  
FOLLOW



Established 1935

**Conister Trust PLC**...your local bank

Tel: 694694 • Fax: 612764 Email: [manxbusiness@conistertrust.com](mailto:manxbusiness@conistertrust.com)

Conister Trust PLC • Conister House • 16/18 Finch Road • Douglas • Isle of Man • IM1 2PT  
Licensed by the Isle of Man Financial Supervision Commission for Banking Business.