

easter 2010

EASTER 2011



MADF's
DIAMOND
JUBILEE YEAR



23rd - 29th April

Be part of the Festival on
The Jewel of the Irish Sea

Feailley~Caisht ny Cloieghyn

Easter Festival of Full Length Plays 2010

Saturday, 3rd April	'Burn This' by Lanford Wilson. (This play contains strong language) Bejou Productions, Essex.
Sunday, 4th April	'Like a Virgin' by Gordon Steel. (This play contains strong language) In Yer Space, Blackpool.
Monday, 5th April	'Dealers Choice' by Patrick Marber. (This play contains strong language) Whole Hog Productions, Wiltshire.
Tuesday, 6th April	'Twelfth Night' or 'What You Will' by William Shakespeare. (Abridged by the Director & Company). Garden Suburb Theatre, London.
Wednesday, 7th April	'Blackbird' by David Harrower. (This play is not suitable for under 16's) Romiley Little Theatre, Manchester.
Thursday, 8th April	'Neville's Island' by Tim Firth. Wakefield Little Theatre, Wakefield.
Friday, 9th April	'Unravelling the Ribbon' by Mary Kelly and Maureen White. Belvoir Players, Northern Ireland.

Ny Aundyryn The Awards

Final Adjudication and presentation of the Awards will take place after the play on Friday, 9th April.

The Awards will be presented by Sam Alder, Chairman, IOM Arts Council

The F.M. Cubbon Trophy ~ Best Play
The Dick Craine Cup ~ First Runner Up
The Jack Lynch Cup ~ Second Runner Up

The Vanda Lambert Award

Best Female Performance (Memento Donated by Jean Webb)

The S.E Benn Award

Best Male Performance (Memento Donated by Mark Clift)

The June Edge Cup

Most Promising Performance under 21

The Mollie Corkill Award

Best Female Performance in a Supporting Role

The David Kennaugh Award

Best Male Performance in a Supporting Role

The Olga Gray Adjudicator's Award

Outstanding Contribution

The John Bryan Award

For Audience Appreciation

We are grateful to the Olga Cowell Bequest Fund which provides the mementos presented to each participating team.

The Michael J. Lees Award

For Drama (Donated to mark Golden Jubilee Festival Year)

The Richard Harris Memorial Trophy

For Ensemble Acting (Donated by Group Theatre, London)

The Jackie Banner Award

For Comedy

The J & B Green Award

For Costume and Make - up

The Raven Players Award

Best Producer / Director

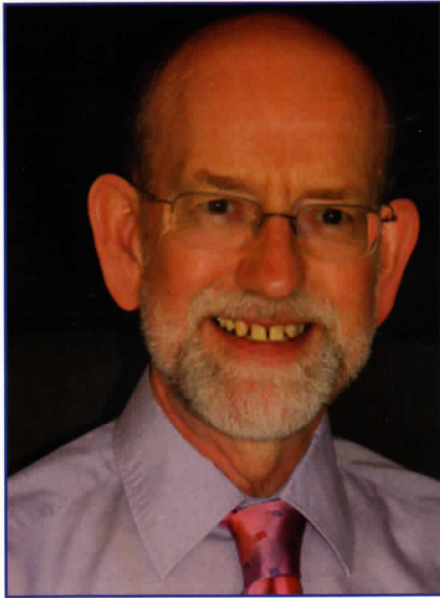
The Frances Isaac Award

Best Performance over the age of 60

Framed Certificates Kindly Donated by Meg Cooper

Season Ticket Holders: Please collect your Voting Slip for the Audience Appreciation Award from the 2nd Box Office on Thursday, 8th April

Y Eaghtyrane Ain Our President



John Bowring. MADF President.

We welcome back as our adjudicator, Tony Rushforth, GoDA, who is no stranger to the Isle of Man, having adjudicated here several times before. We hope he will enjoy once again our historic Gaiety Theatre, talented actors and an appreciative audience.

Last year we were enduring the worst rigours of the credit crunch and this clearly had an effect on the number of entries we received. This year the situation has improved just a little and we are able to present a full programme of seven plays. We are most grateful to our visiting teams for making the journey to present such a varied and challenging programme.

Once again, we thank you, the audience for your support. Without you such festivals would cease to exist and would indeed have little purpose. Please recommend this Festival to your friends - we have a large theatre to fill! We hope you will also support the Festival Club, the Festival Lunch and, not least, the Final of the Young Actor of Mann, for which five local and very talented young people have been selected to compete from over twenty entries.

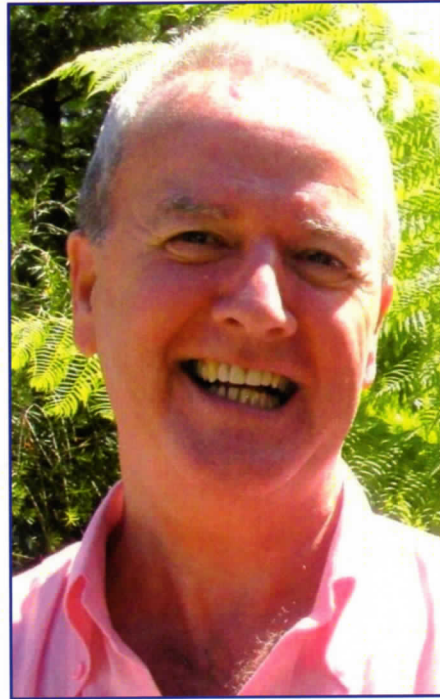
Finally I shall end on a personal note. At the next AGM, I shall be stepping down as your President after four enjoyable years. After considering our future options, Sue and I have applied to join our daughter and her husband in Sydney, Australia! By this time next year, if all goes to plan, we should be sampling the cultural and other delights of Oz!

I wish you all a very enjoyable week and look forward to meeting many of you at the theatre or elsewhere during the Festival.

Good evening, ladies and gentlemen, and a very warm welcome to the 2010 Easter Festival of Plays.

After the coldest winter for thirty-one years, I am sure we are looking forward to a milder Easter and escaping in the evenings into a nice warm theatre!

Y Caairliagh Ain Our Chairman



*Michael J. Lees. MADF Chairman;
NDFA Chairman;
Isle of Man Arts Council Member; NODA Director.*

very sensitive decisions regarding entries

Undoubtedly, if some of our plays were not in our Easter Festival, there would be no other opportunity to see these plays on the Island.

In my work as Chairman of the National Drama Festivals Association (NDFA), I realise at first hand the difficulties some festivals are experiencing throughout the British Isles with entries and diminishing audiences. Please keep up the good work in the Isle of Man in supporting live theatre.

As an Arts Council member I continue to try and bring drama workshops and professional theatre to the Island.

During 2009 I was invited to become a Director of the National Operatic and Dramatic Association (NODA) which gives me an insight into the musical organisations as well as trying to improve the drama involvement within NODA.

I wish to place on record my sincere thanks to the Isle of Man Arts Council; without their underwriting this festival would be unable to continue.

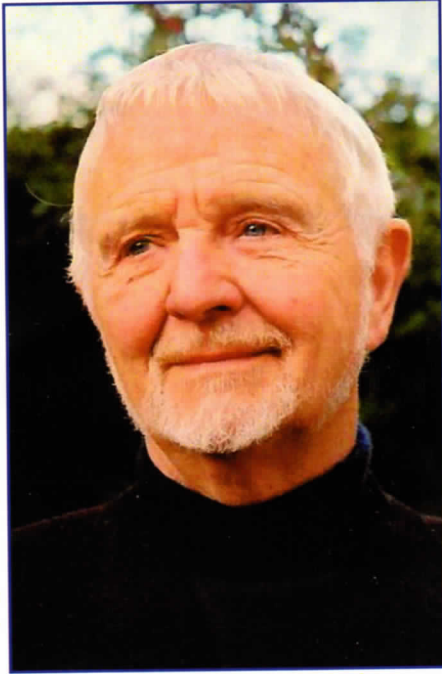
Many congratulations to Bejou Productions who won our Easter Festival last year and went on to win the British All Winners Festival at Woking.

I wish a very warm welcome return to our adjudicator Tony Rushforth and hope for an exciting and informative week of theatre.

It gives me much pleasure to welcome you all to our 59th Festival of Plays.

In these difficult financial times it is very encouraging to receive seven entries some of which are award winning plays. With modern work there is often very strong language and whilst we don't want to act as a censor we would ask our teams and audience to support MADF in making some

Y Briw Ain Our Adjudicator



Tony Rushforth. GoDA

Tony Rushforth studied at the Central School of Speech and Drama in London and acted with the Harrogate Repertory Company and also directed productions at the Bradford Playhouse, the Ashcroft Theatre in Croydon and at the Edinburgh Festival.

For twenty years he was Head of the Drama Department at

St. Mary's University College in Strawberry Hill. He spent six months as Visiting Fellow in Performing Arts at Melbourne University and adjudicated the Sydney Theatre Festival before returning to act in the film 'The Opium Wars'.

For six years Tony was the Artistic Director of The Questors International Theatre Festival in Ealing which enabled him to travel and see the work of many European companies.

More recently he has been busy directing and also teaching Theatre Workshops in the U.K. and in Europe and for the Drama League of Ireland where his travels have taken him to Dublin, Cork, Galway and two Summer Schools at Maynooth University. Tony writes for the theatre and his plays include 'The Kerry Dance', 'Close-Up', 'Charade' and 'Seascape'. For six years he was a judge for the National Drama Festivals' New Play Award.

Tony Rushforth is a Licentiate of the Royal Academy of Music, a member of: The Writers' Guild, The Society for Theatre Research and The Guild of Drama Adjudicators and has an M.A. in Modern Drama.

He has adjudicated the Irish, Scottish, English and Welsh One Act Finals and the British All Winners. In 2004 and 2007 he adjudicated the All Ireland Finals in Athlone and Wexford and last year was at the FEATS International Festival in Brussels.

Tony is delighted to be paying a return visit to the prestigious Manx Easter Festival.

Conastey Drama *Amateyragh Vannin* The Manx Amateur Drama Federation

(Affiliated to NDFA)

Patrons

His Excellency The Lieutenant Governor
Vice Admiral Sir Paul Haddacks KCB
& Lady Haddacks

President

Mr. John Bowring

Chairman

Mr. Michael J. Lees

Vice Chair

Mrs. Jacqui Hawkes

Hon. Treasurer

Mrs. Aalin Cunningham

Hon. Secretary

Ms Linda Parr

Easter Festival Coordinator

Mrs. Aalin Cunningham

Committee Representatives from:

The Albany Theatre Group
Arbory Players
Friends of the Easter Festival
Friends of the Gaiety
The Gilbert & Sullivan Society
The Legion Players
The Manx Operatic Society
The Rushen Players
The Service Players

Life Members

Mr. J. Bowring
Mrs. A. Cunningham
Mrs. O. Gray
Mrs. Jenny Green
Mrs. J. Hall
Mr. M.J. Lees
Mrs Joyce Lockstone
Mrs. J. Percival
Mrs. R. Savage
Mrs. J. Webb
Mr. S. Whittam
Mr. J. Wright

It is with regret we announce the death of David Sugden. He was a staunch supporter of the Friends of the Festival and an avid follower of theatre. He will be sorely missed.

Cloieder Aeg Vannin

Young Actor of Mann Award 2010



The first round of the Young Actor of Mann was held on Saturday the 13th February at the Studio Theatre.

The competition is organised by the Manx Amateur Drama Federation and is sponsored by Cowley Groves and Isle of Man Events Services. MADF thank both our Sponsors for their continuing commitment to this prestigious event.

Twenty young actors aged between 13 and 18 years performed a wide range of dramatic and musical theatre pieces. They were adjudicated by Michael Poyner GoDA who was on the Island to adjudicate the Manx Amateur Drama Federation's One Act Play Festival.

Mr Poyner selected five performers to go through to the final in April. The winner will spend a week at a Summer School in the UK.

The finalists are: Leah Carter; Eleanor Drinkwater; Bethany Magee; Jared Moore and Peter Shimmin.

The final will be held at the Studio Theatre, Ballakermeen on Wednesday 7th April at 2 pm.

Anyone interested in entering the competition next year should contact Jacqui Hawkes at youngactorofmann@gmail.com

Gura mie ayd Many Thanks

Our Festival is held in high regard across the British Isles. This has been achieved by the hard work of a dedicated team of organisers, generous donations by our sponsors and the companies who have advertised in this programme.

The Manx Amateur Drama Federation is extremely grateful to all those Companies and Individuals who have contributed to the continuing success of our Easter Festival of Plays, not only in monetary terms, but also in the giving of their time and commitment. This has been a sterling effort and has made a substantial contribution to the continuing success of the Easter Festival of Plays. We thank you all.

Not least amongst our thanks go to you, our audience and to regular theatre goers for their ongoing support. Thanks too for the input from The Friends of the Easter Festival who link enthusiasts with Festival developments and arrange special pre-performance events and Membership is highly recommended. We extend a warm welcome to newcomers of the Easter Festival of Full Length Plays in the hope that this week of theatre will encourage you to make it a firm fixture in your social diary.

*Aalin
Breakthrough Breastcancer
Bob and Trish Brown
John and Sue Bowring
Cafe Relish
Celton Manx Ltd
Mark Clift
Cowley Groves
Empress Hotel
Friends of the Easter Festival
Friends of the Gaiety
Olga and Michael Gray
Jenny and Brian Green
Jacqui Hawkes
Isle of Man Arts Council
Isle of Man Event Services Ltd.
Kall-Kwik
Manx Radio
Jean Webb
Chris Wilson
John Wright*

eat - meet - greet - treat

@

Cafe Relish

Top Floor, Peter Luis Building,
9 - 11 Duke Street, Douglas

Telephone: 613724

E-mail: caferelish@hotmail.com

Quality outside catering available

The Legion Players

Wish Every Success to all involved in the
Easter Festival of Plays

PLEASE SUPPORT OUR NEXT PRODUCTION

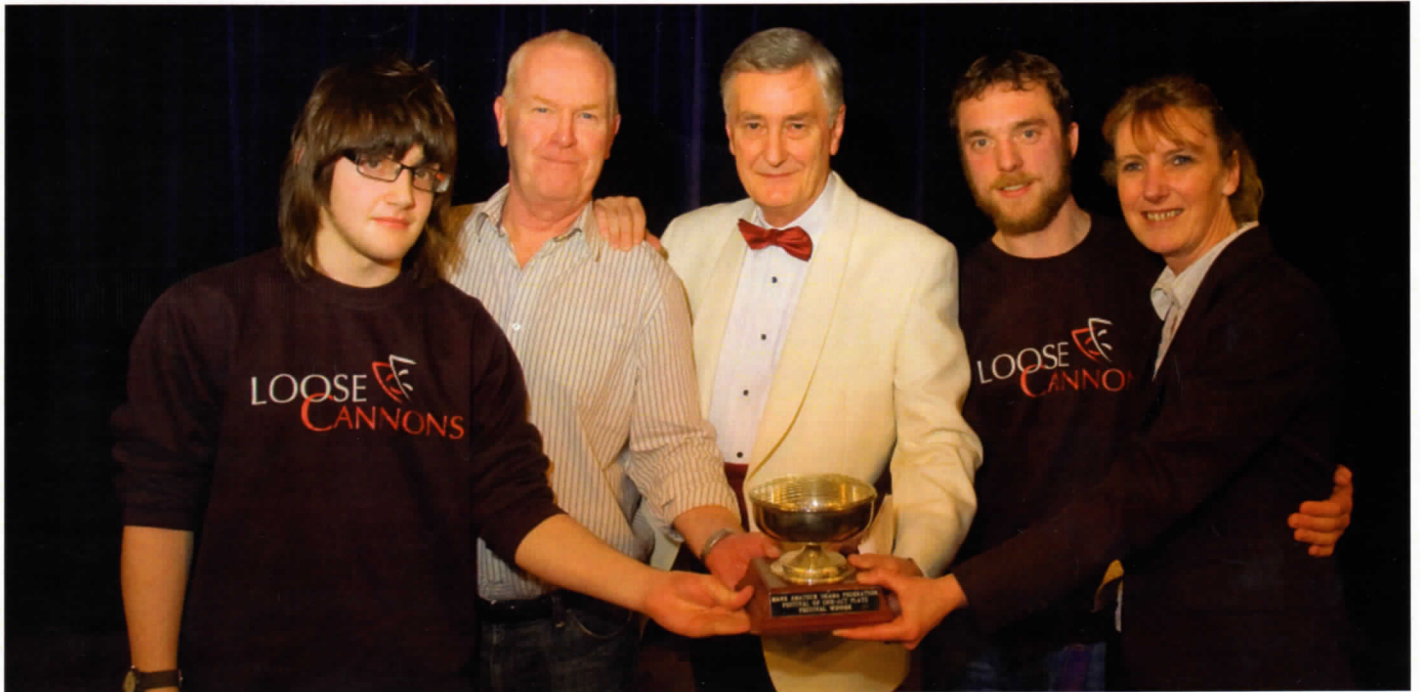
'THE DIARY OF ANNE FRANK'

by Frances Goodrich and Albert Hackett

27TH TO 29TH MAY 2010

THE GAIETY THEATRE

Feailley Cloieghyn Un Aght
 Manx Amateur Drama Federation
 2010 One Act Play Festival - The Awards



Northern Arts Rose Bowl for Best Play. Loose Cannons Anglesey - 'Mam'



The Caine Family Trophy for Best Director Allan Williams for 'Mam'. Loose Cannons, Anglesey



Mark Clift Trophy for Best Male Performance Allan Williams as Peter in 'Mam'



Jean Webb Trophy for Best Female Performance Louisa Jane Bawden as Sister Mary in 'The Private War of Corporal Cooper'. Legion Players



Rushen Players President's Trophy for Best Supporting Male Performance - Wayne Kelsall as Maria Soldo in 'The Spelling of Coynes'. Rushen Players



The John Bowring Trophy (Runner Up). 'The Private War of Corporal Cooper'. Legion Players



The Personal Choice Ltd Award for Best Supporting Female. Cath Baird as Lisa in 'Mam'. Loose Cannons



The Nadine Talbot Award for Best Dramatic Moment. Rachael Martin, Director of 'Empathy'. Service Players



Daphne Clark Memorial Trophy for Best Comedic Moment. Carole Bridson, Director of 'Sandcastles on the Beach'. Arbury Players



The John Hayes Trophy for Most Effective Set. Rachael Martin, Director of 'Empathy'. Service Players



The Sure Mobile Trophy for Best use of Lighting & Sound. 'The Private War of Corporal Cooper'. Legion Players nine - nuy



The Preident's Cup (Adjudicator's Award). Chris Caine for 'Trip of a Lifetime'. Service Players



All year round availability, two stunning apartments in Sitges, 20 minutes south of the historical and beautiful city of Barcelona. Both apartments are only five minutes from the beach and the railway station with trains to Barcelona and the Airport every

SITGES APARTMENTS

15 minutes. They each have full air conditioning, central heating, fully equipped kitchens and laundries, balconies and UK Free SatelliteTV in the living room area and the master bedroom. Each apartment has an en suite master bedroom and a second bathroom.



Apartment 1 has two double bedrooms, a twin and one bunk bed.

Apartment 2 has two double bedrooms, a twin and a double sofa bed.

The Catalan Country Farmhouse is 40 miles inland from Sitges. It has four double bedrooms, three bathrooms, two large living and dining areas, two kitchens, two large patios a jacuzzi and a pool. There is a one acre fruit garden and an organic vegetable plot. The farmhouse can be divided and used as two separate, two bed-roomed units and is fully air conditioned and centrally heated. The use of a car is essential, as the nearest village is five miles away! The village has an excellent restaurant as well as a bread shop, general stores and a grocers/butcher shop.

7 nights minimum stay. Whole farmhouse from €840 Euros or half farmhouse from €490 Euros (depending on Season).

CATALAN COUNTRY FARMHOUSE

To check availability and book online go to www.catalanfarmholidays.com. If you enter MADF25 in the guest comments box we will donate £25 from your booking to MADF.

For long term winter lets, call John on 01624 611999.

Jesarn 3rd Mee Averil Saturday 3rd April

Bejou Productions

'Burn This' by Lanford Wilson

The Cast and Crew

Anna	Joanna Masters
Burton	Richard Foster
Larry	Jeremy Battersby
Pale	David Streams

Director	John White
Assisted by	Richard Foster
Stage Manager	Tracy Foster
Technical Support	Linda Belt

The Play

Anna, a dancer/choreographer who shares an apartment with two gay roommates. Robbie (who has just been killed in a boating accident) and Larry an advertising executive. At the start of the play Anna is recovering from the funeral of Robbie comforted by Burton her wealthy boyfriend who is a successful writer. Suddenly Robbie's older brother Pale bursts onto the scene. He transforms the action of the play and the lives of those in it. Pale is both terrifying and fascinating. In the end he brings Anna to the unsettling and compelling love, that despite her fears and doubts she cannot turn away.

The Players

Bejou was formed in 2003 by a group of friends who wanted to perform good quality plays to a discerning audience. We perform one play a year, our first play was 'The Weekend' by Michael Palin. This will be our fourth year at the Gaiety Theatre. Isle of Man Festival 2007 Runners Up; British All Winners 2007 Winner; Isle of Man Festival 2008 Runners Up; Hertford Theatre Week 2008 Winner; Thurrock 2008 Winner; Thurrock 2009 Winner; Isle of Man Festival 2009 Winner; British All Winners 2009 Winner.

The Play will run for approximately 1 hour 40 minutes.
In addition, there will be an interval of 15 minutes.

Aalin is happy to sponsor this page
eleven - nane-jeig

THE THIRTY SEVENTH
BRITISH ALL-WINNERS
**DRAMA
FESTIVAL**
Emotions will be running high



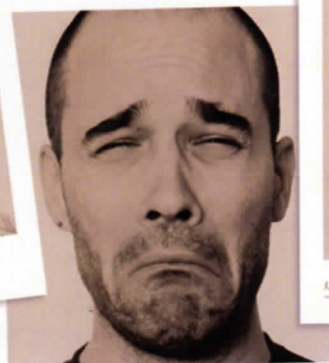
shock



amusement



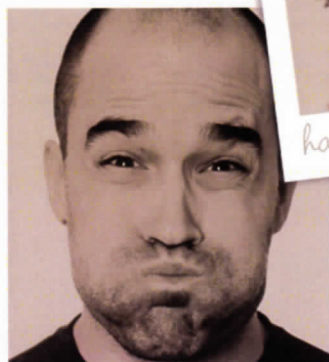
happiness



sadness



satisfaction



disbelief



anger

SUNDAY 25 TO SATURDAY 31 JULY 2010
THAMESIDE THEATRE, ORSETT ROAD, GRAYS

ADJUDICATOR
PAUL FOWLER, GODA

FOR TICKETS CALL THE THEATRE BOX OFFICE
0845 300 5264

FOR FURTHER INFORMATION CONTACT JOHN SCOWEN
01375 383257 or johnscowen@live.co.uk

Jedoonee 4th Mee Averil Sunday 4th April

In Yer Space ***'Like a Virgin' by Gordon Steel***

The Cast and Crew

Angela	Amy Cartridge
Maxine	Gwyneth Owen-Pullin
Viv	Katie Leahy
Ken	Ben Hynes
Monkey	Himself

Director	Colin Snell
Sound and Lighting	Andrew Gray
Choreography	Gwyneth Owen-Pullin

The play is set in the 1990s in Manchester in a variety of locations ranging from Angela's bedroom, front room to a club.

With special thanks to the Grand Theatre, Blackpool, the Med Greek Restaurant, Blackpool, for rehearsal facilities; Tom Killoran for sound recordings; Andrea Danby for costumes.

The Play

Peppered with Madonna's hits, *Like A Virgin* is both hilarious and tragic by turns as it explores the pubescent lives of two best friends, Angela and Maxine, as they seek to make it to the Top of the Pops. Filled with the usual teen interests, parties, clothes, boys and secret handshakes, a revelation about Angela threatens to drive a wedge between the friends and the path of their lives is soon changed forever. This raw, touching slice of northern realism examines the importance of relationships in our lives.

The Players

In Yer Space started life in 1998 with a two handed version of *Dr Faustus* at the Edinburgh Festival Fringe. The company was made up of actors from The Arnold School, Blackpool, and over the past eleven years has included former students who have gone on to Drama School, and University Drama Department. From January 1st 2010 *In Yer Space* is independent of the School (on the retirement of the Director of Drama) but still operational and based in the Preston area.

Festivals have included: Manx Festival, Wakefield Theatre Festival, Llandrindodd Wells Drama Festival, Hertford Theatre Week, Fleetwood Drama Festival, Felixstowe Drama Festival.
Awards have included : Backstage, Director, Actress, Supporting Actor, Under 21, Adjudicators Award, Runner Up.

The Play will run for approximately 1 hour 50 minutes.
In addition, there will be an interval of 15 minutes.

Chris Wilson is happy to sponsor this page
thirteen - tree-jeig



CELTON

Celton Manx are delighted to be sponsoring

'Dealer's Choice'

**We would like to wish the Cast
and Crew every success and the
Audience a wonderful evening.**

**Celton Manx Limited
E-Commerce House
32 Malew Street
Castletown
Isle of Man
IM9 1AF**

Jelune 5th Mee Averil Monday 5th April

Whole Hog Productions **'Dealer's Choice'** *by Patrick Marber*

The Cast and Crew

Mugsy	Ryan Gilks
Sweeney	Daniel O' Grady
Stephen	Phil Regan
Frankie	Marco Recchioni
Carl	Andy Mitchell
Ash	Steve Sprosson

Director/Stage Manager	Matthew Clift
Lighting Design	Steven Hoyer
Sound Design	Pete Hadden

The Play

Restaurant owner Stephen is looking forward to his weekly game of poker. But when one of the regulars drops out and is replaced by a stranger, the stakes are raised and tensions are stretched to breaking point. This emotionally charged black comedy unfolds over the course of one testosterone fuelled night; where friendships are pushed to the limit and father and son's fragile relationship comes to an inexorable conclusion.

'Dealer's Choice' was Patrick Marber's first play and had its debut at the National Theatre in 1995. The play went on to win the Evening Standard award for Best Comedy.

The Players

Whole Hog Productions was founded in 2008 to stage a new play, 'Directions', which reached the All England Theatre Festivals One Act Final (2009), picking up six trophies on the way. The Company is made up of performers who have worked together, on and off, for over eighteen years, staging a diversity of productions including works by Shakespeare, Pinter and original plays.

Whole Hog's Production of the new play 'Directions' by Chris Scott, entered the All England Theatre Festival of One Act Plays. 'Directions' won the Swindon One Act Festival as well as winning the Best Actor and Best Supporting Actor awards. They went on to win at the Mercia Division Section and Western Area semi final before picking up the adjudicators award in the English Final.

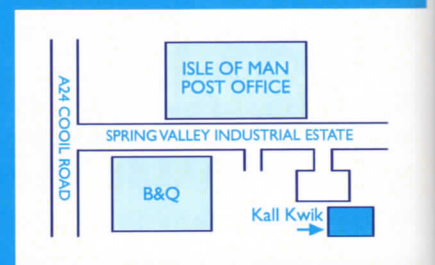
The Play will run for approximately 2 hours.
In addition, there will be an interval of 15 minutes.

Mark Clift is happy to sponsor this page
fifteen - queig-jeig

biggerr & better

Kall Kwik have moved to bigger and better premises,
for all your design and print requirements

**Unit 13, Springham Park,
Spring Valley Industrial Estate,
Douglas, IM2 2QU**



for the best prices in print...

...call 629729

mail@kallkwik.co.im www.kallkwik.co.uk/isleofman

kallkwik®

business design + print

Jemayrt 6th Mee Averil Tuesday 6th April

Garden Suburb Theatre

'Twelfth Night' or 'What You Will' by William Shakespeare

The Cast and Crew

Orsino	Stiofan Lanigan-O'Keeffe
Viola	Laura Allen
Sea Captain	Ashley Gayle
Sir Toby Belch	Mark Overall
Fabian	Tim Solomons
Maria	Ali Newell
Sir Andrew Aguecheek	Toby Moore
Olivia	Natalie Rowland
Malvolio	Edward Smith
Feste	Christian Radnedge
Sebastian	Raheem Mir
Antonio	Ashley Gayle

Other voices by members of the company

Director	Mary Musker
Stage Manager	Chris Pleass
Lighting Designer	David Lane
Sound Operator	Jon Musker
Costumes	Miranda Solomons and Sarah Overall
Set Photographs	Peter Batchelor
Other Crew	Debbie Lane, Jemima Lane, Kate Woff
Original Music composed by	Christian Radnedge
Set Designer	Andrew Farrer

The action takes place in and around the loft apartments of the rich lord Orsino and the heiress Olivia, and in other parts of Illyria.

The Play

Illyria, 2010, in their lonely loft apartments Olivia and Orsino stave off the ennui of their rich but empty existences with hours of introspection and the company of their iPods. Olivia's cousin Sir Toby Belch and his scofulous carousing companions choose drinking, computer games and bating Malvolio as their entertainment. This peaceful, if sometimes noisy, life is disrupted by the arrival on Viola and Sebastian, teenage twins with all the enthusiasm of spaniel puppies, despite being nearly drowned and then separated after their ship is wrecked on Illyria's rocky coast. Perfect holiday entertainment – songs, slapstick, romance, ridiculous cases of mistaken identity, poignant moments and Shakespeare's beautiful poetry.

The Players

The Garden Suburb Theatre, based in and around Hampstead Garden Suburb in North London, celebrated a cenenary of drama in 2008, and draws its large membership from a wide area. We put on five shows a year, including a family show, an outdoor production, and at least one show in a professional theatre space above a pub in Highgate. Recent shows have included *The Railway Children*, *Ayckbourn's Time of My Life*, *The Admirable Crichton* by J M Barrie, and *Our Country's Good* by Timberlake Wertenbaker, as well as our abridged and modern *Twelfth Night* and we will have staged *The Three Musketeers* just before the MADF Easter Festival.

GST tries to tour one play a year, ideally to a festival. For MADF we have done nine plays over a period of twelve years. Last year with *Breaking the Code* we were delighted with our success, especially by the audience award and the mentions and nominations of people in smaller roles.

In 2008 we invited all our festival friends from everywhere to take part in our centenary mini-festival. For us it's all about the fun and the stages, not the gongs.

The Play will run for approximately 2 hours.
In addition, there will be an interval of 15 minutes.

John and Sue Bowring are happy to sponsor this page
seventeen - shiaght-jeig

Brian Keenan
General Manager
Tel: (+44) 01624 661155
Fax: (+44) 01624 673554
Email: conference@
theempresshotel.net



Empress Hotel
Central Promenade
Douglas
Isle of Man
IM2 4RA

**The Empress Hotel has everything that you would expect
from a 3 Star Hotel**

Well appointed Bedrooms with WiFi

24Hour Rooms Service

**Comfortable Piano Lounge with Music Saturdays in
Winter & Monday – Saturday from April – September**

**Good Bar menu from 10.00am – 9.30pm daily
Good selection of dishes.**

**Conservatory Restaurant with wonder full views over the
Promenade & Douglas Bay serving English A La Carte
Menu**

**Aroma Self Service Buffet offering Asia & European
Dishes open from 6.00pm Tuesday – Friday Saturday
from 4.00pm & Sunday from 12.30am CLOSED MONDAYS**

**Ideal Wedding Venue with Popular Conference &
Banqueting**



Jecrean 7th Mee Averil Wednesday 7th April

Romiley Little Theatre **'Blackbird' by David Harrower**

The Cast and Crew

Una	Emma Parker
Ray	Roy Vernon

Director/Designer	Peter Wright
Stage Manager	John Hale

RLT would like to thank Amber Byers for her help with this production

The action takes place in a staff room in an unspecified work-place

The Play

David Harrower's explosive play has Ray confronting his past when Una arrives unannounced at his office. Guilt and raw emotions run high as they recollect the passionate love affair they had 15 years earlier. As tensions rise, we are left to question: when is love abuse? And can we ever break free from the shackles of the past?

The Players

Romiley Little Theatre has been in existence for over 60 years, performing in a variety of venues. In our recent history we have produced musicals as well as plays, ranging from 'Return to the Forbidden Planet' and 'Chicago' to 'A Midsummer Night's Dream' and our latest production 'Blackbird'. We have regularly performed UK and regional amateur premieres which have included Alan Ayckbourn's 'House/Garden', John Godber's 'Unleashed', 'Return to the Forbidden Planet', 'One Big Blow' and 'Blackbird'. In 2007/2008 we toured 'One Big Blow' nationally.

2007: Fleetwood Theatre Festival – 'One Big Blow'. Awards: Best Actor and production was Runner Up.
2008: Manx Easter Festival of Plays – 'One Big Blow'. Award: For Ensemble Acting.
2008: Buxton Fringe Festival – 'One Big Blow'. Award: Production was runner up and received a nomination for Best Actor.
2008: Fleetwood Theatre Festival – 'Girls' Night'. Awards: Best actress and production was Runner Up
2009: Manx Easter Festival of Plays – 'Girl's Night'. Awards: Best Female Performance. Adjudicator's Award for Outstanding Contribution, Award for Comedy and production was Runner Up.
2009: Fleetwood Theatre Festival – 'Blackbird'. Awards: Best Actress and production was Runner Up and received nominations for Best Actor and Best Director.

The Play will run for approximately 1 hour 30 minutes.
There will be no interval

Jenny and Brian Green are happy to sponsor this page
nineteen - nuy-jeig



Isle of Man

Event Services Limited

are proud to be joint sponsors of the
Young Actor of Mann Competition
and wish all the finalists the very Best of Luck

**Book now for the Easter Festival of Plays 2011
and be part of MADF's Diamond Jubilee**

Isle of Man Event Services Limited offer competitive sea and air travel prices,
combined with Guest House and Hotel Accommodation.
Self Catering holidays and car hire are also available.

**Why not visit the beautiful Isle of Man in 2010 for a short
break or longer.**

RESERVATIONS 01624 664460

email: info@iomevents.com www.iomevents.com

Isle of Man Events Services Limited
26a Duke Street, Douglas IM1 2AY

Providing Financial protection for your Isle of Man Holiday

Jerdein 8th Mee Averil Thursday 8th April

Wakefield Little Theatre **'Neville's Island' by Tim Firth**

The Cast and Crew

Neville	Paul Taylor
Gordon	Steve Fox
Angus	Paul Haley
Roy	Nick Gillott

Director	Mon Haley
Stage Manager	Rozi Afferson
Set Construction	Glyn Thomas
Lighting	Edmund Bell
Sound	Rozi Afferson
Properties	Pam Thomas and Malolm Afferson
Rehearsal Prompt	Gail Rogers
Producer	Paul Haley

The play is set in on Rampsholme Island, Derwentwater over the weekend of Friday 4th and Saturday 5th November 1994.

The Play

The Pennine Spring Water Company has sent four of its middle managers on a 'Business Outbound Team Building Weekend' in the Lake District. Two other teams of managers are also taking part in the exercise, which includes following clues to arrive at their final destination. Neville has been elected captain of the Pennine Spring Water team but it probably wasn't unanimous, as Gordon has little faith in Neville's ability as a leader, and lets everyone know it. Angus is well prepared for every eventuality though, even the totally improbable, and Roy just wants everyone to be happy.

The Players

Wakefield Little Theatre was founded in 1948. Currently we have around 60 members varying in age from 7 to 77. We perform four to six plays a year, mainly at the Theatre Royal in Wakefield. This is a 500 seater Matcham Theatre – his smallest and is known as 'the little gem' Our last two productions were 'The Ghost Train' and Girl's Night our next is 'Peter Pan'.

Wakefield 2009

Isle of Man Festival 2009 Award for Costume and Makeup; All Winners 2008 Runner-up and Adjudicators Award; Wakefield 2008 Winner, Best Director, Best Actor, Best Supporting Actor, Presentation and Audience Award; Isle of Man Festival 2008 Best Actor under 21

The Play will run for approximately 2 hours 15 minutes.
In addition, there will be an interval of 15 minutes.

Bob and Trish Brown are happy to sponsor this page
twenty one - nane as feed



manx radio
the sound of your life

89 • 97.2 • 103.7FM and 1368AM

is proud to support



**Easter Festival
of
Full Length Plays**

manxradio.com

Jeheiney 9th Mee Averil Friday 9th April

Belvoir Players

'Unravelling the Ribbon' by Mary Kelly & Maureen White

The Cast and Crew

Lyndsey	Rachel Hammonds
Lola	Gemma Rice
Rose	Pamela Mills

Director	Richard Mills
Stage Director	Barbara Girwin
Original Music by	Denis Clohessy and Carl Kennedy
Stage Manager	Michael Gorman
Lighting & Sound	Karl Smyth
Assisted by	James and Sandy McAlister
Costumes	Margaret McAlister
Properties	Richard McAlister

The play is set in Ireland in the present day

The action happens in Lyndsey's bedroom, Lola's hallway, Rose's kitchen and various locations

The play was produced in cooperation with THE ULSTER CANCER FOUNDATION

The Play

Rose is thirty-four and lives on a farm with her husband and two children. She worries she may have married too young. Lola is fifty and wants to sell her home. Nobody ever calls, and she has stopped opening her post. Lyndsey is eleven, and her best friend has stopped sitting beside her in art class. When breast cancer touches their lives, everything starts to unravel – Rose's marriage fails apart, Lola gets arrested, and Lyndsey hides a cooked ham in a thorn bush.

The Players

Established over 40 years ago Belvoir Players have been performing throughout the British Isles. Every summer we play to capacity houses throughout the Province with Summer Theatre Comedies in over six venues for some 20 performances. We have a large Theatre Academy of over 150 young people from ages 5 to 16 and perform 19 times in pantomime each Christmas.

Belvoir Players are regular contributors to the Full length and One Act Festival circuits. Formed in 1968 we now operate out of our own purpose built studio theatre on Belvoir Drive. We have an adult membership of 70+ and support a Junior Academy which boasts 170+ members ranging in age from 5 to 16 years.

Every year we tour the Province in the Summer and produce our annual pantomime which runs for some 20 performances around Christmas. Our Youth Academy present their own show each June and are in rehearsal for the Schools Version of 'Les Miserables' this year.

In 2006 we won the Ulster Final and went on to successfully compete in the British All-Winners Festival, winning also the Audience and Back Stage awards, with 'Someone Who'll Watch Over Me' by Frank McGuinness. Belvoir Players have performed in the Isle of Man Festival with 'The Memory of Water' and in the British Finals with One Act plays.

This Play will run for approximately 1 hour 55 minutes.

In addition, there will be an interval of 15 minutes.

Olga and Michael Gray are happy to sponsor this page.

twenty three - tree as feed

BREAKTHROUGH BREAST CANCER is a pioneering charity dedicated to the prevention, treatment and ultimate eradication of Breast Cancer. Breakthrough's research into the disease has already brought important discoveries and new treatments to patients. The Breakthrough Isle of Man Group have been active for 18 years, raising awareness of the disease, campaigning for the best treatments for women in the Isle of Man and raising funds for much needed research. Breast Cancer affects 1 in 9 women at some time in their lifetime. Although great strides have been made in improving outcomes in the last decade, 1,000 women a month in the UK still lose their lives to breast cancer. It is not only women who are affected, over 300 men a year are diagnosed. The Isle of Man is no different; we all know families whose lives have been greatly affected by a family member having the disease.

All funds raised in this theatre on Friday will go directly towards supporting Breakthrough's Research Centre in Manchester which opened in March this year. They also have Research Centres in London and Edinburgh. The Centre will bring together a world class team of scientists to Manchester. A generous financial gift donated by Mr Gubay of the Isle of Man has enabled Breakthrough to set up and equip the laboratories and recruit the first team, whose work will be amongst the most innovative and exciting new initiatives in years.

Breakthrough's aim is to bring the best minds together and rally the support of all those whose lives have been or may one day be affected by the disease. The result will save lives and change futures by removing the fear of breast cancer for good.

The Breakthrough Breast Cancer Isle of Man Group is immensely grateful for your support and also for Manx Radio's sponsorship. We believe passionately that this disease can be beaten. Your continued support is vital to ensure we keep on track to fulfil our vision – THANK YOU ALL.

For more information visit our website: www.breakthrough.org.uk/isleofman or contact:

Mrs Olga Gray
Coardaylis
Balloughton Close
Douglas IM1 2JE
Phone: 01624 673301
e-mail: olgagray@manx.net
Isle of Man Group (Reg. Charity no. 825)

BREAST CANCER
BREAKTHROUGH



Breakthrough Breast Cancer is a charity registered in England & Wales (No.1062636) and Scotland (No.SC039058). web site:www.breakthrough.org.co.uk

Friends of the Easter Festival

In association with the Manx Amateur Drama Federation

Proudly Presents

2010 FESTIVAL LUNCH

Guest Speaker

Tony Rushforth GODA

“Questions You Have Always
Wanted to Ask an Adjudicator”

to be held at the

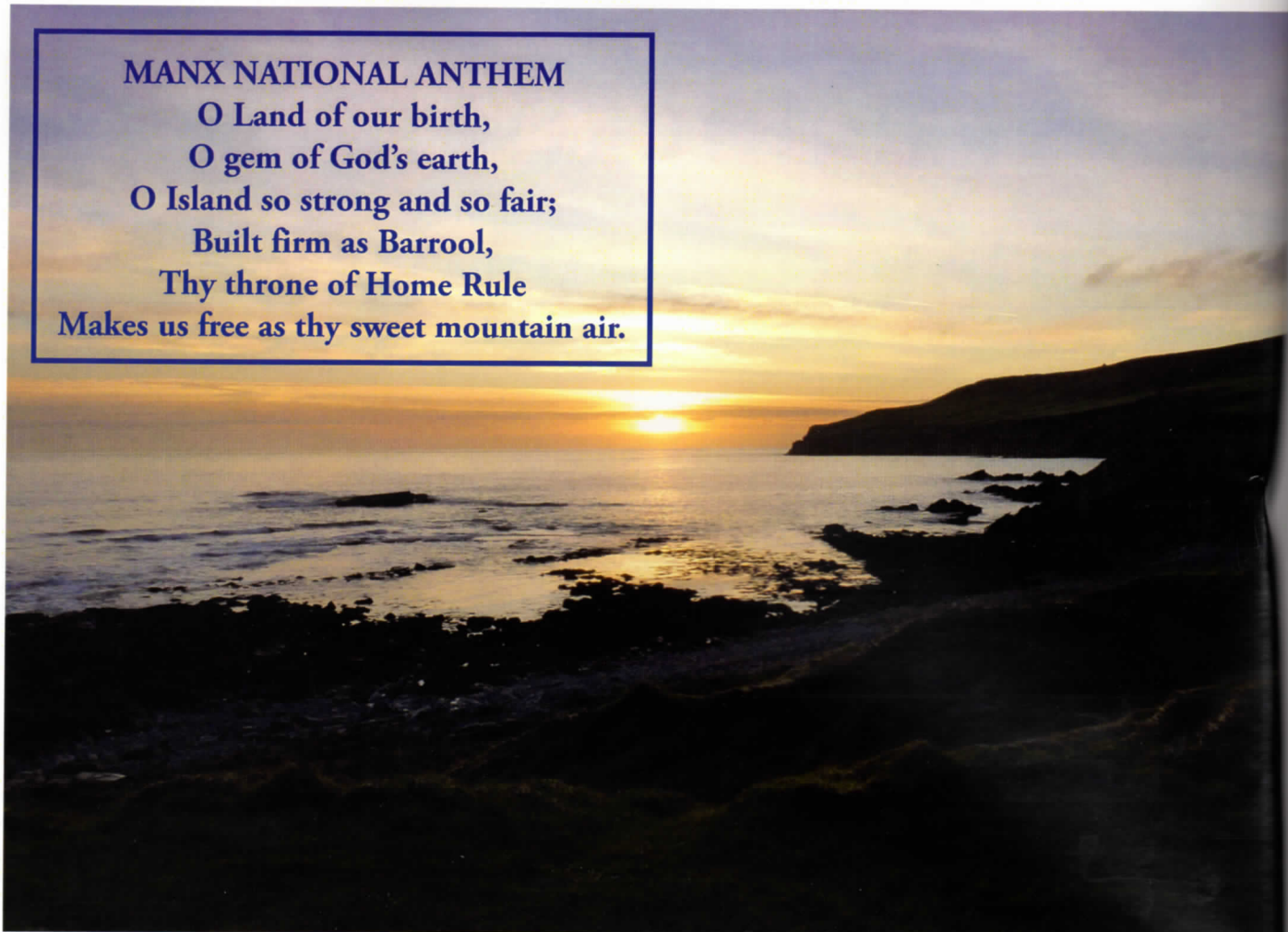
Empress Hotel, Central Promenade

Easter Monday 5th April
at 12noon for 12.30 pm

To Book Please Contact Vivienne Hague Tel: 674868

£18.95 including Buffet Lunch

MANX NATIONAL ANTHEM
O Land of our birth,
O gem of God's earth,
O Island so strong and so fair;
Built firm as Barrool,
Thy throne of Home Rule
Makes us free as thy sweet mountain air.



Caarjyn
Friends of the Easter Festival

This is a body under the auspices of the Manx Amateur Drama Federation. Their aims are to help and support the Festival, encourage audiences to attend the week of plays and to raise the profile and interest from new sponsors.

Information about the Festival and related events are sent to members by Newsletter.

If you would like to become a member, please provide details below.

Membership is open to everyone on or off the Island.

Name.....

Address.....

.....

.....

Postcode..... Telephone.....

Membership: £4.00 per annum. £30 Life Membership.

Please return this form to:

Vivienne Hague. 4 Cronkbourne Road, Douglas, Isle of Man. IM2 3LB.

Please make any cheques payable to Manx Amateur Drama Federation.

Cosneyderyn Roie yn Feailley Ain

Previous Festival Winners

- 1950** The Thirteen Players, Bristol
'Canaries Sometimes Sing'
- 1951** Phoenix Theatre Group, Dublin
'Michaelmas Eve'
- 1952** Phoenix Theatre Group, Dublin
'Lovers Meeting'
- 1953** Withington Players, Manchester
'The Tudor Wench'
- 1954** The Thirteen Players, Bristol
'Candlelight'
- 1955** The Thirteen Players, Bristol
'Frolic in April'
- 1956** Withington Players, Manchester
'The Gentle Arm'
- 1957** Theatre One, Edinburgh
'Dark of the Moon'
- 1958** Theatre One, Edinburgh
'Don't Listen Ladies'
- 1959** Theatre Arts Club, Edinburgh
'All My Sons'
- 1960** Theatre Arts Club, Edinburgh
'Diary of Anne Frank'
- 1961** Cairde Fail, Dublin
'Twilight of a Warrior'
- 1962** Rushen ADS, Isle of Man
'Ladies in Retirement'
- 1963** Tudor Players, Manchester
'Love and Lunacy'
- 1964** Withington Players, Manchester
'Billy Liar'
- 1965** Fylde Coast Players, St Annes
'The Rehearsal'
- 1966** No Competition
- 1967** Fylde Coast Players, St Annes
'Fallen Angels'
- 1968** Tudor Players, Manchester
'Castle of Deception'
- 1969** Litherland Dramatic Group
'Oedipus Rex'
- 1970** Green Room Players, Blackpool
'Spring and Port Wine'
- 1971** Legion Players, Isle of Man 'Angels in Love'
- 1972** Tudor Players, Manchester
'Relatively Speaking'
- 1973** Blackpool College Theatre Group 'Home'
- 1974** Formby Theatre Group 'Ghosts'
- 1975** Tudor Players, Manchester 'Plaza Suite'
- 1976** No Competition
- 1977** Tudor Players, Manchester 'The Price'
- 1978** Dilys Guite Players, Sheffield 'Blythe Spirit'
- 1979** Theatre One, Thornton 'Home'
- 1980** The Players, Cheadle Hulme 'Table Manners'
- 1981** Abbey Actors, Belfast 'Echoes'
- 1982** Group Theatre Company, London
'Rashomon'
- 1983** Theatre One, North Fylde 'Exit the King'
- 1984** Parkside Players 'Da'
- 1985** Tudor Players, Manchester 'Bedroom Farce'
- 1986** Tudor Players, Manchester 'Accrington Pals'
- 1987** Clarence Players, Belfast
'The Goodbye People'
- 1988** Martello Productions, Wicklow
'Children of a Lesser God'
- 1989** Group Theatre Company, London
'Hard Times'
- 1990** Martello Productions, Wicklow
'Agnes of God'
- 1991** Sedgefield Players, Co. Durham
'Stepping Out'
- 1992** Sedgefield Players, Co. Durham
'Woman in Mind'
- 1993** Group Theatre Company, London -
'September in the Rain'
- 1994** St. James' Players, Burnley
'Last Tango in Whitby'
- 1995** Sedgefield Players, Co. Durham
'Dancing at Lughnasa'
- 1996** Tryst Theatre, Falkirk 'Under Milk Wood'
- 1997** Brigstow Theatre Company
'Driving Miss Daisy'
- 1998** Tudor Players, Manchester 'Hindle Wakes'
- 1999** Tryst Theatre, Falkirk 'Cemetery Club'
- 2000** Tudor Players, Manchester
'The Curious Savage'
- 2001** Bovingdon Players. Bovingdon
'Abigail's Party'
- 2002** Everyman Productions, Sligo 'The Mai'
- 2003** In Yer Space, Blackpool
'A Night in November'
- 2004** Tudor Players, Manchester
'The Prisoner of Second Avenue'
- 2005** Tudor Players, Manchester 'Humble Boy'
- 2006** Cytringan Players, Kettering 'night Mother'
- 2007** Cytringan Players, Kettering 'Peggy for You'
- 2008** Everyman Productions, Sligo
'Juno and the Paycock'
- 2009** Bejou Productions, Essex
'Someone Who'll Watch Over Me'

Be Your Own Adjudicator!

See how well you can judge and forecast the Results. Use this page to record your own marks

Play	Acting (40)	Production (35)	Stage Presentation (15)	Dramatic Achievement (10)*	Penalty Points	TOTAL (100)
'Burn This'						
'Like a Virgin'						
'Dealer's Choice'						
'Twelfth Night'						
'Blackbird'						
'Neville's Island'						
'Unravelling the Ribbon'						

*Endeavour, Originality and Attainment

Eiyrtys Results

This page is for you to record the winners.

Breakdown of Marking: Acting 40 points; Production 35 points;
Stage Presentation 15 points; Originality, Effort & Attainment 10 points

Best Play - The F.M. Cubbon Trophy

.....
First Runner Up - The Dick Craine Cup

.....
Second Runner Up - The Jack Lynch Cup

.....
The Vanda Lambert Award Best Female Performance. (Replica Trophy Donated by Jean Webb)

.....
The June Edge Cup Most Promising Performance under 21

.....
The S.E Benn Award Best Male Performance. (Replica Trophy Donated by Mark Clift)

.....
The Mollie Corkill Award Best Female Performance in a Supporting Role

.....
The David Kennaugh Award Best Male Performance in a Supporting Role

.....
The Olga Gray Adjudicator's Award Outstanding Contribution

.....
The John Bryan Award For Audience Appreciation

.....
The Michael J. Lees Award For Drama. (Donated to mark the Golden Jubilee Festival Year)

.....
The Richard Harris Memorial Trophy For Ensemble Acting. (Donated by Group Theatre Company, London)

.....
The Jackie Banner Award For Comedy

.....
The J & B Green Award For Costume and Make - up

.....
The Raven Players Award Best Producer / Director

.....
The Frances Isaac Award Best Performance over the age of 60

For the Gaiety

Front of House

Operations Manager Brian Murray

Front of House Duty Managers

Neill Cowin and John Foster

Housekeeper Derek Hibbert

Ticket Office Villa Marina Reception
and Isle of Man Welcome Centre

Back Stage

Technical Manager Séamus Shea

Stage Manager Graham Bayliss

Theatre Technician Alex Davidson

Asst. Theatre Technician Carl Crellin

Asst. Stage Manager Ted Faragher

For MADF

Stage Manager

Brian Green

Stage Crew

Louisa Bawden

Helen Clarke

David Daugherty

Jenny Green

John & Joan Hayes

Chris Jackson

Ably Assisted by

representatives from

Albany Theatre Group

Friends of the Festival

Friends of the Gaiety

Legion Players

Rushen Players

Service Players

and

Members of the

Manx Amateur

Drama Federation

Emergency Evacuation Procedures

If you are asked to evacuate the building, please do so as quickly as possible and leave by the nearest exit to which you are directed by the Staff.

In the event of an emergency which by necessity requires that this Theatre be evacuated, you as a member of the audience are requested to co-operate by paying strict attention to any instructions, either by announcement from the stage, or given verbally by a member of Staff at this Theatre.

DO NOT PUSH OR RUSH

DO NOT turn back or stop to collect any personal belongings.

DO NOT re-enter the building for any reason unless told to do so.

DO NOT act in a manner that could cause obstruction to emergency services attending the building to deal with the emergency.

N.B.

- a) All gangways, passages and aisles shall be kept entirely free from chairs or any other obstruction.
- b) Persons shall not be permitted to stand in any gangway or aisle.
- c) The safety curtain shall at all times be maintained in working order and shall be lowered and raised during the time of the performance.

FOR YOUR OWN SAFETY

PLEASE OBSERVE THESE INSTRUCTIONS



*...helping
you move*

Tel 625888

for you?

COWLEYGROVES  COM



*...helping
you move*

Success!

Sold Subject to Contract

COWLEYGROVES  COM



Taylorian Productions proudly presents

OLIVER!



**August
9th–21st
2010**

**at the
Gaiety Theatre
Douglas**