



**Manx Amateur
Drama Federation**

**7th Annual
Festival of
One-Act Plays**

**Erin Arts Centre
February 25 & 26 2000**

Peter English
Adjudicator

Friday - 25th February

Branwell

(by Bettine Manktelow)

Legion Players

Sleep Tight Tonight

(by Michael Snelgrove)

Arbory Players

Shakespeare in Trouble

(by Paul Cripps)

Legion Players

Saturday - 26th February

Lone Star (*Contains strong language*)

(by James McLure)

Dramatis Personae

In by the Half

(by Jimmie Chinn)

Legion Players

Welcome & Thanks

The Manx Amateur Drama Federation would like to take this opportunity to thank



our adjudicator Peter English, the volunteers of The Erin Arts Centre and all the participating actors & stage crews.

We would especially like to thank those who have not only come to support the festival, but who have also been treated to a wonderful evenings entertainment. Without you neither this festival nor amateur theatre on the island would be possible.

Finally, to all the teams - **Break a Leg.**

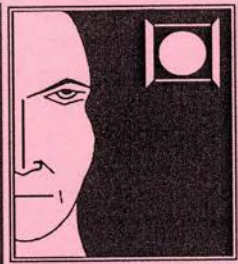
Awards to be Given

Best Play

Best Performance

Best Director

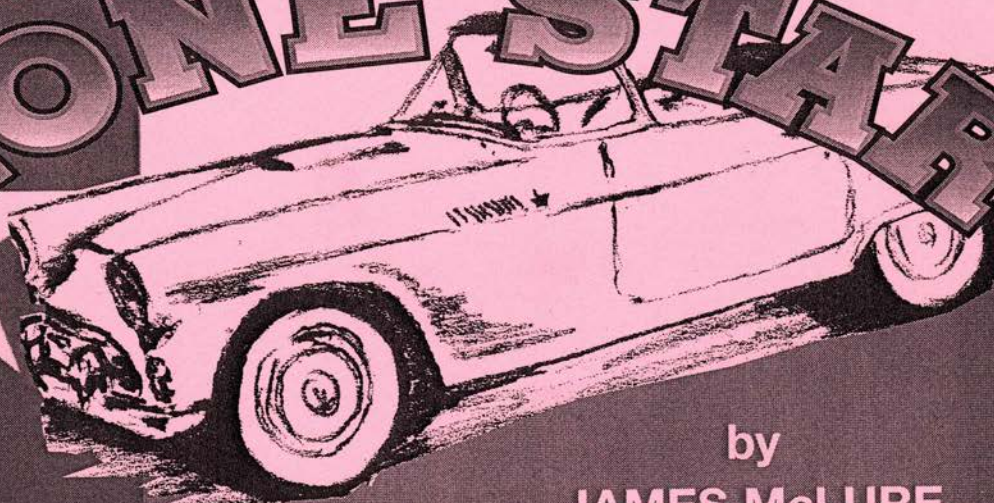
President's Cup
(Adjudicator's Award)



dramatis
PERSONAE

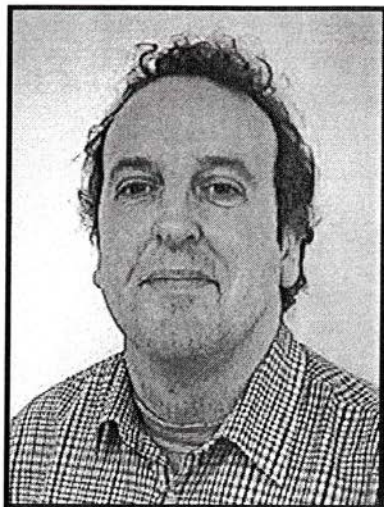
presents

LONE STAR



by
JAMES McLURE

Erin Arts Centre. Saturday, 26th February, 2000. 7.30 p.m.



The problems of post-war readjustment and resettlement have been addressed many times before in American drama, fiction, and the cinema, but surely never as comically as in James McLure's *Lone Star*. As in nearly all great comedy however, the humour is tinged with sadness and regret, and much of the comedy comes from the yawning gulf between hopes and dreams and the mundane reality of disappointment and failure.

The play is ostensibly about the effect of war on one man, Roy Caulder, one of the boys who made it home but whose own personal war still rages in his head. Roy's war has become his fight to hold on to his past and to resist change, he wants the world to be as it was, not as it is. There is I think a suspicion that this is Roy's way of dealing with the effects of Vietnam; if he can only return to the past then things will be alright. His inability to move on and his masculine pride only leads to delusion and frustration, an impotent rage seethes within him as he tries through ritual and re-enactment to recreate his 'triumphs' and former 'glory'. Roy's assistant and confidante in his drunken night games at the back of Angel's bar is his dumb brother Ray whose slow ways and seeming innocence hides a deep wisdom and understanding. Like 'The Fool' in *King Lear*, Ray is often the smartest one on stage.

The third member of Roy's 'Groundhog Day' world where (at least for Roy) time stands still, has become the focus of much of Roy's anger - Cleetis Fullernoy. Whilst it is because of what Cleetis represents that Roy hates him there is also the horrible possibility that Roy sees something of himself in Cleetis.

None of these characters are stock comic types, they are all three-dimensional and reveal new depths as the plot resolves itself. In addition the play represents more than just the comic predicament of three men under the stars. Roy stands for a whole generation who went off to war and came back to a world no longer theirs. It is about a changing society and a changing America where old certainties no longer seem to reassure. The play is also about the lies men tell themselves and how they learn to cope through forgiving and forgetting.

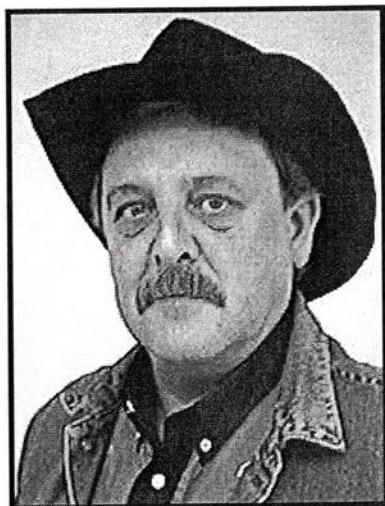
We hope you enjoy *Lone Star* as much as we have. My thanks to all the team onstage and off who have put so much work in to this play and who have put up with me for the last couple of months !

Phil Baird

Phil Baird

CAST IN ORDER OF APPEARANCE

(The action of the play takes place out back of 'Angel's Bar', late at night, sometime in 1978)



Roy Caulder

Played by Mark Clift

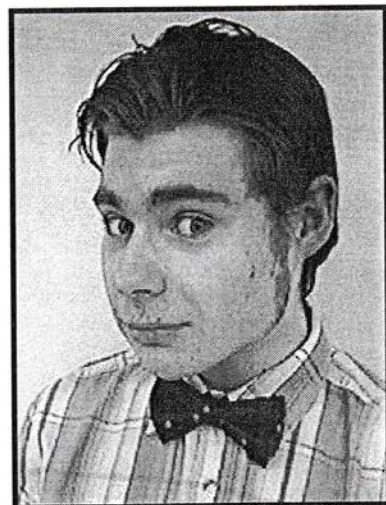
Tough, mean, belligerent and uneducated. 'Going to seed'. His army service has nearly given him a sense of irony. Nearly. He voted for Nixon, likes John Wayne movies and thinks Raquel Welch is a great actress.



Ray Caulder

Played by Michael Sorrell

Roy's younger brother. He is slope - shouldered, sloth like and slowwww. He has no idea what irony is. Wears a 'John Deere' hat. Probably sleeps in it.



Cletis "Skeeter" Fullernoy

Played by Cliff Chapman

A friend of Ray's. A wide eyed asshole. He married the first girl he dated that didn't spit on him. She married him because of his father's appliance store. He works there. Gets lost in the stock room. Has a plastic pocket pencil holder. Sleeps with it.

The cast categorically deny any similarity between themselves and their characters!

BACKSTAGE

Stage Manager, Lighting and Sound: Mike Percival.
Prompt & Shirtmaker extraordinaire: Aalin Cunningham.

ACKNOWLEDGEMENTS AND THANKS

Wright & Co. for their continuing Sponsorship and Support.

The Copy Shop for their Support.

Brian Keenan and All the Staff at The Empress Hotel.

Les Baird and All the Staff at The Mannin Hotel.

J.D. Faulkner Ltd., Peel for the 'John Deere' hat.

The Horse & Plough, IOM Business Park.

Paul Mihailovits for all his help backstage and with props.

And, for the loan of the American Licence Plates;

Chris Heginbotham, Port St. Mary.

Liz Popelier, Ramsey.

Myriam Bean, Castletown.

Martin Lockwood, Foxdale.

PREVIOUS DRAMATIS PERSONAE PRODUCTIONS

November 1997 - *The Normal Heart* by *Larry Kramer*
Directed by Michael J. Lees.
(The Mannin Hotel, Broadway, Douglas)

February 1998 - *One for the Road* by *Harold Pinter*
Directed by Mark Clift
(Erin Arts Centre as part of the One Act Play Festival.
Best Actor Award to Michael Sorrell)

February 1999 - *Hot Godly Wind* by *Charles Dyer*
Directed by Don Harris
(Erin Arts Centre as part of the One Act Play Festival.
Best Director Award; Don Harris. President's Trophy; Mark Clift and Don Harris for acting)

November 1999 - *The Long and The Short and The Tall* by *Willis Hall*
Directed by Colin Dolley G.O.D.A.
(The Mannin Hotel, Broadway, Douglas)

THE LEGION PLAYERS PRESENT

IN BY THE HALF



**A ONE ACT PLAY
BY
JIMMIE CHINN**

"ART, ESPECIALLY THE STAGE, IS AN AREA IN WHICH IT IS IMPOSSIBLE TO WALK WITHOUT STUMBLING. THERE ARE IN STORE FOR YOU... GREAT MISUNDERSTANDINGS AND DEEP DISAPPOINTMENTS. YOU MUST BE PREPARED FOR ALL THIS, ACCEPT IT AND NEVERTHELESS, STUBBORNLY, FANATICALLY, FOLLOW YOUR OWN WAY..."

ANTON CHEKOV

"THE SECRET OF ACTING IS MAKING THEM BELIEVE IT'S YOU..."

JACK NICHOLSON

IN BY THE HALF

A ONE ACT PLAY BY JIMMIE CHINN

SPECIAL THANKS

**THE OLD BONDED WAREHOUSE, 29 CASTLE STREET, PEEL
KRISTIAN ELSTROP, LOUISA BAWDEN AND PAUL STACEY**

THE GAIETY THEATRE

THE MANNIN HOTEL

SAMUEL FRENCH LIMITED

LEGION PLAYERS - FORTHCOMING EVENTS

ACTING WORKSHOP WITH DENNIS COOTE - 11/12 MARCH 2000

**'ROOKERY NOOK' BY BEN TRAVERS DIRECTED BY DENNIS COOTE - GAIETY THEATRE
JUNE 2000**

SETTING

**SCENE ONE - SATURDAY - 9.30 AM - THE SITTING ROOM OF MADAM'S TERRACED COTTAGE IN
HAMMERSMITH, WEST LONDON**

SCENE TWO - 1.00 PM - THE SAME DAY

CAST

(IN ORDER OF APPEARANCE)

MADAM

BETTY ARROWSMITH-DEANS

DORIS

EVE JENNINGS

DOCTOR

LINDA MANN

SYLVIA

GEMMA VARNOM

URSULA

CAROLINE TURNER

DIRECTED AND PRODUCED BY GEOFF KERMEEN

PRODUCTION TEAM

STAGE MANAGER AND LIGHTING

PHILIP THOMSON

BACKSTAGE

**CAMILLE CUTAJAR
KRISTIAN ELSTROP**

PROMPT

AMY HARRISON